

**Production Worksheet**

Wilcom EmbroideryStudio - Designing

**\*HALLOWEEN HAPPY 01 5X7\***

Design: **Halloween Happy 01 5x7**

Title:

Stitches: 15,247  
 Height: 91.9 mm  
 Width: 177.2 mm  
 Colors: 3  
 Colorway: Colorway 1  
 Zoom: 0.62

**z digitizing**  
 support@zdigitizing.com  
 +1 (213) 788-6748

Machine format: Tajima  
 Color changes: 7  
 Stops: 8  
 Trims: 19  
 Appliqués: 0  
 Left: 88.6 mm  
 Right: 88.6 mm  
 Up: 45.9 mm  
 Down: 45.9 mm  
 EndX: 0.0 mm  
 EndY: 0.0 mm  
 Area: 16276.7 mm<sup>2</sup>  
 Max stitch: 10.3 mm  
 Min stitch: 0.1 mm  
 Max jump: 7.2 mm  
 Total thread: 77.45m  
 Total bobbin: 27.35m

Stop Sequence:

#	N#	Color	St.	Code	Name	Chart
1.	1	█	4,207	1000	Black	Madeira Classic 40
2.	2	□	4,327	1003	White	Madeira Classic 40
3.	1	█	4,511	1000	Black	Madeira Classic 40
4.	2	□	4,549	1003	White	Madeira Classic 40
5.	1	█	8,219	1000	Black	Madeira Classic 40
6.	3	█	14,695	1372	Pumpkin Spice	Madeira Classic 40
7.	1	█	15,125	1000	Black	Madeira Classic 40
8.	2	□	15,245	1003	White	Madeira Classic 40



# Color Film

Wilcom EmbroideryStudio - Designing

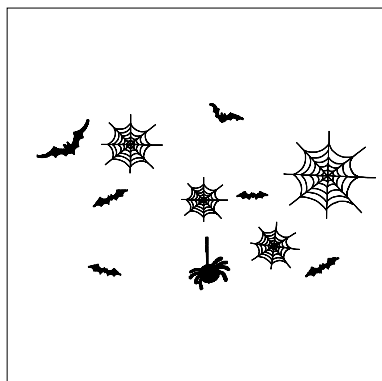
## \*HALLOWEEN HAPPY 01 5X7\*

Design: **Halloween Happy 01 5x7**

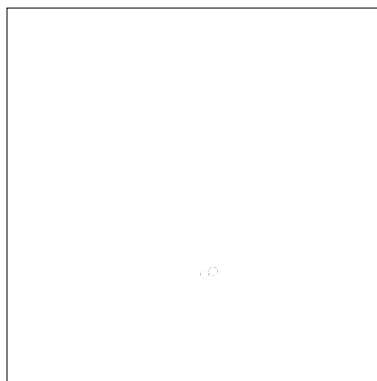
Title:

Stitches: 15,247  
Height: 91.9 mm  
Width: 177.2 mm  
Colors: 3  
Colorway: Colorway 1  
Zoom: 0.27

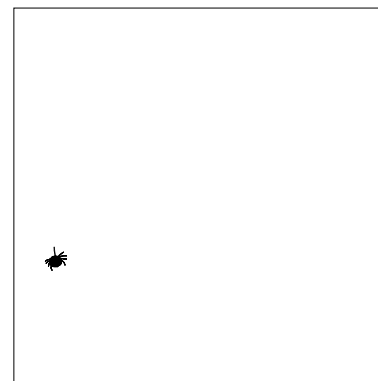
**z digitizing**  
support@zdigitizing.com  
+1 (213) 788-6748



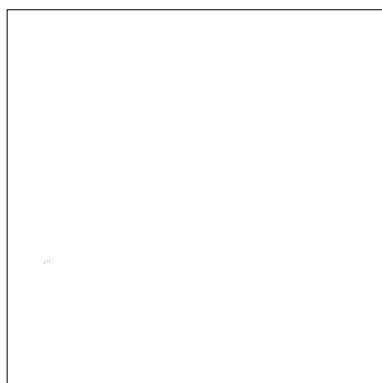
Stop #: 1  
Element:  
Code: 1000  
Name: Black  
Chart: Madeira Classic 40  
Stitches: 4,207  
Thread used: 17.43m



Stop #: 2  
Element:  
Code: 1003  
Name: White  
Chart: Madeira Classic 40  
Stitches: 120  
Thread used: 0.62m



Stop #: 3  
Element:  
Code: 1000  
Name: Black  
Chart: Madeira Classic 40  
Stitches: 184  
Thread used: 0.76m



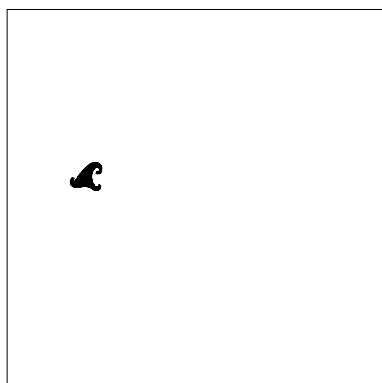
Stop #: 4  
Element:  
Code: 1003  
Name: White  
Chart: Madeira Classic 40  
Stitches: 38  
Thread used: 0.12m



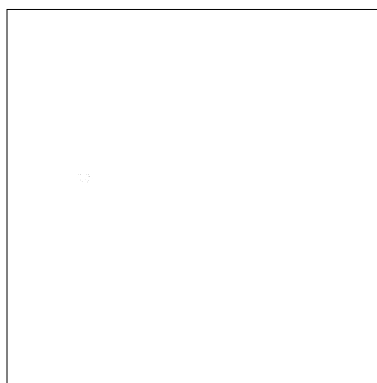
Stop #: 5  
Element:  
Code: 1000  
Name: Black  
Chart: Madeira Classic 40  
Stitches: 3,670  
Thread used: 17.41m



Stop #: 6  
Element:  
Code: 1372  
Name: Pumpkin Spice  
Chart: Madeira Classic 40  
Stitches: 6,476  
Thread used: 37.43m



Stop #: 7  
Element:  
Code: 1000  
Name: Black  
Chart: Madeira Classic 40  
Stitches: 430  
Thread used: 2.47m



Stop #: 8  
Element:  
Code: 1003  
Name: White  
Chart: Madeira Classic 40  
Stitches: 120  
Thread used: 0.42m