

Production Worksheet

Wilcom EmbroideryStudio - Designing

HAND 4X4

Design: Hand 4x4

Title:

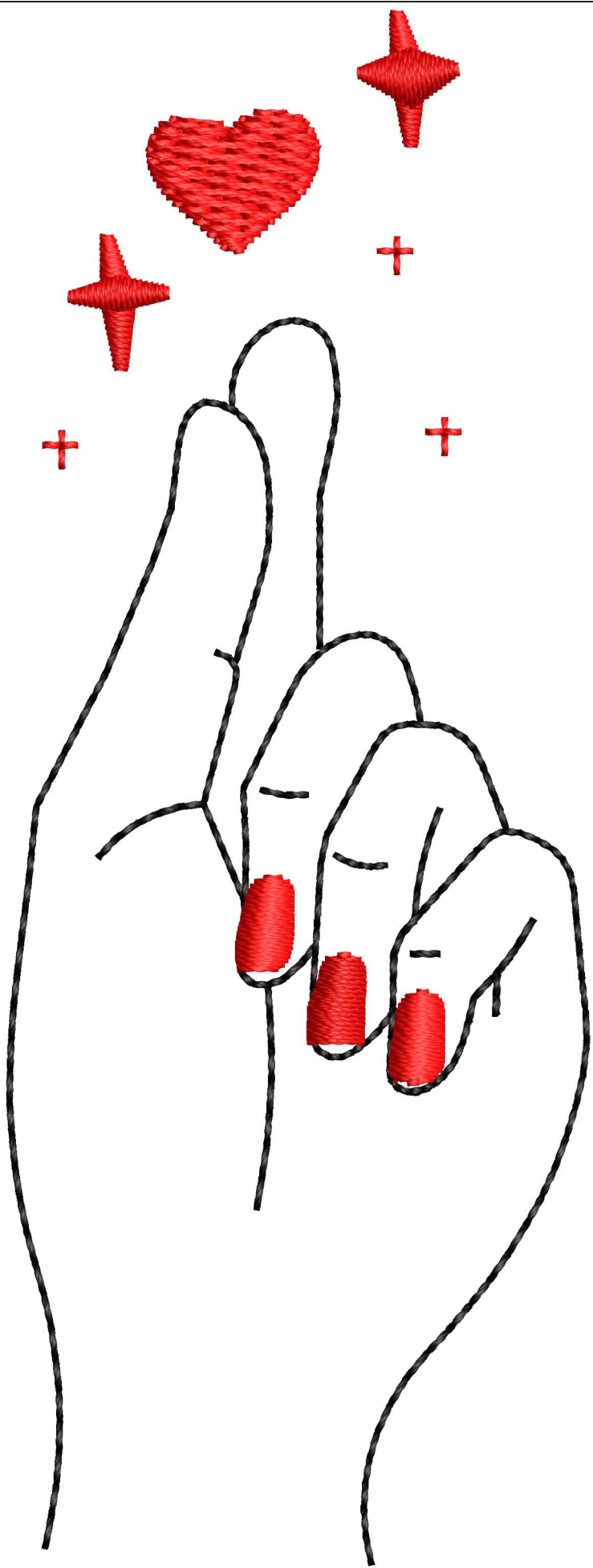
Stitches: 1,567
 Height: 95.0 mm
 Width: 35.3 mm
 Colors: 2
 Colorway: Colorway 1
 Zoom: 2.69

z digitizing
 support@zdigitizing.com
 +1 (213) 788-6748

Machine format: Tajima
 Color changes: 1
 Stops: 2
 Trims: 14
 Left: 17.7 mm
 Right: 17.7 mm
 Up: 47.5 mm
 Down: 47.5 mm
 EndX: 0.0 mm
 EndY: 0.0 mm
 Area: 3354.6 mm²
 Max stitch: 6.8 mm
 Min stitch: 0.2 mm
 Max jump: 6.8 mm

Stop Sequence:

#	N#	Color	St.	Code	Name	Chart
1.	2	█	818	1000	Black	Madeira Classic 40
2.	1	█	1,565	1146	Tomato Red	Madeira Classic 40



Color Film

Wilcom EmbroideryStudio - Designing

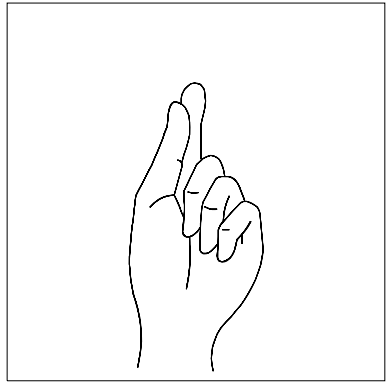
HAND 4X4

Design: **Hand 4x4**

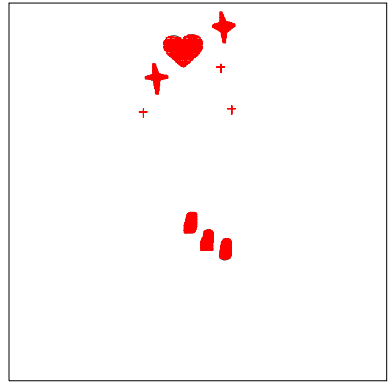
Title:

Stitches: 1,567
Height: 95.0 mm
Width: 35.3 mm
Colors: 2
Colorway: Colorway 1
Zoom: 0.50

z digitizing
support@zdigitizing.com
+1 (213) 788-6748



Stop #: 1
Element:
Code: 1000
Name: Black
Chart: Madeira Classic 40
Stitches: 818
Thread used: 3.27m



Stop #: 2
Element:
Code: 1146
Name: Tomato Red
Chart: Madeira Classic 40
Stitches: 747
Thread used: 3.38m