

Production Worksheet

Wilcom EmbroideryStudio - Designing

HAND 5X5

Design: **Hand 5x5**

Title:

Stitches: 2,043
Height: 127.0 mm
Width: 47.2 mm
Colors: 2
Colorway: Colorway 1
Zoom: 2.01

z digitizing
support@zdigitizing.com
+1 (213) 788-6748

Machine format: Tajima
Color changes: 1
Stops: 2
Trims: 17
Left: 23.6 mm
Right: 23.6 mm
Up: 63.5 mm
Down: 63.5 mm
EndX: 0.0 mm
EndY: 0.0 mm
Area: 5997.5 mm²
Max stitch: 7.1 mm
Min stitch: 0.2 mm
Max jump: 6.8 mm

Stop Sequence:

#	N#	Color	St.	Code	Name	Chart
1.	2	█	1,033	1000	Black	Madeira Classic 40
2.	1	█	2,041	1146	Tomato Red	Madeira Classic 40



Color Film

Wilcom EmbroideryStudio - Designing

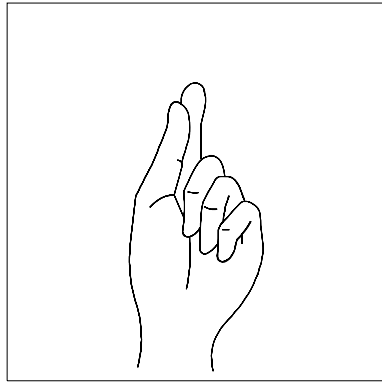
HAND 5X5

Design: **Hand 5x5**

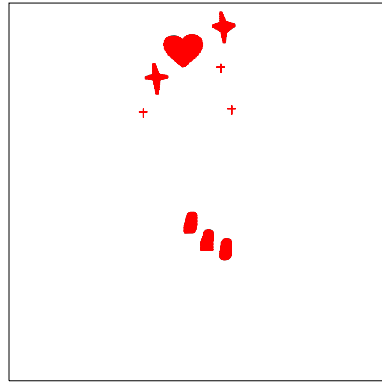
Title:

Stitches: 2,043
Height: 127.0 mm
Width: 47.2 mm
Colors: 2
Colorway: Colorway 1
Zoom: 0.37

z digitizing
support@zdigitizing.com
+1 (213) 788-6748



Stop #: 1
Element:
Code: 1000
Name: Black
Chart: Madeira Classic 40
Stitches: 1,033
Thread used: 4.23m



Stop #: 2
Element:
Code: 1146
Name: Tomato Red
Chart: Madeira Classic 40
Stitches: 1,008
Thread used: 5.14m