

# Production Worksheet

Wilcom EmbroideryStudio - Designing

## \*BUTTERFLY 5X5\*

Design: **Butterfly 5x5**


Title:

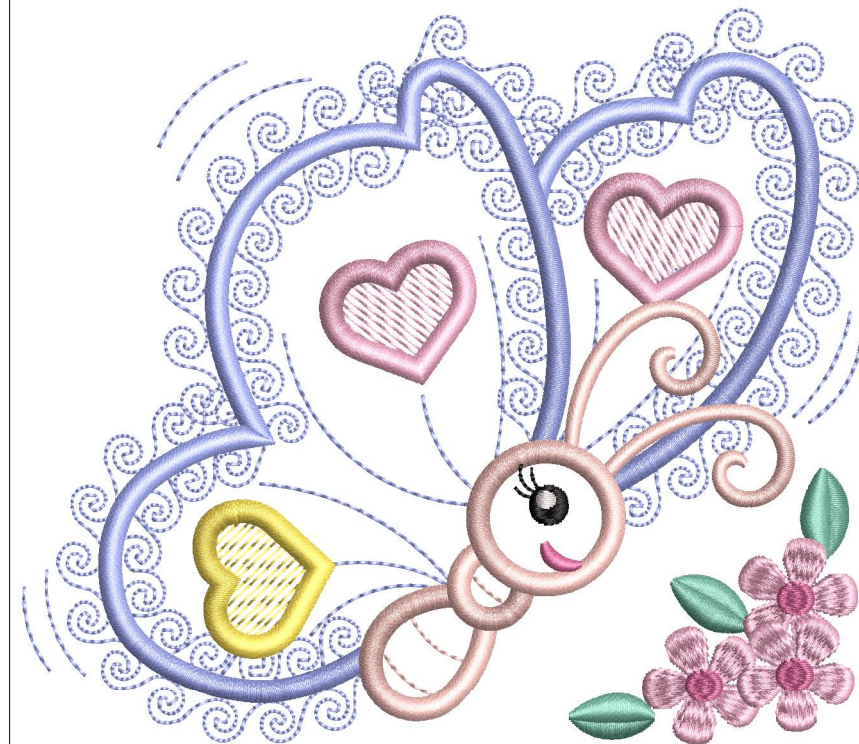
Stitches: 18,930  
Height: 111.6 mm  
Width: 127.0 mm  
Colors: 8  
Colorway: Colorway 1  
Zoom: 0.87

**z digitizing**  
support@zdigitizing.com  
+1 (213) 788-6748

Machine format: Tajima  
Color changes: 9  
Stops: 10  
Trims: 29  
Left: 63.5 mm  
Right: 63.5 mm  
Up: 55.8 mm  
Down: 55.8 mm  
EndX: 0.0 mm  
EndY: 0.0 mm  
Area: 14172.0 mm<sup>2</sup>  
Max stitch: 9.1 mm  
Min stitch: 0.3 mm  
Max jump: 7.2 mm

### Stop Sequence:

#	N#	Color	St.	Code	Name	Chart
1.	6		11,800	1075	Baby Blue	Madeira Classic 40
2.	4		13,061	1121	Candy Heart	Madeira Classic 40
3.	1		13,678	1023	Lemon	Madeira Classic 40
4.	5		15,723	1114	Pink Petal	Madeira Classic 40
5.	2		15,780	1309	Dahlia	Madeira Classic 40
6.	7		15,926	1000	Black	Madeira Classic 40
7.	8		15,954	1003	White	Madeira Classic 40
8.	3		16,764	1046	Eucalyptus	Madeira Classic 40
9.	4		18,605	1121	Candy Heart	Madeira Classic 40
10.	2		18,928	1309	Dahlia	Madeira Classic 40



# Color Film

Wilcom EmbroideryStudio - Designing

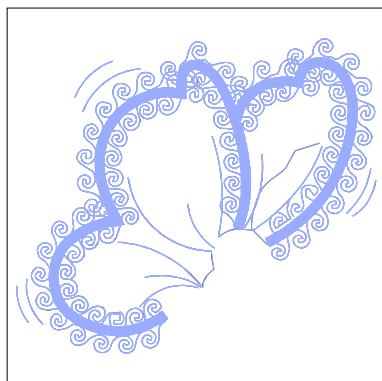
## \*BUTTERFLY 5X5\*

Design: **Butterfly 5x5**

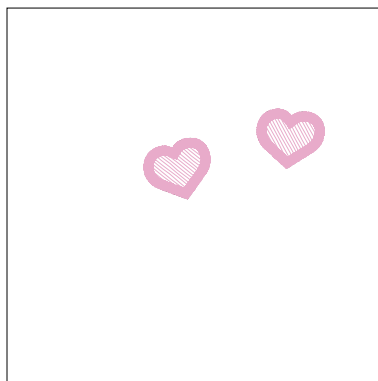
Title:

Stitches: 18,930  
Height: 111.6 mm  
Width: 127.0 mm  
Colors: 8  
Colorway: Colorway 1  
Zoom: 0.37

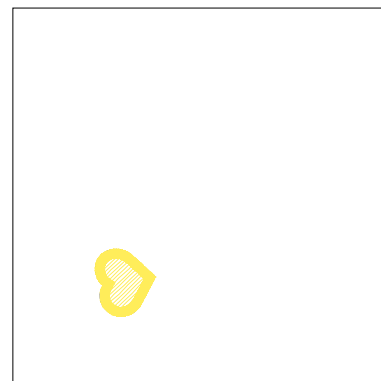
 **digitizing**  
support@zdigitizing.com  
+1 (213) 788-6748



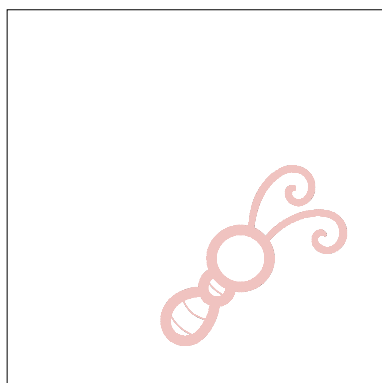
Stop #: 1  
Element:  
Code: 1075  
Name: Baby Blue  
Chart: Madeira Classic 40  
Stitches: 11,800  
Thread used: 48.72m



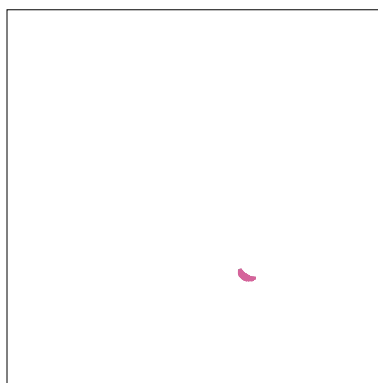
Stop #: 2  
Element:  
Code: 1121  
Name: Candy Heart  
Chart: Madeira Classic 40  
Stitches: 1,261  
Thread used: 8.18m



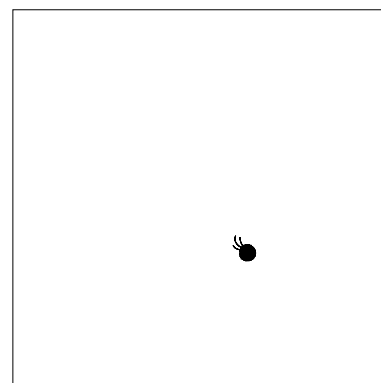
Stop #: 3  
Element:  
Code: 1023  
Name: Lemon  
Chart: Madeira Classic 40  
Stitches: 617  
Thread used: 4.05m



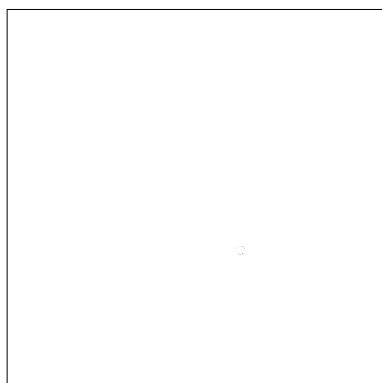
Stop #: 4  
Element:  
Code: 1114  
Name: Pink Petal  
Chart: Madeira Classic 40  
Stitches: 2,045  
Thread used: 12.16m



Stop #: 5  
Element:  
Code: 1309  
Name: Dahlia  
Chart: Madeira Classic 40  
Stitches: 57  
Thread used: 0.26m



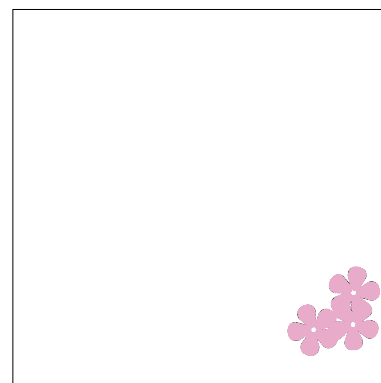
Stop #: 6  
Element:  
Code: 1000  
Name: Black  
Chart: Madeira Classic 40  
Stitches: 146  
Thread used: 0.71m



Stop #: 7  
Element:  
Code: 1003  
Name: White  
Chart: Madeira Classic 40  
Stitches: 28  
Thread used: 0.12m



Stop #: 8  
Element:  
Code: 1046  
Name: Eucalyptus  
Chart: Madeira Classic 40  
Stitches: 810  
Thread used: 4.79m



Stop #: 9  
Element:  
Code: 1121  
Name: Candy Heart  
Chart: Madeira Classic 40  
Stitches: 1,841  
Thread used: 10.68m

**Color Film**

Wilcom EmbroideryStudio - Designing

**\*BUTTERFLY 5X5\***

Design: **Butterfly 5x5**

Title:

Stitches: 18,930  
Height: 111.6 mm  
Width: 127.0 mm  
Colors: 8  
Colorway: Colorway 1  
Zoom: 0.37

  
support@zdigitizing.com  
+1 (213) 788-6748



Stop #: 10  
Element:  
Code: 1309  
Name: Dahlia  
Chart: Madeira Classic 40  
Stitches: 323  
Thread used: 1.46m