

Production Worksheet

Wilcom EmbroideryStudio - Designing

GIRL A 3X3

Design: **Girl A 3x3**


Title:

Stitches: 9,295
Height: 76.6 mm
Width: 51.1 mm
Colors: 5
Colorway: Colorway 1
Zoom: 2.23

z digitizing
support@zdigitizing.com
+1 (213) 788-6748

Machine format: Tajima
Color changes: 5
Stops: 6
Trims: 8
Left: 25.5 mm
Right: 25.5 mm
Up: 38.3 mm
Down: 38.3 mm
EndX: 0.0 mm
EndY: 0.0 mm
Area: 3910.1 mm²
Max stitch: 6.6 mm
Min stitch: 0.1 mm
Max jump: 6.6 mm

Stop Sequence:

#	N#	Color	St.	Code	Name	Chart
1.	5		3,010	1173	Autumn Gold	Madeira Classic 40
2.	4		3,218	1481		Madeira Classic 40
3.	3		4,849	1000	Black	Madeira Classic 40
4.	2		5,241	1180	Daffodil	Madeira Classic 40
5.	1		7,627	1137	Citrus Burst	Madeira Classic 40
6.	3		9,293	1000	Black	Madeira Classic 40



Color Film

Wilcom EmbroideryStudio - Designing

GIRL A 3X3

Design: **Girl A 3x3**

Title:

Stitches: 9,295

Height: 76.6 mm

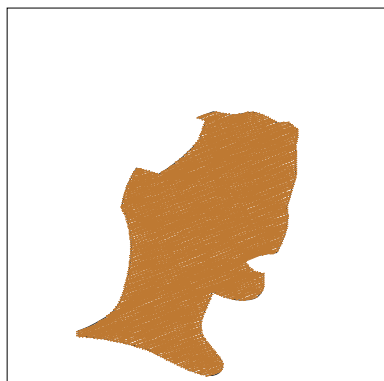
Width: 51.1 mm

Colors: 5

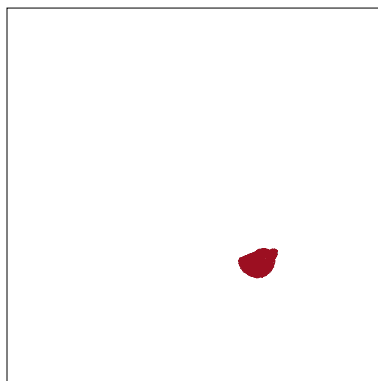
Colorway: Colorway 1

Zoom: 0.62

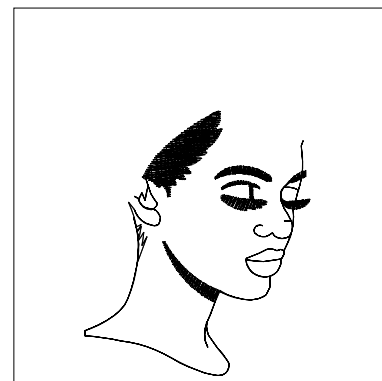
z digitizing
support@zdigitizing.com
+1 (213) 788-6748



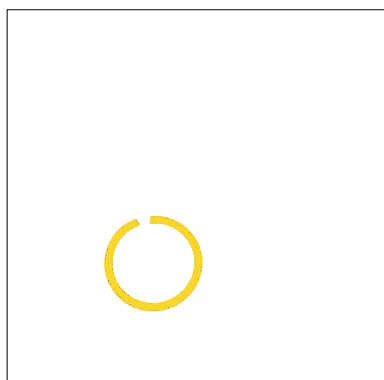
Stop #: 1
Element:
Code: 1173
Name: Autumn Gold
Chart: Madeira Classic 40
Stitches: 3,010
Thread used: 19.45m



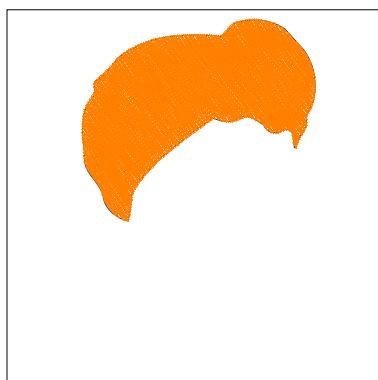
Stop #: 2
Element:
Code: 1481
Name:
Chart: Madeira Classic 40
Stitches: 208
Thread used: 1.05m



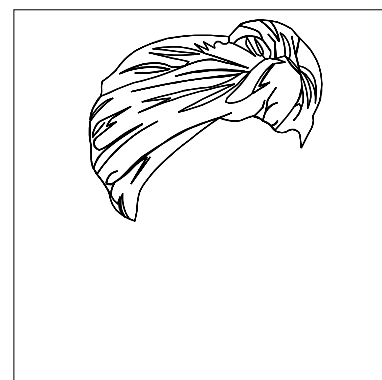
Stop #: 3
Element:
Code: 1000
Name: Black
Chart: Madeira Classic 40
Stitches: 1,631
Thread used: 6.44m



Stop #: 4
Element:
Code: 1180
Name: Daffodil
Chart: Madeira Classic 40
Stitches: 392
Thread used: 1.69m



Stop #: 5
Element:
Code: 1137
Name: Citrus Burst
Chart: Madeira Classic 40
Stitches: 2,386
Thread used: 15.41m



Stop #: 6
Element:
Code: 1000
Name: Black
Chart: Madeira Classic 40
Stitches: 1,666
Thread used: 6.71m