

Production Worksheet

Wilcom EmbroideryStudio - Designing

GIRL A 4X4

Design: **Girl A 4x4**

Title:

Stitches: 12,694
Height: 95.4 mm
Width: 63.5 mm
Colors: 5
Colorway: Colorway 1
Zoom: 1.76

z digitizing
support@zdigitizing.com
+1 (213) 788-6748

Machine format: Tajima
Color changes: 5
Stops: 6
Trims: 8
Left: 31.8 mm
Right: 31.8 mm
Up: 47.7 mm
Down: 47.7 mm
EndX: 0.0 mm
EndY: 0.0 mm
Area: 6059.7 mm²
Max stitch: 7.5 mm
Min stitch: 0.1 mm
Max jump: 6.8 mm

Stop Sequence:

#	N#	Color	St.	Code	Name	Chart
1.	5		4,440	1173	Autumn Gold	Madeira Classic 40
2.	4		4,690	1481		Madeira Classic 40
3.	3		6,712	1000	Black	Madeira Classic 40
4.	2		7,194	1180	Daffodil	Madeira Classic 40
5.	1		10,727	1137	Citrus Burst	Madeira Classic 40
6.	3		12,692	1000	Black	Madeira Classic 40



Color Film

Wilcom EmbroideryStudio - Designing

GIRL A 4X4

Design: **Girl A 4x4**

Title:

Stitches: 12,694

Height: 95.4 mm

Width: 63.5 mm

Colors: 5

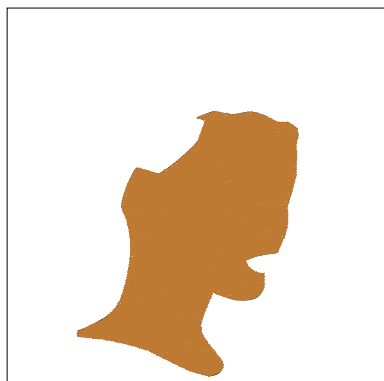
Colorway: Colorway 1

Zoom: 0.50

 **digitizing**

support@zdigitizing.com

+1 (213) 788-6748



Stop #: 1

Element:

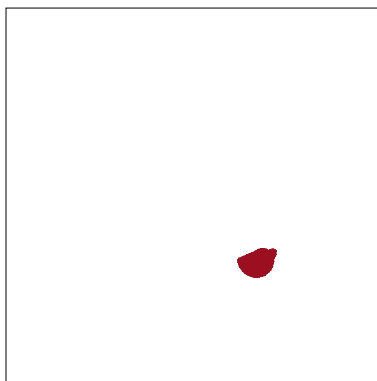
Code: 1173

Name: Autumn Gold

Chart: Madeira Classic 40

Stitches: 4,440

Thread used: 29.51m



Stop #: 2

Element:

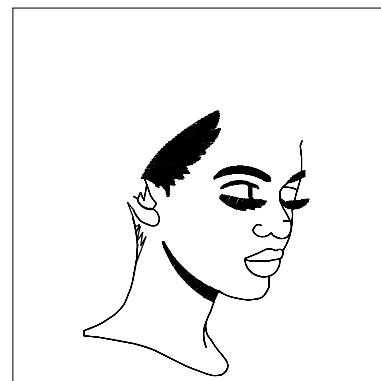
Code: 1481

Name:

Chart: Madeira Classic 40

Stitches: 250

Thread used: 1.44m



Stop #: 3

Element:

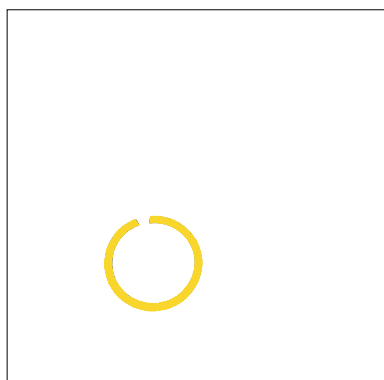
Code: 1000

Name: Black

Chart: Madeira Classic 40

Stitches: 2,022

Thread used: 8.51m



Stop #: 4

Element:

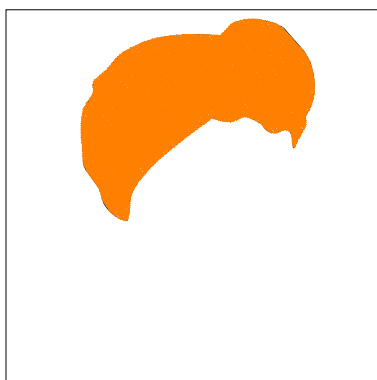
Code: 1180

Name: Daffodil

Chart: Madeira Classic 40

Stitches: 482

Thread used: 2.30m



Stop #: 5

Element:

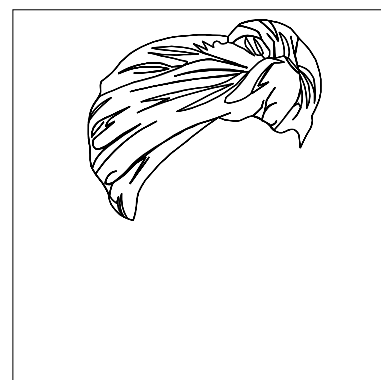
Code: 1137

Name: Citrus Burst

Chart: Madeira Classic 40

Stitches: 3,533

Thread used: 23.32m



Stop #: 6

Element:

Code: 1000

Name: Black

Chart: Madeira Classic 40

Stitches: 1,965

Thread used: 8.14m