

Production Worksheet

Wilcom EmbroideryStudio - Designing

GIRL C 5X7

Design: **Girl C 5x7**

Title:

Stitches: 36,819
 Height: 169.8 mm
 Width: 128.0 mm
 Colors: 7
 Colorway: Colorway 1
 Zoom: 0.88

z digitizing
 support@zdigitizing.com
 +1 (213) 788-6748

Machine format: Tajima
 Color changes: 18
 Stops: 19
 Trims: 28
 Left: 64.0 mm
 Right: 64.0 mm
 Up: 84.9 mm
 Down: 84.9 mm
 EndX: 0.0 mm
 EndY: 0.0 mm
 Area: 21735.1 mm²
 Max stitch: 10.7 mm
 Min stitch: 0.2 mm
 Max jump: 7.0 mm

Stop Sequence:

#	N#	Color	St.	Code	Name	Chart
1.	3	Carrot	4,699	1178	Carrot	Madeira Classic 40
2.	6	Black	5,896	1000	Black	Madeira Classic 40
3.	5	Lavender	6,478	1232	Lavender	Madeira Classic 40
4.	1	Vanilla Pudding	7,945	1061	Vanilla Pudding	Madeira Classic 40
5.	2	1450	10,708			Madeira Classic 40
6.	7	White	10,908	1003	White	Madeira Classic 40
7.	3	Carrot	11,083	1178	Carrot	Madeira Classic 40
8.	6	Black	13,570	1000	Black	Madeira Classic 40
9.	4	1422	15,529			Madeira Classic 40
10.	5	Lavender	15,921	1232	Lavender	Madeira Classic 40
11.	1	Vanilla Pudding	16,386	1061	Vanilla Pudding	Madeira Classic 40
12.	6	Black	17,717	1000	Black	Madeira Classic 40
13.	4	1422	24,528			Madeira Classic 40
14.	5	Lavender	25,007	1232	Lavender	Madeira Classic 40
15.	1	Vanilla Pudding	25,508	1061	Vanilla Pudding	Madeira Classic 40
16.	6	Black	29,963	1000	Black	Madeira Classic 40
17.	4	1422	32,708			Madeira Classic 40
18.	5	Lavender	34,857	1232	Lavender	Madeira Classic 40
19.	6	Black	36,817	1000	Black	Madeira Classic 40



Color Film

Wilcom EmbroideryStudio - Designing

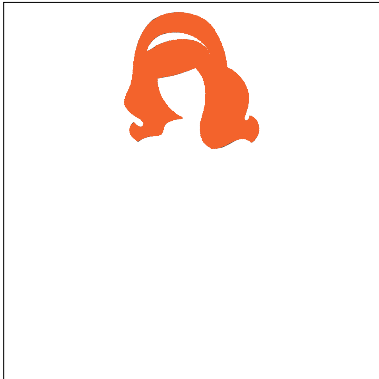
GIRL C 5X7

Design: **Girl C 5x7**

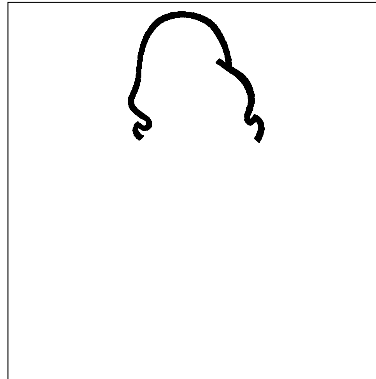
Title:

Stitches: 36,819
Height: 169.8 mm
Width: 128.0 mm
Colors: 7
Colorway: Colorway 1
Zoom: 0.28

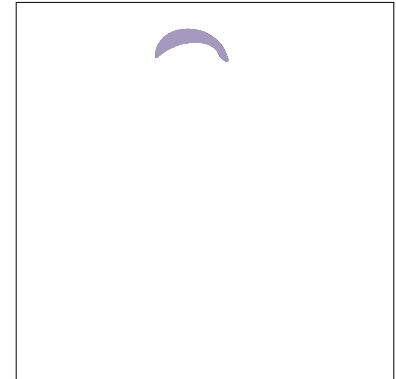

support@zdigitizing.com
+1 (213) 788-6748



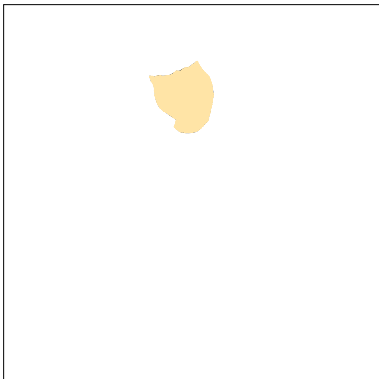
Stop #: 1
Element:
Code: 1178
Name: Carrot
Chart: Madeira Classic 40
Stitches: 4,699
Thread used: 29.46m



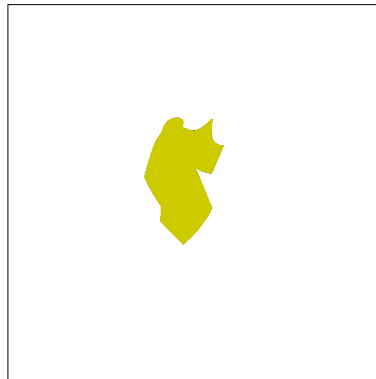
Stop #: 2
Element:
Code: 1000
Name: Black
Chart: Madeira Classic 40
Stitches: 1,197
Thread used: 6.66m



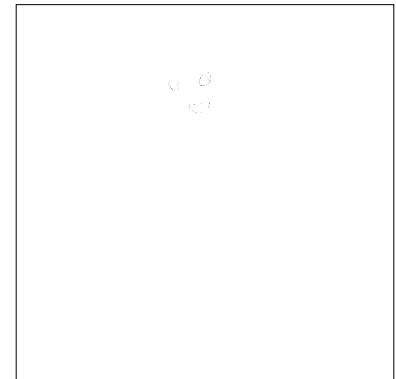
Stop #: 3
Element:
Code: 1232
Name: Lavender
Chart: Madeira Classic 40
Stitches: 582
Thread used: 3.17m



Stop #: 4
Element:
Code: 1061
Name: Vanilla Pudding
Chart: Madeira Classic 40
Stitches: 1,467
Thread used: 9.28m



Stop #: 5
Element:
Code: 1450
Name:
Chart: Madeira Classic 40
Stitches: 2,763
Thread used: 17.91m



Stop #: 6
Element:
Code: 1003
Name: White
Chart: Madeira Classic 40
Stitches: 200
Thread used: 0.98m

Color Film

Wilcom EmbroideryStudio - Designing

GIRL C 5X7

Design: **Girl C 5x7**

Title:

Stitches: 36,819

Height: 169.8 mm

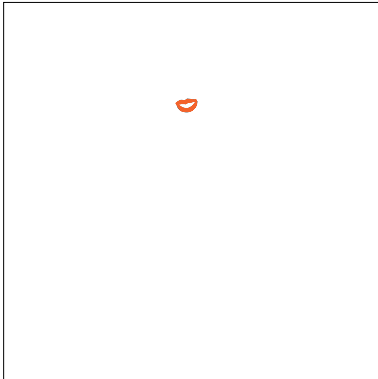
Width: 128.0 mm

Colors: 7

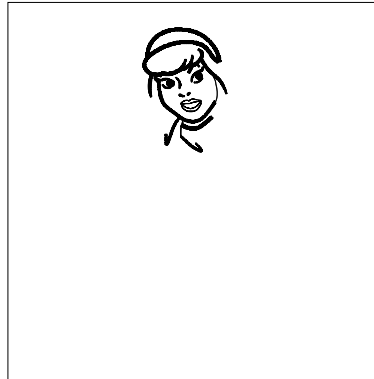
Colorway: Colorway 1

Zoom: 0.28

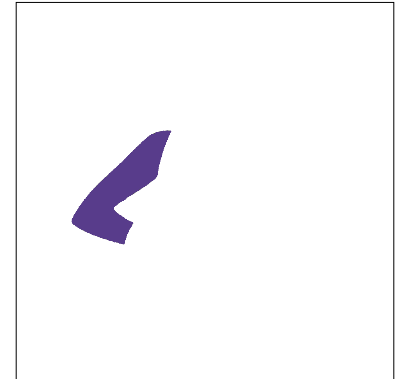
z digitizing
support@zdigitizing.com
+1 (213) 788-6748



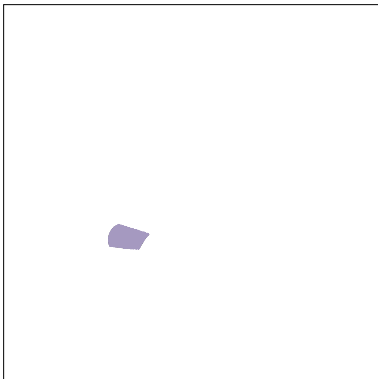
Stop #: 7
Element:
Code: 1178
Name: Carrot
Chart: Madeira Classic 40
Stitches: 175
Thread used: 0.69m



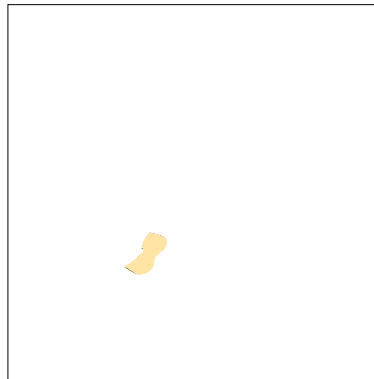
Stop #: 8
Element:
Code: 1000
Name: Black
Chart: Madeira Classic 40
Stitches: 2,487
Thread used: 10.07m



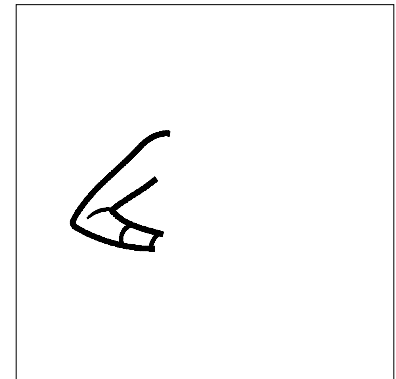
Stop #: 9
Element:
Code: 1422
Name:
Chart: Madeira Classic 40
Stitches: 1,959
Thread used: 12.56m



Stop #: 10
Element:
Code: 1232
Name: Lavender
Chart: Madeira Classic 40
Stitches: 392
Thread used: 2.23m



Stop #: 11
Element:
Code: 1061
Name: Vanilla Pudding
Chart: Madeira Classic 40
Stitches: 465
Thread used: 2.56m



Stop #: 12
Element:
Code: 1000
Name: Black
Chart: Madeira Classic 40
Stitches: 1,331
Thread used: 6.85m

Color Film

Wilcom EmbroideryStudio - Designing

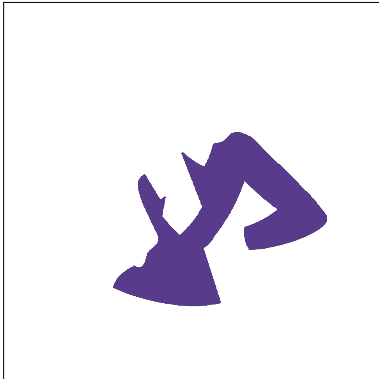
GIRL C 5X7

Design: **Girl C 5x7**

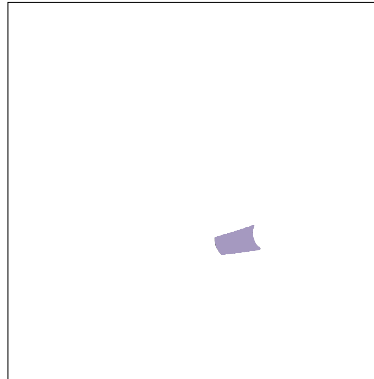
Title:

Stitches: 36,819
Height: 169.8 mm
Width: 128.0 mm
Colors: 7
Colorway: Colorway 1
Zoom: 0.28

z digitizing
support@zdigitizing.com
+1 (213) 788-6748



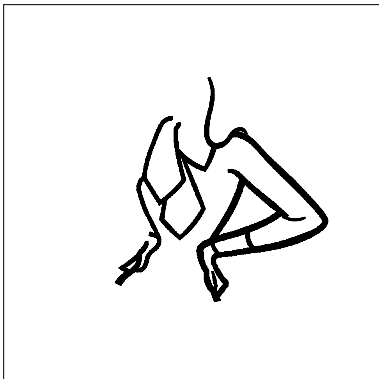
Stop #: 13
Element:
Code: 1422
Name:
Chart: Madeira Classic 40
Stitches: 6,811
Thread used: 44.05m



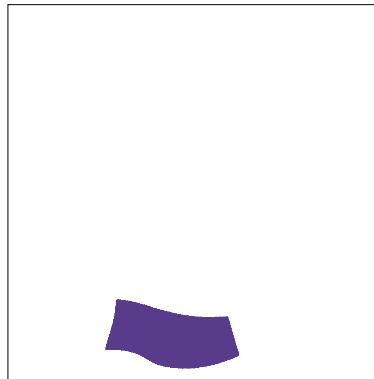
Stop #: 14
Element:
Code: 1232
Name: Lavender
Chart: Madeira Classic 40
Stitches: 479
Thread used: 2.68m



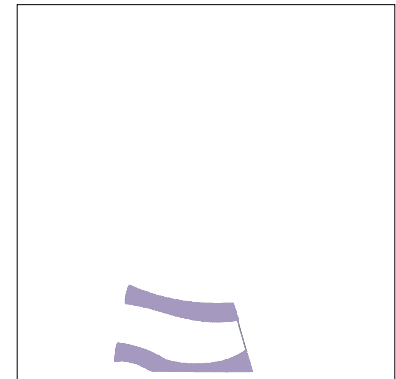
Stop #: 15
Element:
Code: 1061
Name: Vanilla Pudding
Chart: Madeira Classic 40
Stitches: 501
Thread used: 2.60m



Stop #: 16
Element:
Code: 1000
Name: Black
Chart: Madeira Classic 40
Stitches: 4,455
Thread used: 22.27m



Stop #: 17
Element:
Code: 1422
Name:
Chart: Madeira Classic 40
Stitches: 2,745
Thread used: 18.01m



Stop #: 18
Element:
Code: 1232
Name: Lavender
Chart: Madeira Classic 40
Stitches: 2,149
Thread used: 11.91m

Color Film

Wilcom EmbroideryStudio - Designing

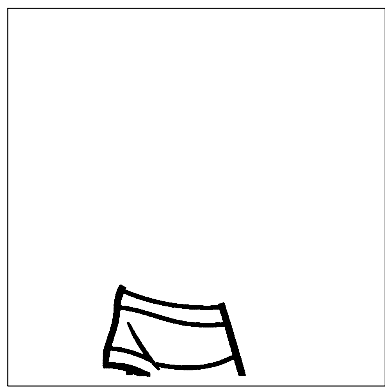
GIRL C 5X7

Design: **Girl C 5x7**

Title:

Stitches: 36,819
Height: 169.8 mm
Width: 128.0 mm
Colors: 7
Colorway: Colorway 1
Zoom: 0.28

z digitizing
support@zdigitizing.com
+1 (213) 788-6748



Stop #: 19
Element:
Code: 1000
Name: Black
Chart: Madeira Classic 40
Stitches: 1,960
Thread used: 9.75m