

Production Worksheet

Wilcom EmbroideryStudio - Designing

\*GIRL HEAD A 5X5\*

Design: Girl Head A 5x5

Title:


Stitches: 16,627  
Height: 127.5 mm  
Width: 94.9 mm  
Colors: 1  
Colorway: Colorway 1  
Zoom: 1.28

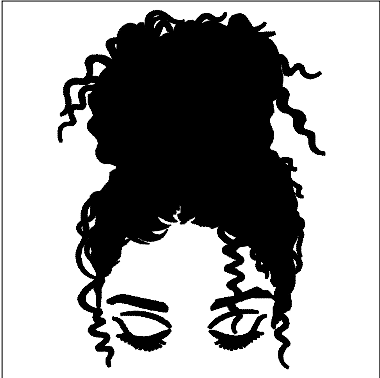
**z digitizing**  
support@zdigitizing.com  
+1 (213) 788-6748



Machine format: Tajima  
Color changes: 0  
Stops: 1  
Trims: 5  
Left: 47.5 mm  
Right: 47.5 mm  
Up: 63.7 mm  
Down: 63.7 mm  
EndX: 0.0 mm  
EndY: 0.0 mm  
Area: 12104.0 mm<sup>2</sup>  
Max stitch: 6.9 mm  
Min stitch: 0.2 mm  
Max jump: 7.0 mm

Stop Sequence:

#	N#	Color	St.	Code	Name	Chart
1.	1		16,625	1000	Black	Madeira Classic 40



Stop #: 1  
Element:  
Code: 1000  
Name: Black  
Chart: Madeira Classic 40  
Stitches: 16,625  
Thread used: 98.65m