

# Production Worksheet

Wilcom EmbroideryStudio - Designing

## \*GIRL HEAD F 5X5\*

Design: **Girl Head F 5x5**

Title:

Stitches: 23,072

Height: 127.0 mm

Width: 84.7 mm

Colors: 5

Colorway: Colorway 1

Zoom: 1.29

**z digitizing**  
support@zdigitizing.com  
+1 (213) 788-6748

Machine format: Tajima

Color changes: 4

Stops: 5

Trims: 15

Left: 42.3 mm

Right: 42.3 mm

Up: 63.5 mm

Down: 63.5 mm

EndX: 0.0 mm

EndY: 0.0 mm

Area 10754.3 mm<sup>2</sup>

Max stitch: 11.7 mm

Min stitch: 0.0 mm

Max jump: 6.8 mm

Stop Sequence:

#	N#	Color	St.	Code	Name	Chart
1.	3		11,217	1057	Caramel	Madeira Classic 40
2.	4		21,092	1000	Black	Madeira Classic 40
3.	1		21,584	1372	Pumpkin Spice	Madeira Classic 40
4.	5		21,771	1003	White	Madeira Classic 40
5.	2		23,070	1385	Garnet	Madeira Classic 40



# Color Film

Wilcom EmbroideryStudio - Designing

## \*GIRL HEAD F 5X5\*

Design: **Girl Head F 5x5**

Title:

Stitches: 23,072

Height: 127.0 mm

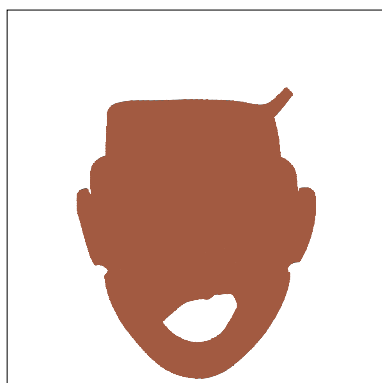
Width: 84.7 mm

Colors: 5

Colorway: Colorway 1

Zoom: 0.37

 **digitizing**  
support@zdigitizing.com  
+1 (213) 788-6748



Stop #: 1

Element:

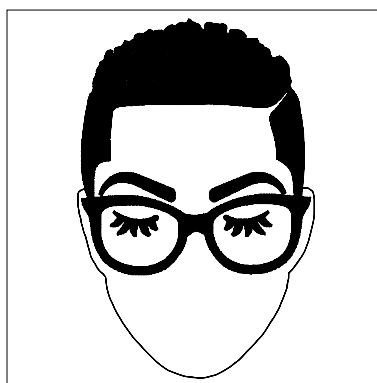
Code: 1057

Name: Caramel

Chart: Madeira Classic 40

Stitches: 11,217

Thread used: 77.37m



Stop #: 2

Element:

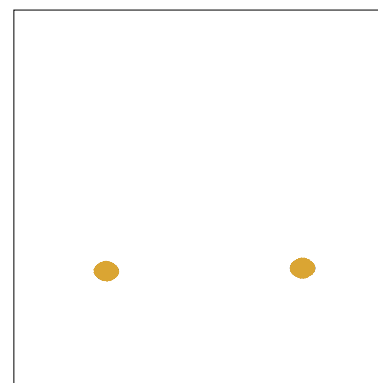
Code: 1000

Name: Black

Chart: Madeira Classic 40

Stitches: 9,875

Thread used: 62.16m



Stop #: 3

Element:

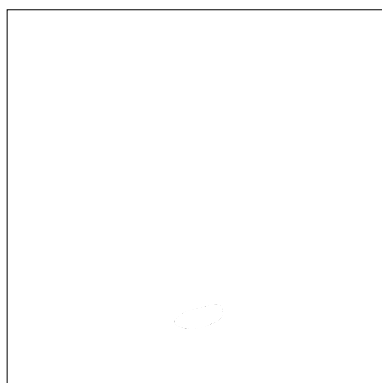
Code: 1372

Name: Pumpkin Spice

Chart: Madeira Classic 40

Stitches: 492

Thread used: 2.15m



Stop #: 4

Element:

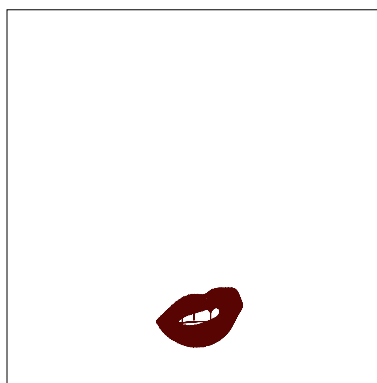
Code: 1003

Name: White

Chart: Madeira Classic 40

Stitches: 187

Thread used: 1.61m



Stop #: 5

Element:

Code: 1385

Name: Garnet

Chart: Madeira Classic 40

Stitches: 1,299

Thread used: 6.86m