

Production Worksheet

Wilcom EmbroideryStudio - Designing

SPERROW 5X7

Design: **Sperrow 5x7**

Title:

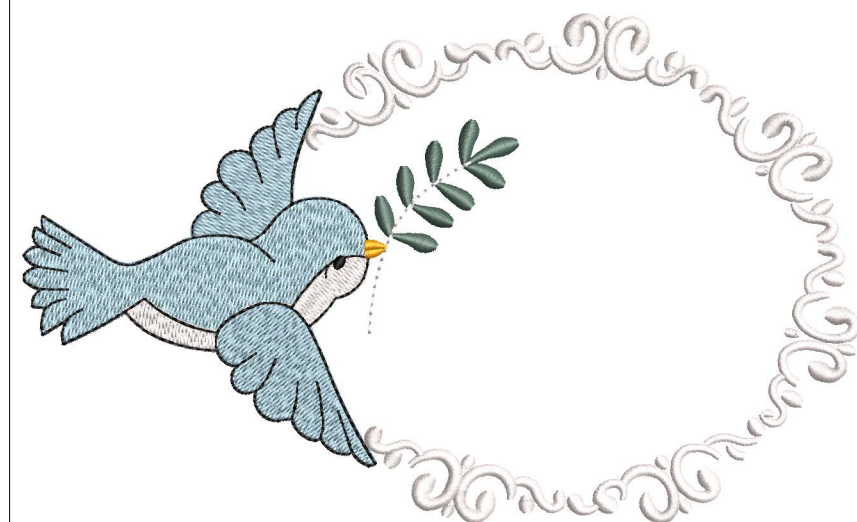
Stitches: 12,735
Height: 108.6 mm
Width: 178.1 mm
Colors: 5
Colorway: Colorway 1
Zoom: 0.62

z digitizing
support@zdigitizing.com
+1 (213) 788-6748

Machine format: Tajima
Color changes: 6
Stops: 7
Trims: 14
Left: 89.0 mm
Right: 89.0 mm
Up: 54.3 mm
Down: 54.3 mm
EndX: 0.0 mm
EndY: 0.0 mm
Area: 19341.4 mm²
Max stitch: 6.8 mm
Min stitch: 0.2 mm
Max jump: 6.9 mm

Stop Sequence:

#	N#	Color	St.	Code	Name	Chart
1.	1		5,124	1092	Summer Sky	Madeira Classic 40
2.	4		5,804	1003	White	Madeira Classic 40
3.	3		6,701	1000	Black	Madeira Classic 40
4.	2		7,313	1391	Spruce Green	Madeira Classic 40
5.	4		7,392	1003	White	Madeira Classic 40
6.	5		7,475	1137	Citrus Burst	Madeira Classic 40
7.	4		12,733	1003	White	Madeira Classic 40



Color Film

Wilcom EmbroideryStudio - Designing

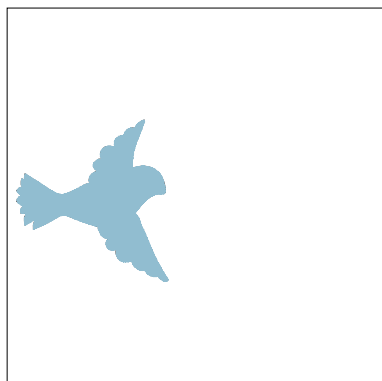
SPERROW 5X7

Design: **Sperrow 5x7**

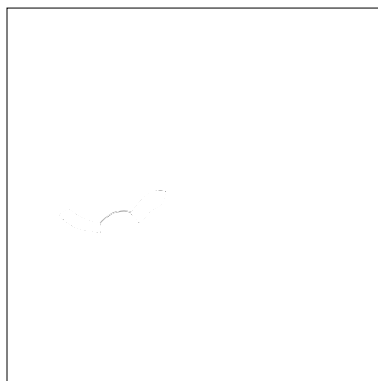
Title:

Stitches: 12,735
Height: 108.6 mm
Width: 178.1 mm
Colors: 5
Colorway: Colorway 1
Zoom: 0.27

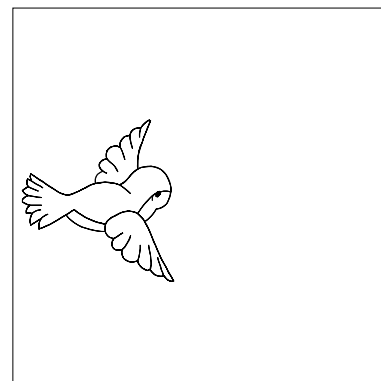
 **digitizing**
support@zdigitizing.com
+1 (213) 788-6748



Stop #: 1
Element:
Code: 1092
Name: Summer Sky
Chart: Madeira Classic 40
Stitches: 5,124
Thread used: 31.08m



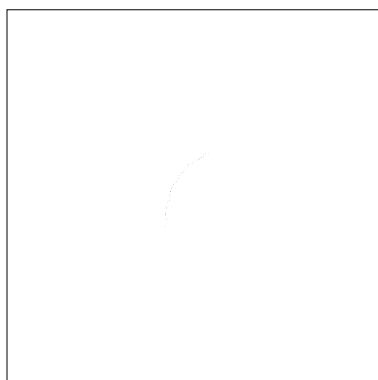
Stop #: 2
Element:
Code: 1003
Name: White
Chart: Madeira Classic 40
Stitches: 680
Thread used: 3.51m



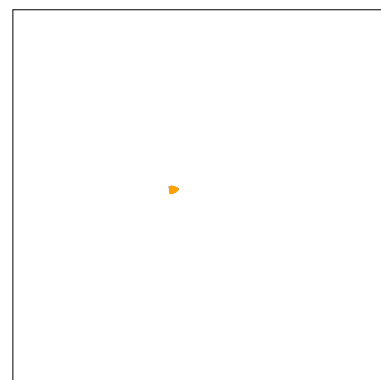
Stop #: 3
Element:
Code: 1000
Name: Black
Chart: Madeira Classic 40
Stitches: 897
Thread used: 3.77m



Stop #: 4
Element:
Code: 1391
Name: Spruce Green
Chart: Madeira Classic 40
Stitches: 612
Thread used: 3.36m



Stop #: 5
Element:
Code: 1003
Name: White
Chart: Madeira Classic 40
Stitches: 79
Thread used: 0.35m



Stop #: 6
Element:
Code: 1137
Name: Citrus Burst
Chart: Madeira Classic 40
Stitches: 83
Thread used: 0.33m



Stop #: 7
Element:
Code: 1003
Name: White
Chart: Madeira Classic 40
Stitches: 5,258
Thread used: 25.82m