

Production Worksheet

Wilcom EmbroideryStudio - Designing

SPIDER 5X7

Design: **Spider 5x7**





Title:

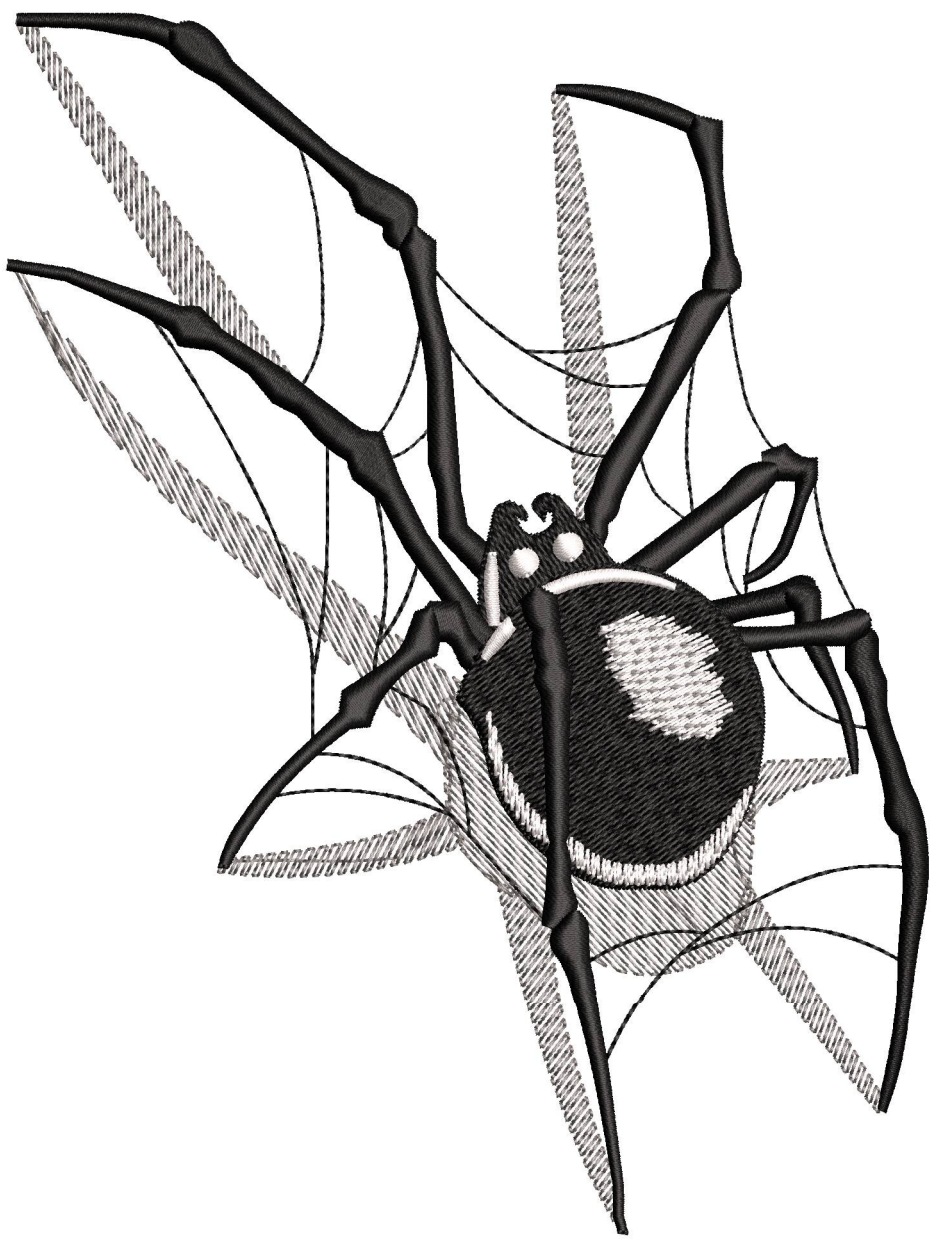
Stitches: 12,967
Height: 168.7 mm
Width: 127.2 mm
Colors: 3
Colorway: Colorway 1
Zoom: 0.96

z digitizing
support@zdigitizing.com
+1 (213) 788-6748

Machine format: Tajima
Color changes: 3
Stops: 4
Trims: 11
Left: 63.6 mm
Right: 63.6 mm
Up: 84.4 mm
Down: 84.4 mm
EndX: 0.0 mm
EndY: 0.0 mm
Area: 21458.2 mm²
Max stitch: 10.2 mm
Min stitch: 0.3 mm
Max jump: 7.0 mm

Stop Sequence:

#	N#	Color	St.	Code	Name	Chart
1.	1		1,944	1287	Gun Metal	Madeira Classic 40
2.	2		11,301	1000	Black	Madeira Classic 40
3.	3		12,063	1003	White	Madeira Classic 40
4.	2		12,965	1000	Black	Madeira Classic 40



Color Film

Wilcom EmbroideryStudio - Designing

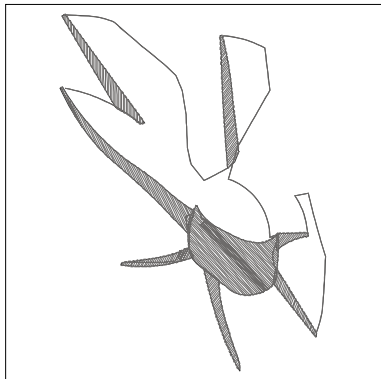
SPIDER 5X7

Design: **Spider 5x7**

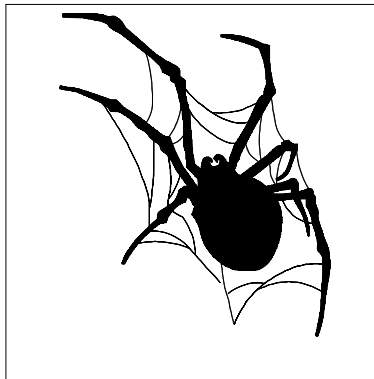
Title:

Stitches: 12,967
Height: 168.7 mm
Width: 127.2 mm
Colors: 3
Colorway: Colorway 1
Zoom: 0.28

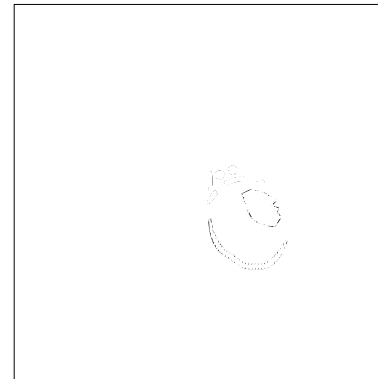
z digitizing
support@zdigitizing.com
+1 (213) 788-6748



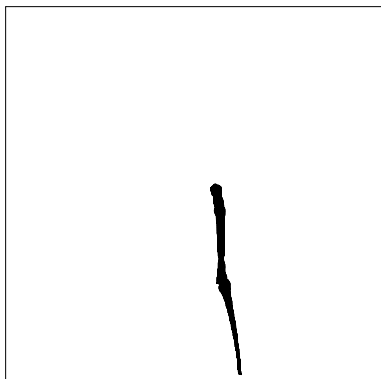
Stop #: 1
Element:
Code: 1287
Name: Gun Metal
Chart: Madeira Classic 40
Stitches: 1,944
Thread used: 10.21m



Stop #: 2
Element:
Code: 1000
Name: Black
Chart: Madeira Classic 40
Stitches: 9,357
Thread used: 58.54m



Stop #: 3
Element:
Code: 1003
Name: White
Chart: Madeira Classic 40
Stitches: 762
Thread used: 3.59m



Stop #: 4
Element:
Code: 1000
Name: Black
Chart: Madeira Classic 40
Stitches: 902
Thread used: 5.31m