

Production Worksheet

Wilcom EmbroideryStudio - Designing

WOMEN DAY B 5X5

Design: **Women Day B 5x5**



Title:

Stitches: 20,106
Height: 107.6 mm
Width: 127.3 mm
Colors: 2
Colorway: Colorway 1
Zoom: 0.96

z digitizing
support@zdigitizing.com
+1 (213) 788-6748

Machine format: Tajima
Color changes: 1
Stops: 2
Trims: 15
Left: 63.7 mm
Right: 63.7 mm
Up: 53.8 mm
Down: 53.8 mm
EndX: 0.0 mm
EndY: 0.0 mm
Area: 13697.5 mm²
Max stitch: 6.9 mm
Min stitch: 0.2 mm
Max jump: 7.0 mm

Stop Sequence:

#	N#	Color	St.	Code	Name	Chart
1.	1		14,896	1389	Bordeaux	Madeira Classic 40
2.	2		20,104	1003	White	Madeira Classic 40



Color Film

Wilcom EmbroideryStudio - Designing

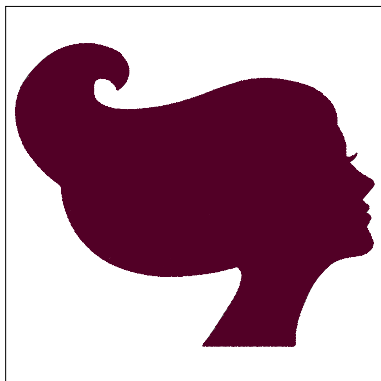
WOMEN DAY B 5X5

Design: **Women Day B 5x5**

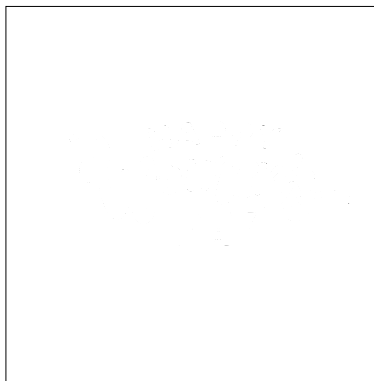
Title:

Stitches: 20,106
Height: 107.6 mm
Width: 127.3 mm
Colors: 2
Colorway: Colorway 1
Zoom: 0.37


support@zdigitizing.com
+1 (213) 788-6748



Stop #: 1
Element:
Code: 1389
Name: Bordeaux
Chart: Madeira Classic 40
Stitches: 14,896
Thread used: 103.61m



Stop #: 2
Element:
Code: 1003
Name: White
Chart: Madeira Classic 40
Stitches: 5,208
Thread used: 26.68m