

Production Worksheet

Wilcom EmbroideryStudio - Designing

WOMEN DAY 0 4X4

Design: **Women Day O 4x4**

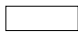

Title:

Stitches: 6,320
Height: 60.1 mm
Width: 95.3 mm
Colors: 2
Colorway: Colorway 1
Zoom: 1.36

z digitizing
support@zdigitizing.com
+1 (213) 788-6748

Machine format: Tajima
Color changes: 1
Stops: 2
Trims: 18
Left: 47.7 mm
Right: 47.7 mm
Up: 30.1 mm
Down: 30.0 mm
EndX: 0.0 mm
EndY: 0.0 mm
Area: 5730.4 mm²
Max stitch: 7.0 mm
Min stitch: 0.1 mm
Max jump: 7.0 mm

Stop Sequence:

| # | N# | Color | St. | Code | Name | Chart |
|----|----|---|-------|------|-------|--------------------|
| 1. | 1 |  | 2,334 | 1003 | White | Madeira Classic 40 |
| 2. | 2 |  | 6,318 | 1166 | Blue | Madeira Classic 40 |



Color Film

Wilcom EmbroideryStudio - Designing

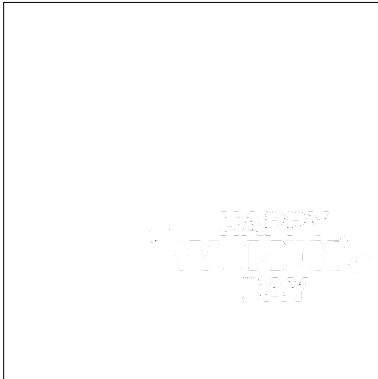
WOMEN DAY 0 4X4

Design: **Women Day O 4x4**

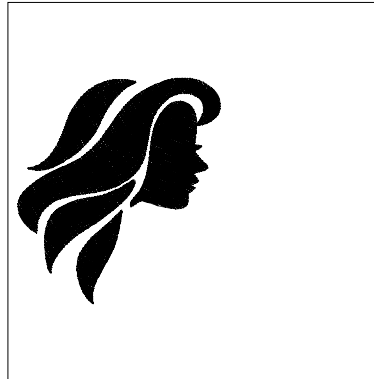
Title:

Stitches: 6,320
Height: 60.1 mm
Width: 95.3 mm
Colors: 2
Colorway: Colorway 1
Zoom: 0.50


support@zdigitizing.com
+1 (213) 788-6748



Stop #: 1
Element:
Code: 1003
Name: White
Chart: Madeira Classic 40
Stitches: 2,334
Thread used: 9.87m



Stop #: 2
Element:
Code: 1166
Name: Blue
Chart: Madeira Classic 40
Stitches: 3,984
Thread used: 21.54m