

Production Worksheet

Wilcom EmbroideryStudio - Designing

WOMEN DAY 0 5X5

Design: **Women Day O 5x5**



Title:

Stitches: 9,338
Height: 80.4 mm
Width: 127.3 mm
Colors: 2
Colorway: Colorway 1
Zoom: 1.02

z digitizing
support@zdigitizing.com
+1 (213) 788-6748

Machine format: Tajima
Color changes: 1
Stops: 2
Trims: 18
Left: 63.7 mm
Right: 63.7 mm
Up: 40.2 mm
Down: 40.2 mm
EndX: 0.0 mm
EndY: 0.0 mm
Area: 10233.8 mm²
Max stitch: 6.9 mm
Min stitch: 0.3 mm
Max jump: 7.1 mm

Stop Sequence:

#	N#	Color	St.	Code	Name	Chart
1.	1		3,017	1003	White	Madeira Classic 40
2.	2		9,336	1166	Blue	Madeira Classic 40



Color Film

Wilcom EmbroideryStudio - Designing

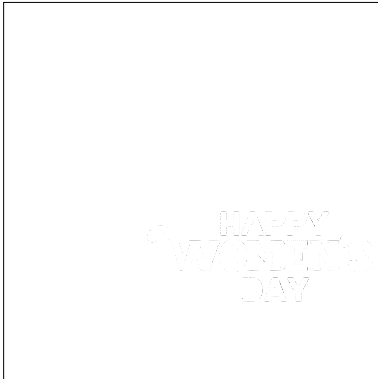
WOMEN DAY 0 5X5

Design: **Women Day O 5x5**

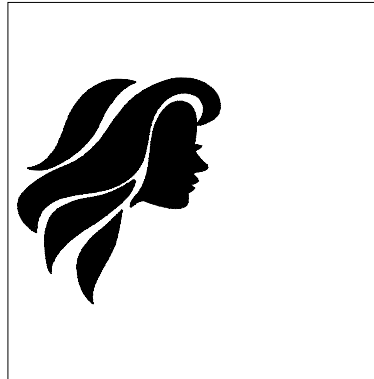
Title:

Stitches: 9,338
Height: 80.4 mm
Width: 127.3 mm
Colors: 2
Colorway: Colorway 1
Zoom: 0.37


support@zdigitizing.com
+1 (213) 788-6748



Stop #: 1
Element:
Code: 1003
Name: White
Chart: Madeira Classic 40
Stitches: 3,017
Thread used: 14.36m



Stop #: 2
Element:
Code: 1166
Name: Blue
Chart: Madeira Classic 40
Stitches: 6,319
Thread used: 36.37m