

Production Worksheet

Wilcom EmbroideryStudio - Designing

WOMEN DAY U 4X4

Design: **Women Day U 4x4**



Title:

Stitches: 9,237
Height: 83.1 mm
Width: 95.4 mm
Colors: 2
Colorway: Colorway 1
Zoom: 1.26

z digitizing
support@zdigitizing.com
+1 (213) 788-6748

Machine format: Tajima
Color changes: 1
Stops: 2
Trims: 3
Left: 47.7 mm
Right: 47.7 mm
Up: 41.5 mm
Down: 41.5 mm
EndX: 0.0 mm
EndY: 0.0 mm
Area: 7931.4 mm²
Max stitch: 6.9 mm
Min stitch: 0.4 mm
Max jump: 6.9 mm

Stop Sequence:

#	N#	Color	St.	Code	Name	Chart
1.	2		5,599	1488		Madeira Classic 40
2.	1		9,235	1184	Scarlet Rose	Madeira Classic 40



Color Film

Wilcom EmbroideryStudio - Designing

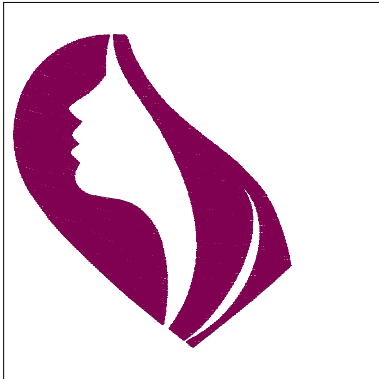
WOMEN DAY U 4X4

Design: **Women Day U 4x4**

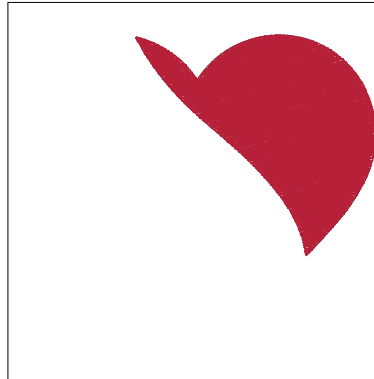
Title:

Stitches: 9,237
Height: 83.1 mm
Width: 95.4 mm
Colors: 2
Colorway: Colorway 1
Zoom: 0.50


support@zdigitizing.com
+1 (213) 788-6748



Stop #: 1
Element:
Code: 1488
Name:
Chart: Madeira Classic 40
Stitches: 5,599
Thread used: 33.53m



Stop #: 2
Element:
Code: 1184
Name: Scarlet Rose
Chart: Madeira Classic 40
Stitches: 3,636
Thread used: 24.03m