

# Production Worksheet

Wilcom EmbroideryStudio - Designing

## \*BUTTERFLY F 5X5\*

Design: **Butterfly F 5x5**

Title:

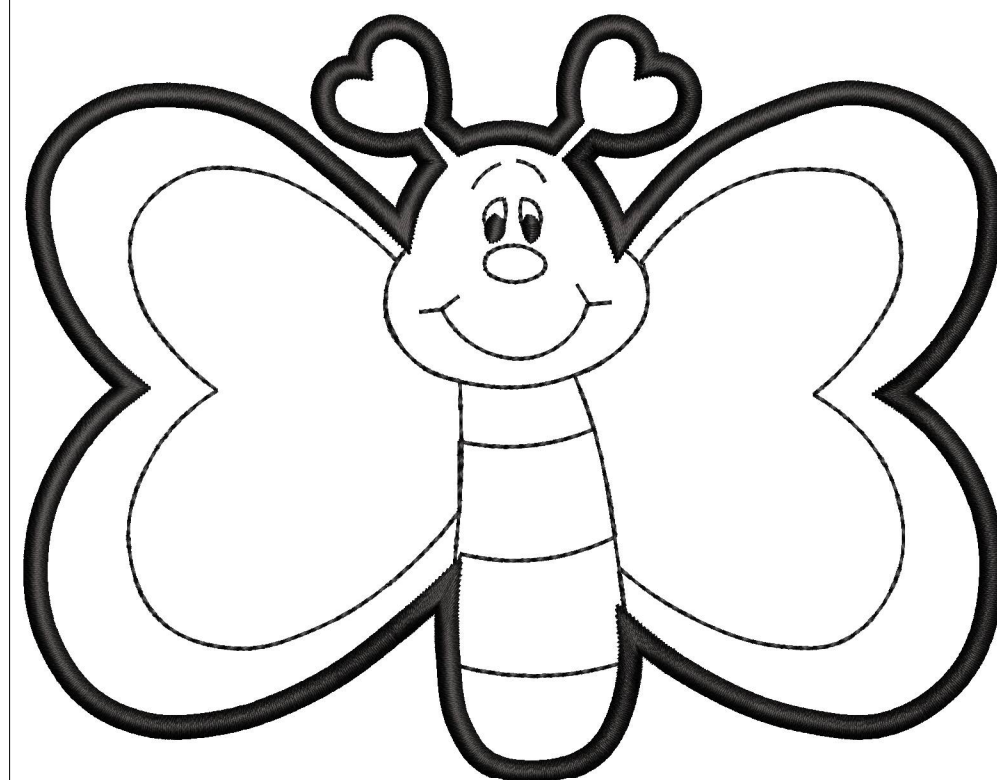
Stitches: 5,688  
Height: 99.9 mm  
Width: 127.3 mm  
Colors: 1  
Colorway: Colorway 1  
Zoom: 1.02

**z digitizing**  
support@zdigitizing.com  
+1 (213) 788-6748

Machine format: Tajima  
Color changes: 0  
Stops: 1  
Trims: 6  
Left: 63.7 mm  
Right: 63.7 mm  
Up: 49.9 mm  
Down: 49.9 mm  
EndX: 0.0 mm  
EndY: 0.0 mm  
Area: 12716.8 mm<sup>2</sup>  
Max stitch: 7.2 mm  
Min stitch: 0.3 mm  
Max jump: 6.0 mm

Stop Sequence:

#	N#	Color	St.	Code	Name	Chart
1.	1	■	5,686	1000	Black	Madeira Classic 40



# Color Film

Wilcom EmbroideryStudio - Designing

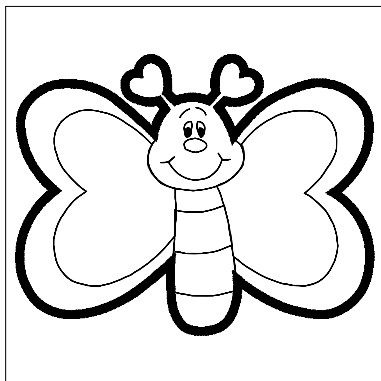
**\*BUTTERFLY F 5X5\***

Design: **Butterfly F 5x5**

Title:

Stitches: 5,688  
Height: 99.9 mm  
Width: 127.3 mm  
Colors: 1  
Colorway: Colorway 1  
Zoom: 0.37

**z digitizing**  
support@zdigitizing.com  
**+1 (213) 788-6748**



Stop #: 1

Element:

Code: 1000

Name: Black

Chart: Madeira Classic 40

Stitches: 5,686

Thread used: 32.98m