

Production Worksheet

Wilcom EmbroideryStudio - Designing

BEE WITH FLOWER C 5X5

Design: Bee With Flower C 5x5





Title:

Stitches: 12,462
Height: 108.6 mm
Width: 126.9 mm
Colors: 3
Colorway: Colorway 1
Zoom: 1.00

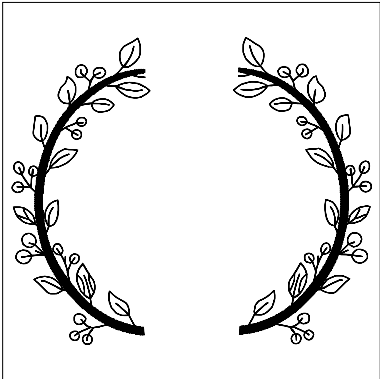
z digitizing
support@zdigitizing.com
+1 (213) 788-6748

Machine format: Tajima
Color changes: 3
Stops: 4
Trims: 8
Left: 63.5 mm
Right: 63.5 mm
Up: 54.3 mm
Down: 54.3 mm
EndX: 0.0 mm
EndY: 0.0 mm
Area 13780.0 mm²
Max stitch: 11.9 mm
Min stitch: 0.1 mm
Max jump: 7.1 mm

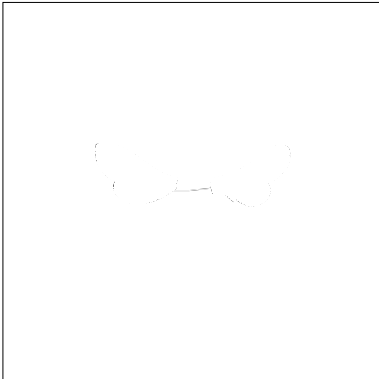
Stop Sequence:

| # | N# | Color | St. | Code | Name | Chart |
|----|----|---|--------|------|--------|--------------------|
| 1. | 2 |  | 5,759 | 1000 | Black | Madeira Classic 40 |
| 2. | 3 |  | 7,470 | 1003 | White | Madeira Classic 40 |
| 3. | 2 |  | 12,021 | 1000 | Black | Madeira Classic 40 |
| 4. | 1 |  | 12,460 | 1083 | Yellow | Madeira Classic 40 |

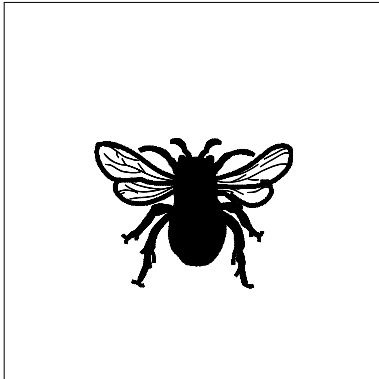




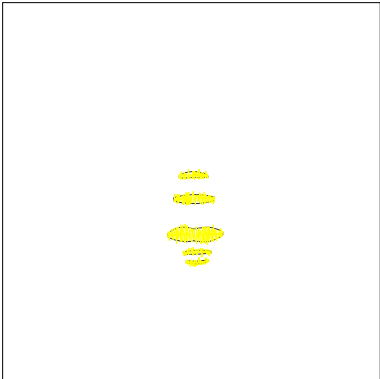
Stop #: 1
Element:
Code: 1000
Name: Black
Chart: Madeira Classic 40
Stitches: 5,759
Thread used: 24.77m



Stop #: 2
Element:
Code: 1003
Name: White
Chart: Madeira Classic 40
Stitches: 1,711
Thread used: 10.03m



Stop #: 3
Element:
Code: 1000
Name: Black
Chart: Madeira Classic 40
Stitches: 4,551
Thread used: 22.78m



Stop #: 4
Element:
Code: 1083
Name: Yellow
Chart: Madeira Classic 40
Stitches: 439
Thread used: 1.75m