

# Production Worksheet

Wilcom EmbroideryStudio - Designing

## \*HONEY BEE J 2X2\*

Design: **Honey Bee J 2x2**

Title:

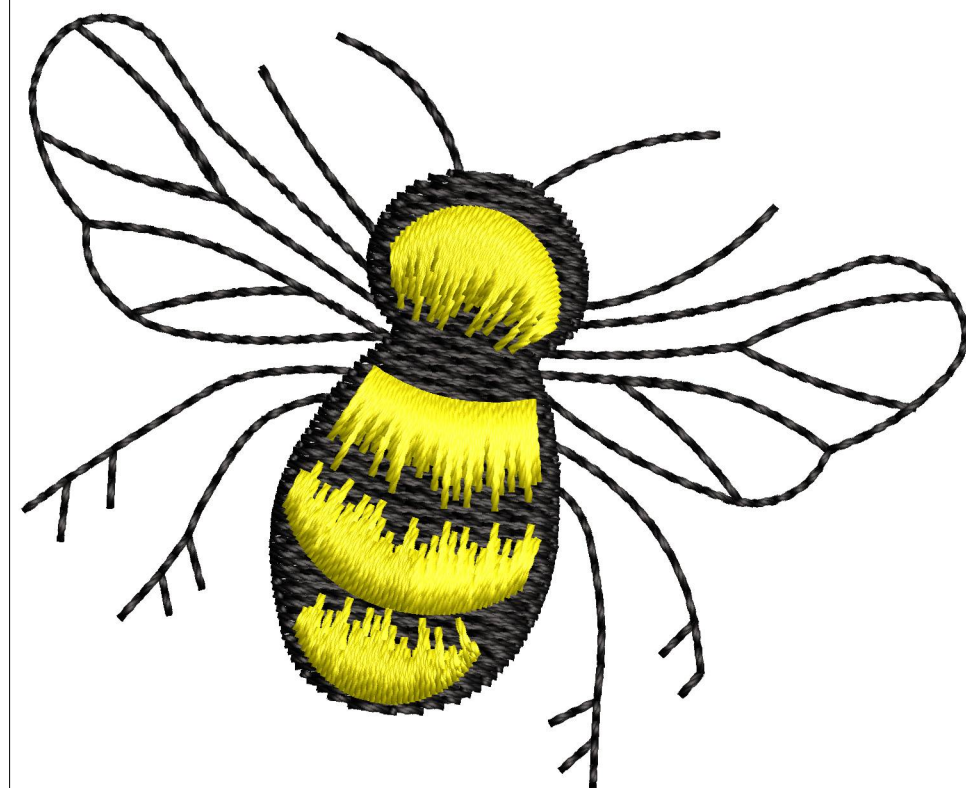
Stitches: 2,215  
Height: 41.6 mm  
Width: 50.8 mm  
Colors: 2  
Colorway: Colorway 1  
Zoom: 2.45

**z digitizing**  
support@zdigitizing.com  
+1 (213) 788-6748

Machine format: Tajima  
Color changes: 1  
Stops: 2  
Trims: 5  
Left: 25.4 mm  
Right: 25.4 mm  
Up: 20.8 mm  
Down: 20.8 mm  
EndX: 0.0 mm  
EndY: 0.0 mm  
Area: 2111.6 mm<sup>2</sup>  
Max stitch: 6.8 mm  
Min stitch: 0.4 mm  
Max jump: 6.8 mm

Stop Sequence:

#	N#	Color	St.	Code	Name	Chart
1.	2	■	1,693	1000	Black	Madeira Classic 40
2.	1	■	2,213	1124	Buttercup	Madeira Classic 40



# Color Film

Wilcom EmbroideryStudio - Designing

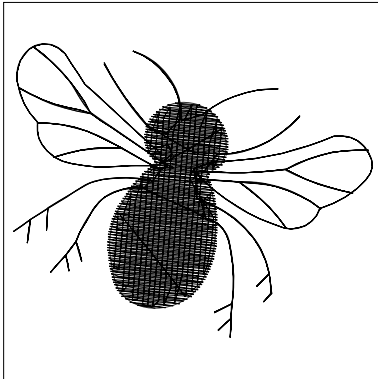
## \*HONEY BEE J 2X2\*

Design: **Honey Bee J 2x2**

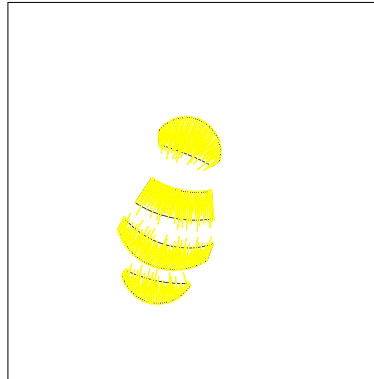
Title:

Stitches: 2,215  
Height: 41.6 mm  
Width: 50.8 mm  
Colors: 2  
Colorway: Colorway 1  
Zoom: 0.93

  
support@zdigitizing.com  
+1 (213) 788-6748



Stop #: 1  
Element:  
Code: 1000  
Name: Black  
Chart: Madeira Classic 40  
Stitches: 1,693  
Thread used: 8.51m



Stop #: 2  
Element:  
Code: 1124  
Name: Buttercup  
Chart: Madeira Classic 40  
Stitches: 520  
Thread used: 3.30m