

# Production Worksheet

Wilcom EmbroideryStudio - Designing

## \*HONEY BEE J 3X3\*

Design: **Honey Bee J 3x3**

Title:

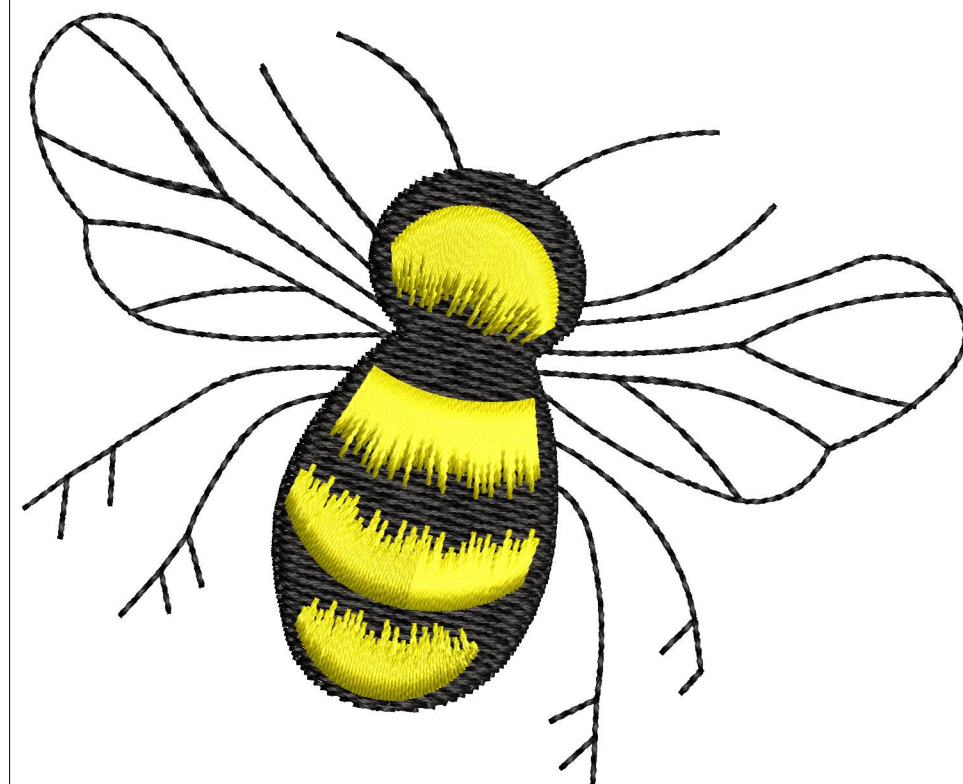
Stitches: 3,605  
Height: 62.4 mm  
Width: 76.2 mm  
Colors: 2  
Colorway: Colorway 1  
Zoom: 1.64

**z digitizing**  
support@zdigitizing.com  
+1 (213) 788-6748

Machine format: Tajima  
Color changes: 1  
Stops: 2  
Trims: 5  
Left: 38.1 mm  
Right: 38.1 mm  
Up: 31.2 mm  
Down: 31.2 mm  
EndX: 0.0 mm  
EndY: 0.0 mm  
Area: 4753.0 mm<sup>2</sup>  
Max stitch: 8.5 mm  
Min stitch: 0.2 mm  
Max jump: 6.1 mm

Stop Sequence:

#	N#	Color	St.	Code	Name	Chart
1.	2	■	2,845	1000	Black	Madeira Classic 40
2.	1	■	3,603	1124	Buttercup	Madeira Classic 40



# Color Film

Wilcom EmbroideryStudio - Designing

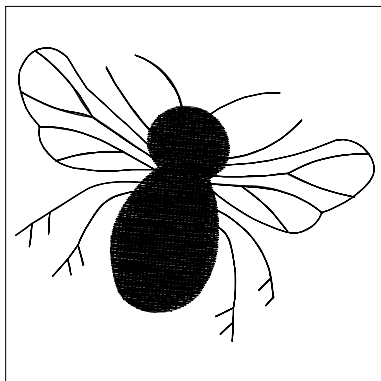
## \*HONEY BEE J 3X3\*

Design: **Honey Bee J 3x3**

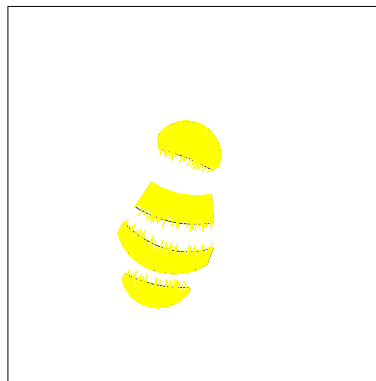
Title:

Stitches: 3,605  
Height: 62.4 mm  
Width: 76.2 mm  
Colors: 2  
Colorway: Colorway 1  
Zoom: 0.62

  
support@zdigitizing.com  
+1 (213) 788-6748



Stop #: 1  
Element:  
Code: 1000  
Name: Black  
Chart: Madeira Classic 40  
Stitches: 2,845  
Thread used: 15.62m



Stop #: 2  
Element:  
Code: 1124  
Name: Buttercup  
Chart: Madeira Classic 40  
Stitches: 758  
Thread used: 6.30m