

Production Worksheet

Wilcom EmbroideryStudio - Designing

HONEY BEE L 4X4

Design: **Honey Bee L 4x4**

Title:

Stitches: 10,382
Height: 92.0 mm
Width: 95.3 mm
Colors: 3
Colorway: Colorway 1
Zoom: 1.18

z digitizing
support@zdigitizing.com
+1 (213) 788-6748

Machine format: Tajima
Color changes: 2
Stops: 3
Trims: 6
Left: 47.7 mm
Right: 47.7 mm
Up: 46.0 mm
Down: 46.0 mm
EndX: 0.0 mm
EndY: 0.0 mm
Area: 8769.0 mm²
Max stitch: 6.5 mm
Min stitch: 0.0 mm
Max jump: 6.5 mm

Stop Sequence:

#	N#	Color	St.	Code	Name	Chart
1.	3	Black	4,377	1000	Black	Madeira Classic 40
2.	1	Sunshine Yellow	7,335	1069	Sunshine Yellow	Madeira Classic 40
3.	2	Gold Rush	10,380	1024	Gold Rush	Madeira Classic 40



Color Film

Wilcom EmbroideryStudio - Designing

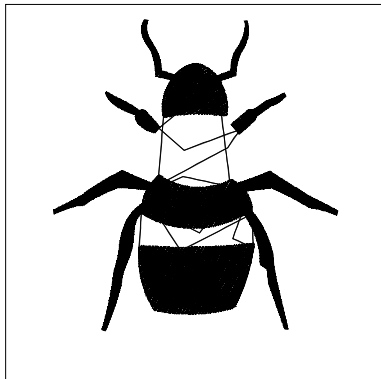
HONEY BEE L 4X4

Design: **Honey Bee L 4x4**

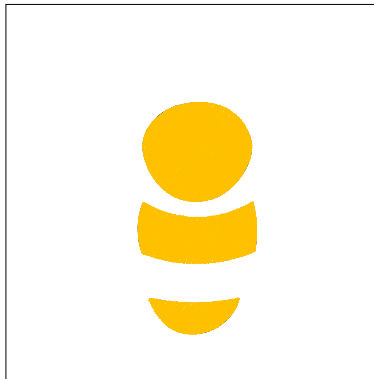
Title:

Stitches: 10,382
Height: 92.0 mm
Width: 95.3 mm
Colors: 3
Colorway: Colorway 1
Zoom: 0.50

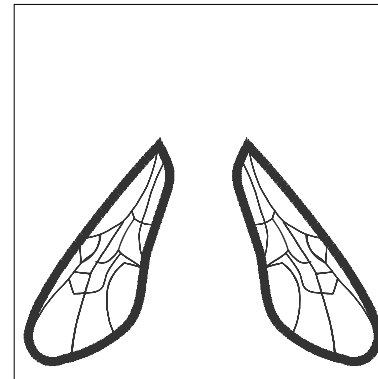

support@zdigitizing.com
+1 (213) 788-6748



Stop #: 1
Element:
Code: 1000
Name: Black
Chart: Madeira Classic 40
Stitches: 4,377
Thread used: 24.34m



Stop #: 2
Element:
Code: 1069
Name: Sunshine Yellow
Chart: Madeira Classic 40
Stitches: 2,958
Thread used: 17.44m



Stop #: 3
Element:
Code: 1024
Name: Gold Rush
Chart: Madeira Classic 40
Stitches: 3,045
Thread used: 14.73m