

# Production Worksheet

Wilcom EmbroideryStudio - Designing

## \*MEMORIAL D 6X6\*

Design: **Memorial D 6x6**




Title:

Stitches: 18,128  
Height: 118.9 mm  
Width: 152.0 mm  
Colors: 3  
Colorway: Colorway 1  
Zoom: 0.84

**z digitizing**  
support@zdigitizing.com  
+1 (213) 788-6748

Machine format: Tajima  
Color changes: 2  
Stops: 3  
Trims: 45  
Left: 76.0 mm  
Right: 76.0 mm  
Up: 59.5 mm  
Down: 59.5 mm  
EndX: 0.0 mm  
EndY: 0.0 mm  
Area: 18081.5 mm<sup>2</sup>  
Max stitch: 7.9 mm  
Min stitch: 0.1 mm  
Max jump: 6.9 mm

Stop Sequence:

#	N#	Color	St.	Code	Name	Chart
1.	2		11,526	1037	Red	Madeira Classic 40
2.	1		15,524	1466		Madeira Classic 40
3.	3		18,126	1004	White	Madeira Classic 40



# Color Film

Wilcom EmbroideryStudio - Designing

# \*MEMORIAL D 6X6\*

Design: **Memorial D 6x6**

Title:

Stitches: 18,128  
Height: 118.9 mm  
Width: 152.0 mm  
Colors: 3  
Colorway: Colorway 1  
Zoom: 0.31

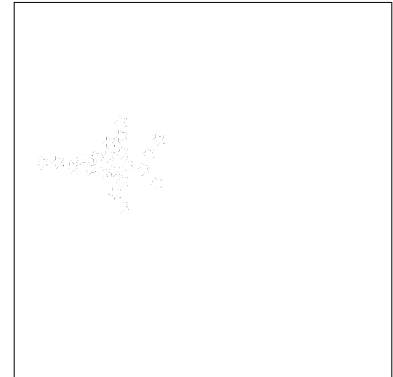
  
support@zdigitizing.com  
+1 (213) 788-6748



Stop #: 1  
Element:  
Code: 1037  
Name: Red  
Chart: Madeira Classic 40  
Stitches: 11,526  
Thread used: 69.55m



Stop #: 2  
Element:  
Code: 1466  
Name:  
Chart: Madeira Classic 40  
Stitches: 3,998  
Thread used: 23.47m



Stop #: 3  
Element:  
Code: 1004  
Name: White  
Chart: Madeira Classic 40  
Stitches: 2,602  
Thread used: 8.56m