

# Production Worksheet

Wilcom EmbroideryStudio - Designing

## \*PIGEONS 5X5\*

Design: **Pigeons 5x5**



Title:

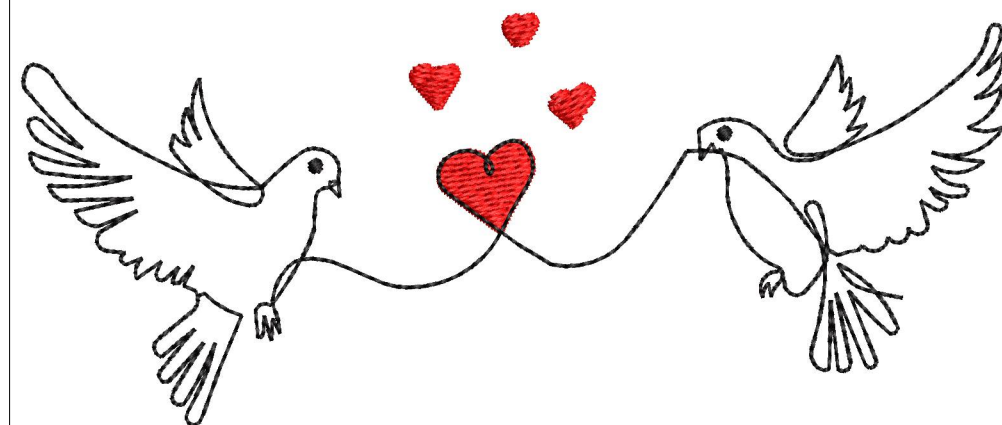
Stitches: 2,548  
Height: 53.1 mm  
Width: 127.0 mm  
Colors: 2  
Colorway: Colorway 1  
Zoom: 1.02

**z digitizing**  
support@zdigitizing.com  
+1 (213) 788-6748

Machine format: Tajima  
Color changes: 1  
Stops: 2  
Trims: 7  
Left: 63.5 mm  
Right: 63.5 mm  
Up: 26.6 mm  
Down: 26.6 mm  
EndX: 0.0 mm  
EndY: 0.0 mm  
Area: 6747.8 mm<sup>2</sup>  
Max stitch: 6.6 mm  
Min stitch: 0.2 mm  
Max jump: 6.6 mm

Stop Sequence:

#	N#	Color	St.	Code	Name	Chart
1.	1		613	1037	Red	Madeira Classic 40
2.	2		2,546	1000	Black	Madeira Classic 40



# Color Film

Wilcom EmbroideryStudio - Designing

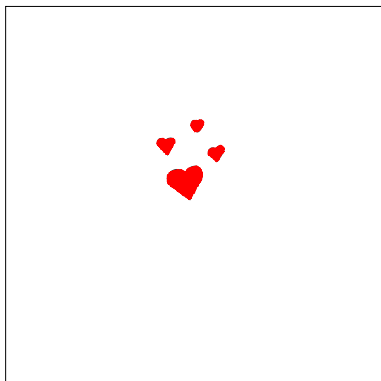
## \*PIGEONS 5X5\*

Design: **Pigeons 5x5**

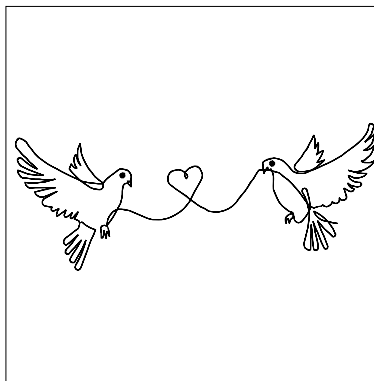
Title:

Stitches: 2,548  
Height: 53.1 mm  
Width: 127.0 mm  
Colors: 2  
Colorway: Colorway 1  
Zoom: 0.37

 **digitizing**  
support@zdigitizing.com  
+1 (213) 788-6748



Stop #: 1  
Element:  
Code: 1037  
Name: Red  
Chart: Madeira Classic 40  
Stitches: 613  
Thread used: 2.84m



Stop #: 2  
Element:  
Code: 1000  
Name: Black  
Chart: Madeira Classic 40  
Stitches: 1,933  
Thread used: 7.46m