

Production Worksheet

Wilcom EmbroideryStudio - Designing

PIGEONS 5X6

Design: **Pigeons 5x6**



Title:

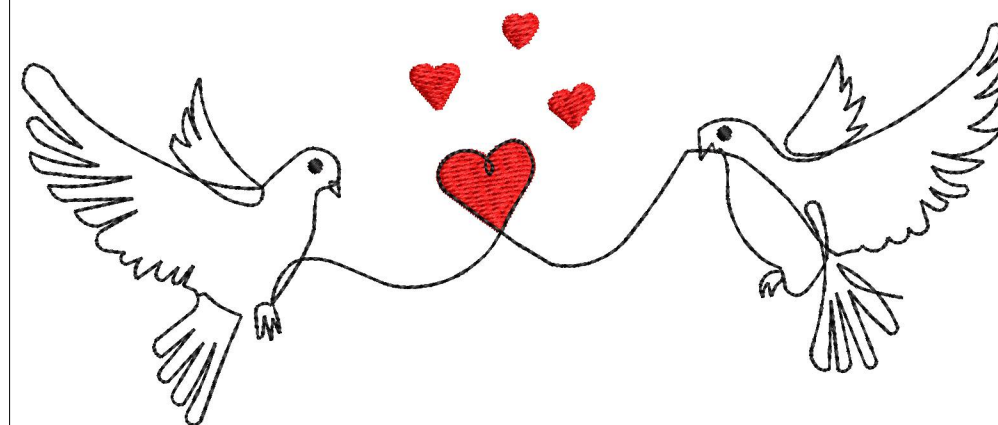
Stitches: 2,997
Height: 63.5 mm
Width: 152.0 mm
Colors: 2
Colorway: Colorway 1
Zoom: 0.85

z digitizing
support@zdigitizing.com
+1 (213) 788-6748

Machine format: Tajima
Color changes: 1
Stops: 2
Trims: 7
Left: 76.0 mm
Right: 76.0 mm
Up: 31.8 mm
Down: 31.8 mm
EndX: 0.0 mm
EndY: 0.0 mm
Area: 9658.5 mm²
Max stitch: 6.8 mm
Min stitch: 0.2 mm
Max jump: 6.8 mm

Stop Sequence:

#	N#	Color	St.	Code	Name	Chart
1.	1		778	1037	Red	Madeira Classic 40
2.	2		2,995	1000	Black	Madeira Classic 40



Color Film

Wilcom EmbroideryStudio - Designing

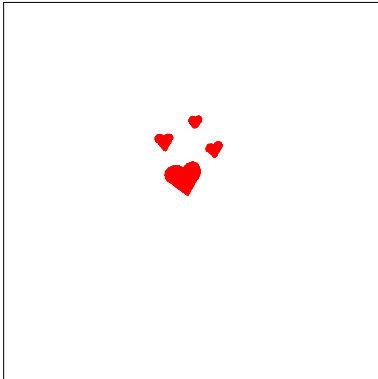
PIGEONS 5X6

Design: **Pigeons 5x6**

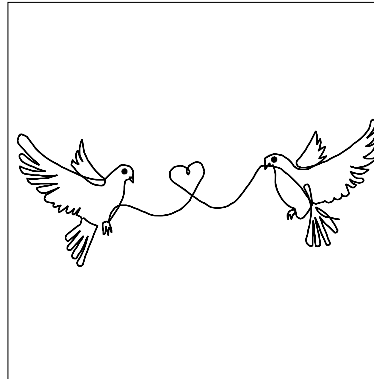
Title:

Stitches: 2,997
Height: 63.5 mm
Width: 152.0 mm
Colors: 2
Colorway: Colorway 1
Zoom: 0.31


support@zdigitizing.com
+1 (213) 788-6748



Stop #: 1
Element:
Code: 1037
Name: Red
Chart: Madeira Classic 40
Stitches: 778
Thread used: 3.78m



Stop #: 2
Element:
Code: 1000
Name: Black
Chart: Madeira Classic 40
Stitches: 2,217
Thread used: 8.75m