

Production Worksheet

Wilcom EmbroideryStudio - Designing

GIRL AC 5X5

Design: **Girl AC 5x5**

Title:

Stitches: 2,808

Height: 127.0 mm

Width: 91.7 mm

Colors: 2

Colorway: Colorway 1

Zoom: 1.34

z digitizing
support@zdigitizing.com
+1 (213) 788-6748

Machine format: Tajima

Color changes: 1

Stops: 2

Trims: 2

Left: 45.8 mm

Right: 45.8 mm

Up: 63.5 mm

Down: 63.5 mm

EndX: 0.0 mm

EndY: 0.0 mm



Area: 11639.3 mm²

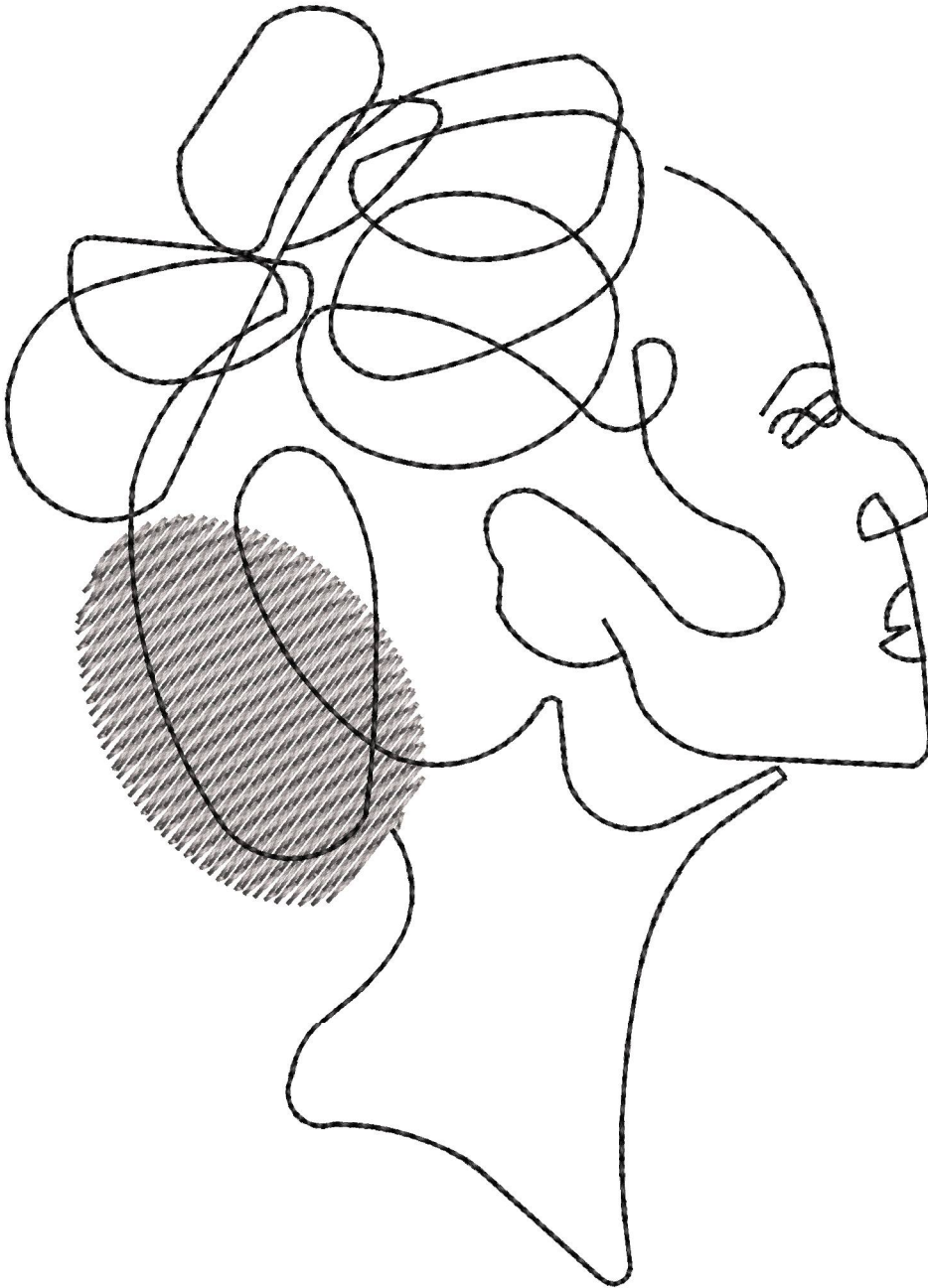
Max stitch: 6.5 mm

Min stitch: 0.3 mm

Max jump: 6.8 mm

Stop Sequence:

#	N#	Color	St.	Code	Name	Chart
1.	2		587	1366	Sailor Blue	Madeira Classic 40
2.	1		2,806	1000	Black	Madeira Classic 40



Color Film

Wilcom EmbroideryStudio - Designing

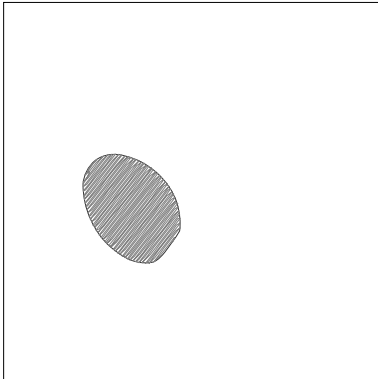
GIRL AC 5X5

Design: **Girl AC 5x5**

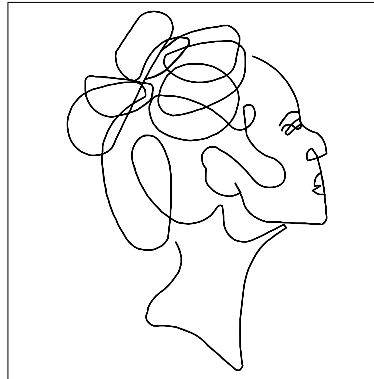
Title:

Stitches: 2,808
Height: 127.0 mm
Width: 91.7 mm
Colors: 2
Colorway: Colorway 1
Zoom: 0.37


support@zdigitizing.com
+1 (213) 788-6748



Stop #: 1
Element:
Code: 1366
Name: Sailor Blue
Chart: Madeira Classic 40
Stitches: 587
Thread used: 3.85m



Stop #: 2
Element:
Code: 1000
Name: Black
Chart: Madeira Classic 40
Stitches: 2,219
Thread used: 9.25m