

# Production Worksheet

Wilcom EmbroideryStudio - Designing

## \*GIRL AF 5X5\*

Design: **Girl AF 5x5**




Title:

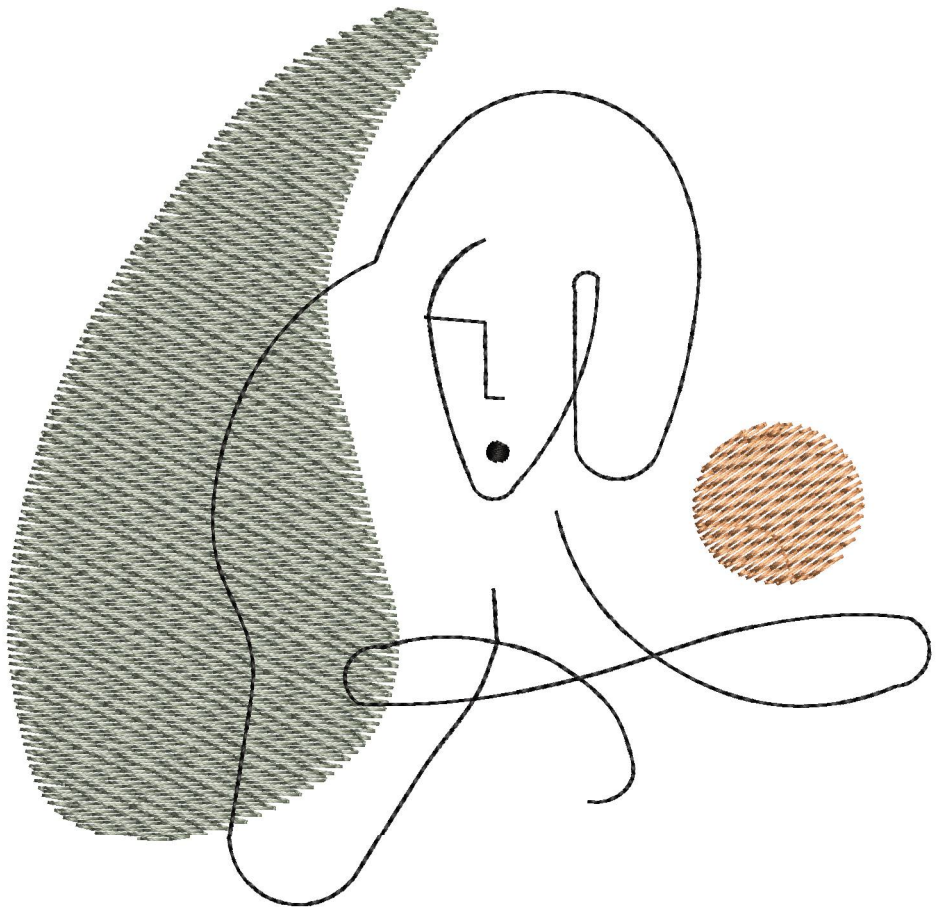
Stitches: 3,764  
Height: 123.7 mm  
Width: 127.1 mm  
Colors: 3  
Colorway: Colorway 1  
Zoom: 0.96

**z digitizing**  
support@zdigitizing.com  
+1 (213) 788-6748

Machine format: Tajima  
Color changes: 2  
Stops: 3  
Trims: 4  
Left: 63.6 mm  
Right: 63.6 mm  
Up: 61.9 mm  
Down: 61.9 mm  
EndX: 0.0 mm  
EndY: 0.0 mm  
Area: 15727.1 mm<sup>2</sup>  
Max stitch: 6.4 mm  
Min stitch: 0.3 mm  
Max jump: 6.5 mm

Stop Sequence:

#	N#	Color	St.	Code	Name	Chart
1.	3		2,348	1392	Silver Sage	Madeira Classic 40
2.	2		2,644	1226	Amber	Madeira Classic 40
3.	1		3,762	1000	Black	Madeira Classic 40



# Color Film

Wilcom EmbroideryStudio - Designing

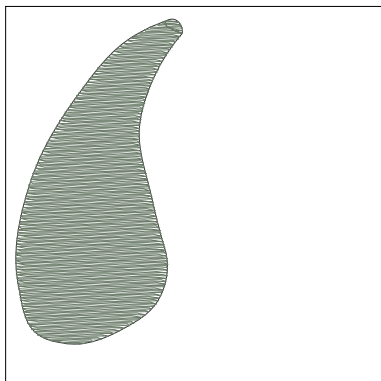
## \*GIRL AF 5X5\*

Design: **Girl AF 5x5**

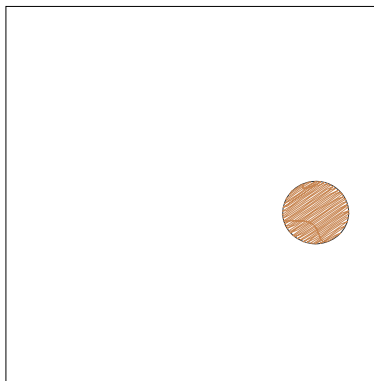
Title:

Stitches: 3,764  
Height: 123.7 mm  
Width: 127.1 mm  
Colors: 3  
Colorway: Colorway 1  
Zoom: 0.37

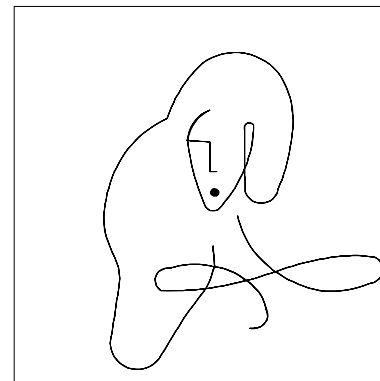
**z digitizing**  
support@zdigitizing.com  
+1 (213) 788-6748



Stop #: 1  
Element:  
Code: 1392  
Name: Silver Sage  
Chart: Madeira Classic 40  
Stitches: 2,348  
Thread used: 15.97m



Stop #: 2  
Element:  
Code: 1226  
Name: Amber  
Chart: Madeira Classic 40  
Stitches: 296  
Thread used: 1.79m



Stop #: 3  
Element:  
Code: 1000  
Name: Black  
Chart: Madeira Classic 40  
Stitches: 1,118  
Thread used: 4.88m