

Production Worksheet

Wilcom EmbroideryStudio - Designing

GIRL FACE 3 5X5

Design: **Girl Face 3 5x5**





Title:

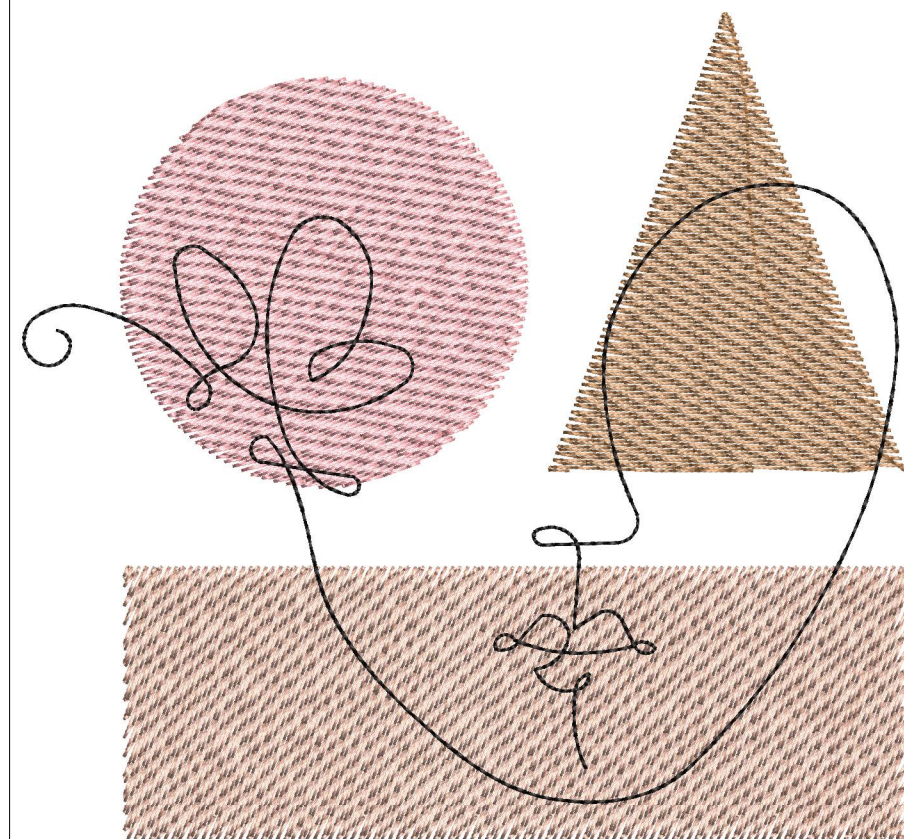
Stitches: 6,361
Height: 119.0 mm
Width: 127.0 mm
Colors: 4
Colorway: Colorway 1
Zoom: 0.92

z digitizing
support@zdigitizing.com
+1 (213) 788-6748

Machine format: Tajima
Color changes: 3
Stops: 4
Trims: 4
Left: 63.5 mm
Right: 63.5 mm
Up: 59.5 mm
Down: 59.5 mm
EndX: 0.0 mm
EndY: 0.0 mm
Area: 15119.9 mm²
Max stitch: 6.9 mm
Min stitch: 0.4 mm
Max jump: 7.0 mm

Stop Sequence:

#	N#	Color	St.	Code	Name	Chart
1.	3		2,528	1056	Golden Oak	Madeira Classic 40
2.	2		3,569	1056	Golden Oak	Madeira Classic 40
3.	4		5,102	1315	Pink Grapefruit	Madeira Classic 40
4.	1		6,359	1000	Black	Madeira Classic 40



Color Film

Wilcom EmbroideryStudio - Designing

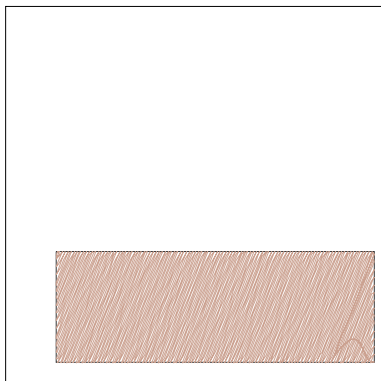
GIRL FACE 3 5X5

Design: **Girl Face 3 5x5**

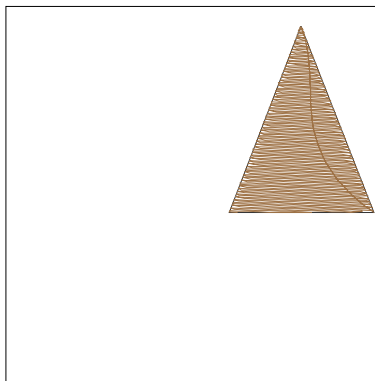
Title:

Stitches: 6,361
Height: 119.0 mm
Width: 127.0 mm
Colors: 4
Colorway: Colorway 1
Zoom: 0.37

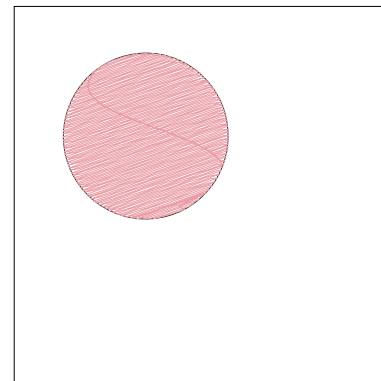
z digitizing
support@zdigitizing.com
+1 (213) 788-6748



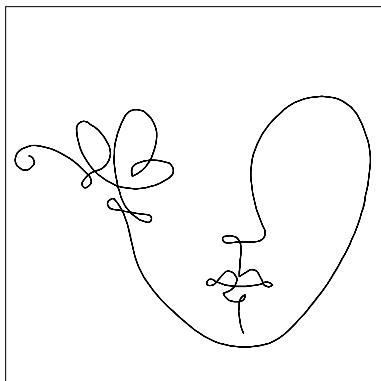
Stop #: 1
Element:
Code: 1056
Name: Golden Oak
Chart: Madeira Classic 40
Stitches: 2,528
Thread used: 17.24m



Stop #: 2
Element:
Code: 1056
Name: Golden Oak
Chart: Madeira Classic 40
Stitches: 1,041
Thread used: 6.85m



Stop #: 3
Element:
Code: 1315
Name: Pink Grapefruit
Chart: Madeira Classic 40
Stitches: 1,533
Thread used: 10.57m



Stop #: 4
Element:
Code: 1000
Name: Black
Chart: Madeira Classic 40
Stitches: 1,257
Thread used: 5.12m