

Production Worksheet

Wilcom EmbroideryStudio - Designing

GIRL FACE AW 4X4

Design: **Girl Face Aw 4x4**



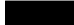
Title:

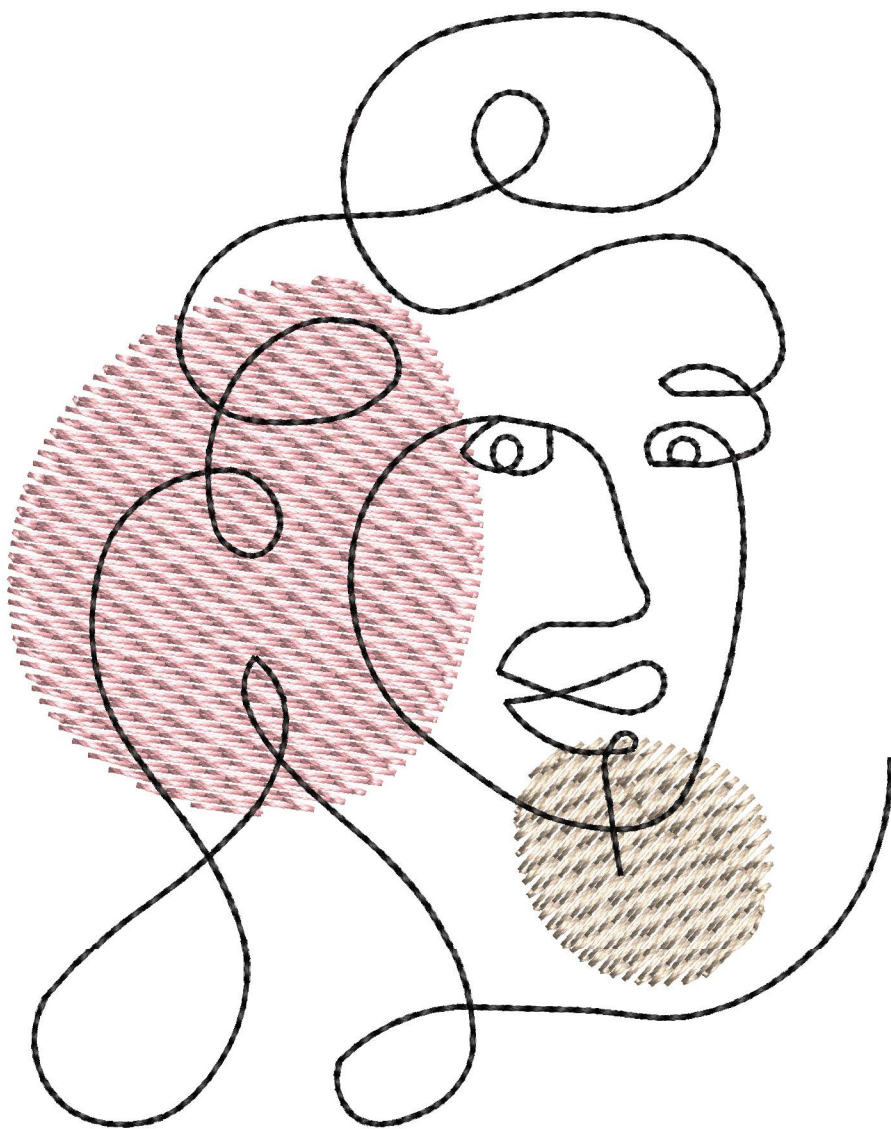
Stitches: 2,590
Height: 94.9 mm
Width: 75.4 mm
Colors: 3
Colorway: Colorway 1
Zoom: 1.55

z digitizing
support@zdigitizing.com
+1 (213) 788-6748

Machine format: Tajima
Color changes: 2
Stops: 3
Trims: 3
Left: 37.7 mm
Right: 37.7 mm
Up: 47.5 mm
Down: 47.5 mm
EndX: 0.0 mm
EndY: 0.0 mm
Area: 7160.0 mm²
Max stitch: 6.4 mm
Min stitch: 0.4 mm
Max jump: 6.5 mm

Stop Sequence:

#	N#	Color	St.	Code	Name	Chart
1.	3		849	1014	Bermuda Sand	Madeira Classic 40
2.	2		1,115	1082	Ivory	Madeira Classic 40
3.	1		2,588	1000	Black	Madeira Classic 40



Color Film

Wilcom EmbroideryStudio - Designing

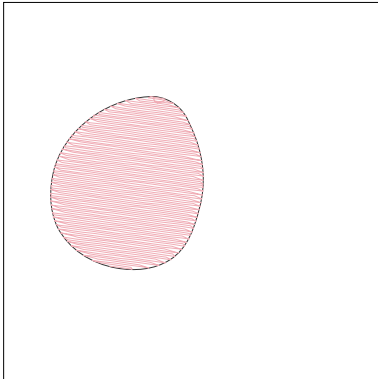
GIRL FACE AW 4X4

Design: **Girl Face Aw 4x4**

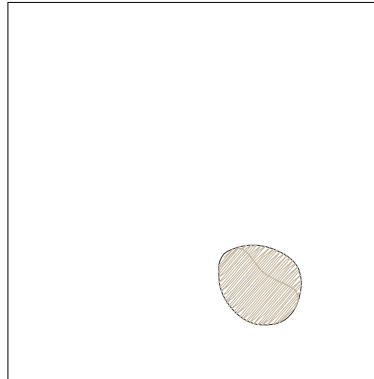
Title:

Stitches: 2,590
Height: 94.9 mm
Width: 75.4 mm
Colors: 3
Colorway: Colorway 1
Zoom: 0.50

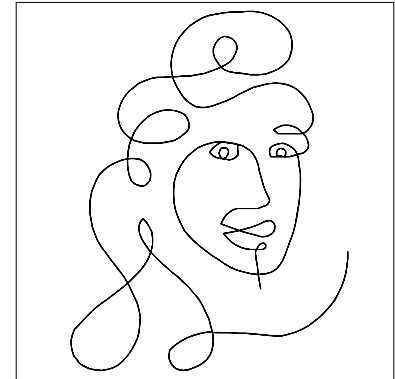
z digitizing
support@zdigitizing.com
+1 (213) 788-6748



Stop #: 1
Element:
Code: 1014
Name: Bermuda Sand
Chart: Madeira Classic 40
Stitches: 849
Thread used: 5.69m



Stop #: 2
Element:
Code: 1082
Name: Ivory
Chart: Madeira Classic 40
Stitches: 266
Thread used: 1.60m



Stop #: 3
Element:
Code: 1000
Name: Black
Chart: Madeira Classic 40
Stitches: 1,473
Thread used: 6.04m