

# Production Worksheet

Wilcom EmbroideryStudio - Designing

## \*GIRL FACE C 5X5\*

Design: **Girl Face C 5x5**





Title:

Stitches: 4,303  
Height: 126.9 mm  
Width: 95.7 mm  
Colors: 4  
Colorway: Colorway 1  
Zoom: 1.29

**z digitizing**  
support@zdigitizing.com  
+1 (213) 788-6748

Machine format: Tajima  
Color changes: 3  
Stops: 4  
Trims: 6  
Left: 47.8 mm  
Right: 47.8 mm  
Up: 63.5 mm  
Down: 63.5 mm  
EndX: 0.0 mm  
EndY: 0.0 mm  
Area: 12146.1 mm<sup>2</sup>  
Max stitch: 6.8 mm  
Min stitch: 0.4 mm  
Max jump: 6.8 mm

Stop Sequence:

#	N#	Color	St.	Code	Name	Chart
1.	3		1,098	1057	Caramel	Madeira Classic 40
2.	4		2,276	1120	Baby Pink	Madeira Classic 40
3.	2		4,106	1000	Black	Madeira Classic 40
4.	1		4,301	1081	Azalea	Madeira Classic 40



# Color Film

Wilcom EmbroideryStudio - Designing

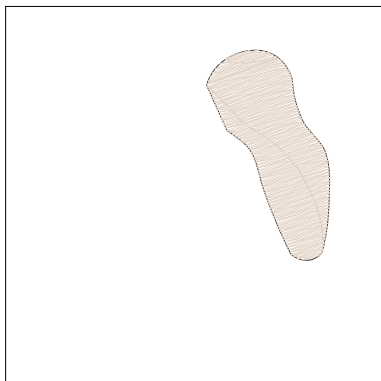
## \*GIRL FACE C 5X5\*

Design: **Girl Face C 5x5**

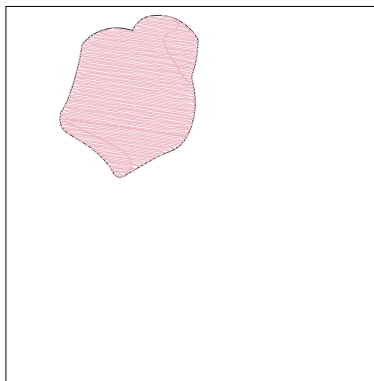
Title:

Stitches: 4,303  
Height: 126.9 mm  
Width: 95.7 mm  
Colors: 4  
Colorway: Colorway 1  
Zoom: 0.37

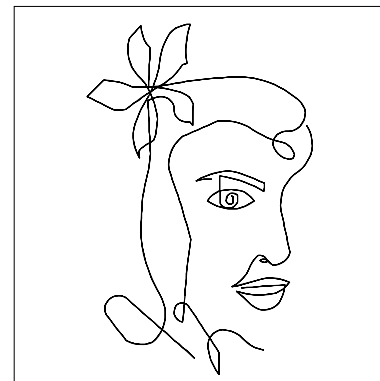
**z digitizing**  
support@zdigitizing.com  
+1 (213) 788-6748



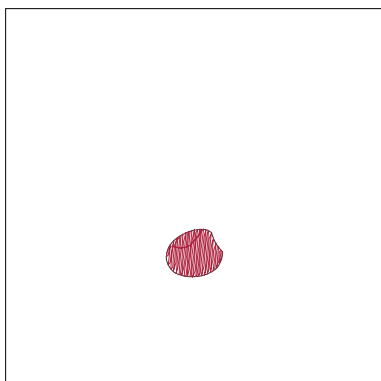
Stop #: 1  
Element:  
Code: 1057  
Name: Caramel  
Chart: Madeira Classic 40  
Stitches: 1,098  
Thread used: 7.10m



Stop #: 2  
Element:  
Code: 1120  
Name: Baby Pink  
Chart: Madeira Classic 40  
Stitches: 1,178  
Thread used: 7.95m



Stop #: 3  
Element:  
Code: 1000  
Name: Black  
Chart: Madeira Classic 40  
Stitches: 1,830  
Thread used: 7.66m



Stop #: 4  
Element:  
Code: 1081  
Name: Azalea  
Chart: Madeira Classic 40  
Stitches: 195  
Thread used: 1.13m