

Production Worksheet

Wilcom EmbroideryStudio - Designing

GIRL M 4X4

Design: **Girl M 4x4**

Title:

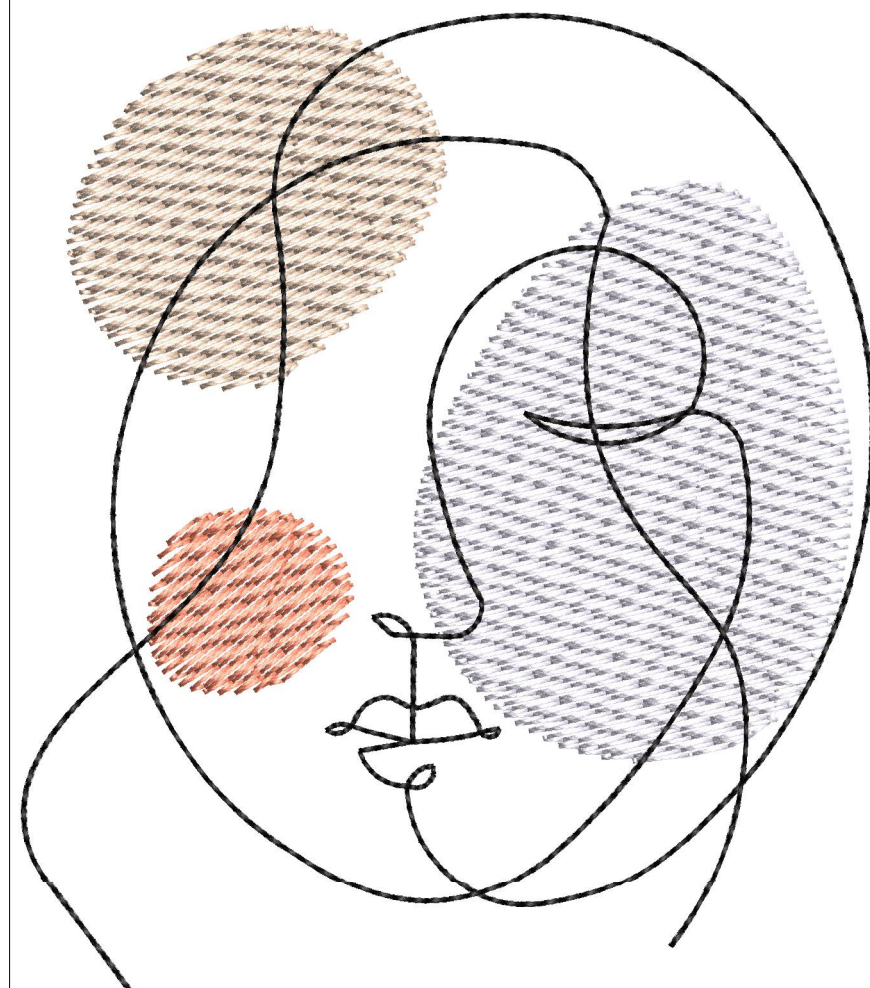
Stitches: 3,112
Height: 95.0 mm
Width: 82.6 mm
Colors: 4
Colorway: Colorway 1
Zoom: 1.36

z digitizing
support@zdigitizing.com
+1 (213) 788-6748

Machine format: Tajima
Color changes: 3
Stops: 4
Trims: 4
Left: 41.3 mm
Right: 41.3 mm
Up: 47.5 mm
Down: 47.5 mm
EndX: 0.0 mm
EndY: 0.0 mm
Area: 7847.8 mm²
Max stitch: 12.1 mm
Min stitch: 0.4 mm
Max jump: 6.9 mm

Stop Sequence:

#	N#	Color	St.	Code	Name	Chart
1.	2		1,094	1005	Fluorescent White	Madeira Classic 40
2.	4		1,656	1056	Golden Oak	Madeira Classic 40
3.	3		1,871	1152	Peach Tea	Madeira Classic 40
4.	1		3,110	1000	Black	Madeira Classic 40



Color Film

Wilcom EmbroideryStudio - Designing

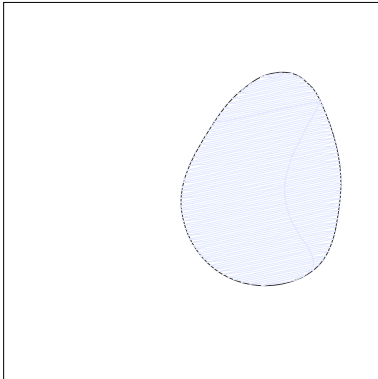
GIRL M 4X4

Design: **Girl M 4x4**

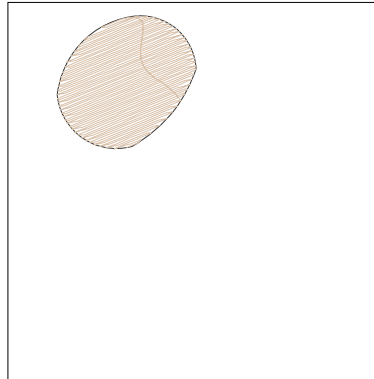
Title:

Stitches: 3,112
Height: 95.0 mm
Width: 82.6 mm
Colors: 4
Colorway: Colorway 1
Zoom: 0.50

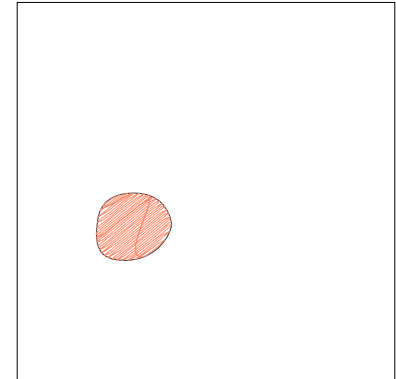

support@zdigitizing.com
+1 (213) 788-6748



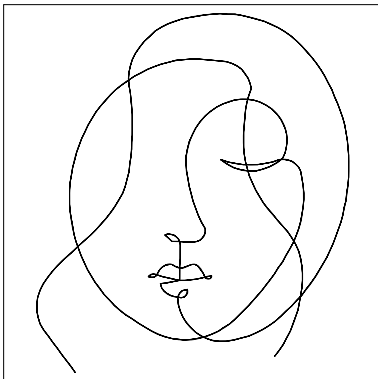
Stop #: 1
Element:
Code: 1005
Name: Fluorescent White
Chart: Madeira Classic 40
Stitches: 1,094
Thread used: 7.30m



Stop #: 2
Element:
Code: 1056
Name: Golden Oak
Chart: Madeira Classic 40
Stitches: 562
Thread used: 3.75m



Stop #: 3
Element:
Code: 1152
Name: Peach Tea
Chart: Madeira Classic 40
Stitches: 215
Thread used: 1.30m



Stop #: 4
Element:
Code: 1000
Name: Black
Chart: Madeira Classic 40
Stitches: 1,239
Thread used: 5.40m