

Production Worksheet

Wilcom EmbroideryStudio - Designing

GIRL WITH HAT 4X4

Design: **Girl With Hat 4x4**

Title:



Stitches: 3,347
Height: 95.0 mm
Width: 62.3 mm
Colors: 2
Colorway: Colorway 1
Zoom: 2.00

z digitizing
support@zdigitizing.com
+1 (213) 788-6748



Machine format: Tajima
Color changes: 1
Stops: 2
Trims: 7
Left: 31.1 mm
Right: 31.1 mm
Up: 47.5 mm
Down: 47.5 mm
EndX: 0.0 mm
EndY: 0.0 mm
Area: 5912.0 mm²
Max stitch: 6.3 mm
Min stitch: 0.1 mm
Max jump: 6.3 mm

Stop Sequence:

#	N#	Color	St.	Code	Name	Chart
1.	2		3,235	1000	Black	Madeira Classic 40
2.	1		3,345	1039	Brick Red	Madeira Classic 40

Color Film

Wilcom EmbroideryStudio - Designing

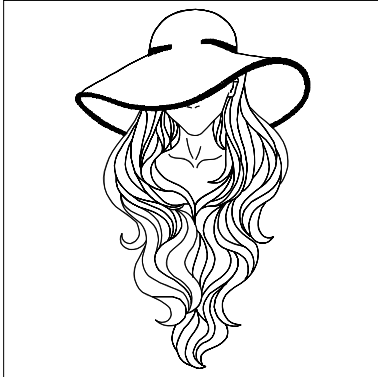
GIRL WITH HAT 4X4

Design: **Girl With Hat 4x4**

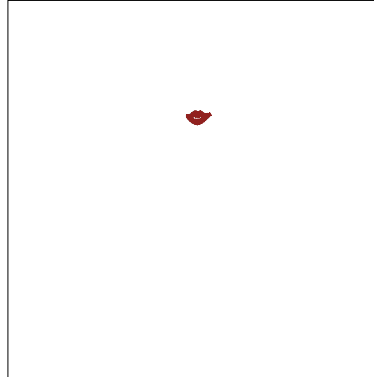
Title:

Stitches: 3,347
Height: 95.0 mm
Width: 62.3 mm
Colors: 2
Colorway: Colorway 1
Zoom: 0.50

 **digitizing**
support@zdigitizing.com
+1 (213) 788-6748



Stop #: 1
Element:
Code: 1000
Name: Black
Chart: Madeira Classic 40
Stitches: 3,235
Thread used: 12.70m



Stop #: 2
Element:
Code: 1039
Name: Brick Red
Chart: Madeira Classic 40
Stitches: 110
Thread used: 0.41m