

# Production Worksheet

Wilcom EmbroideryStudio - Designing

## \*GIRL WITH HAT 5X5\*

Design: **Girl With Hat 5x5**

Title:



Stitches: 4,170  
Height: 126.9 mm  
Width: 83.1 mm  
Colors: 2  
Colorway: Colorway 1  
Zoom: 1.50

**z digitizing**  
support@zdigitizing.com  
+1 (213) 788-6748



Machine format: Tajima  
Color changes: 1  
Stops: 2  
Trims: 7  
Left: 41.5 mm  
Right: 41.6 mm  
Up: 63.5 mm  
Down: 63.5 mm  
EndX: 0.0 mm  
EndY: 0.0 mm  
Area: 10550.3 mm<sup>2</sup>  
Max stitch: 6.3 mm  
Min stitch: 0.1 mm  
Max jump: 6.4 mm

Stop Sequence:

#	N#	Color	St.	Code	Name	Chart
1.	2		4,028	1000	Black	Madeira Classic 40
2.	1		4,168	1039	Brick Red	Madeira Classic 40

# Color Film

Wilcom EmbroideryStudio - Designing

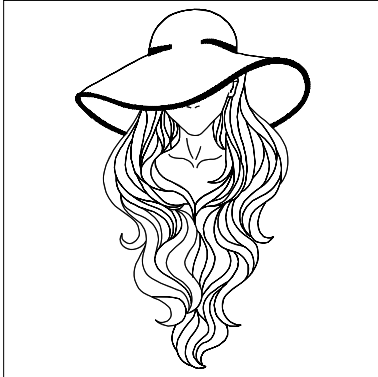
# \*GIRL WITH HAT 5X5\*

Design: **Girl With Hat 5x5**

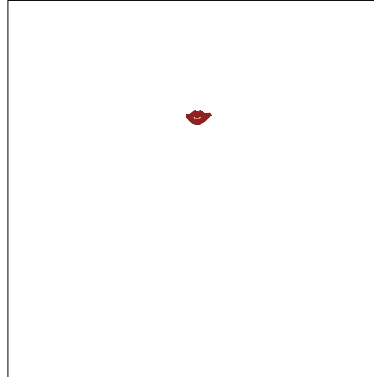
Title:

Stitches: 4,170  
Height: 126.9 mm  
Width: 83.1 mm  
Colors: 2  
Colorway: Colorway 1  
Zoom: 0.37

**z digitizing**  
support@zdigitizing.com  
+1 (213) 788-6748



Stop #: 1  
Element:  
Code: 1000  
Name: Black  
Chart: Madeira Classic 40  
Stitches: 4,028  
Thread used: 16.86m



Stop #: 2  
Element:  
Code: 1039  
Name: Brick Red  
Chart: Madeira Classic 40  
Stitches: 140  
Thread used: 0.58m