

Production Worksheet

Wilcom EmbroideryStudio - Designing

WOMAN FACE C 5X5

Design: **Woman Face C 5x5**

Title:

Stitches: 3,666
Height: 127.0 mm
Width: 95.1 mm
Colors: 1
Colorway: Colorway 1
Zoom: 1.36

z digitizing
support@zdigitizing.com
+1 (213) 788-6748

Machine format: Tajima
Color changes: 0
Stops: 1
Trims: 17
Left: 47.6 mm
Right: 47.6 mm
Up: 63.5 mm
Down: 63.5 mm
EndX: 0.0 mm
EndY: 0.0 mm
Area: 12081.2 mm²
Max stitch: 7.0 mm
Min stitch: 0.2 mm
Max jump: 7.0 mm

Stop Sequence:

| # | N# | Color | St. | Code | Name | Chart |
|----|----|-------|-------|------|-------|--------------------|
| 1. | 1 | ■ | 3,664 | 1000 | Black | Madeira Classic 40 |



Color Film

Wilcom EmbroideryStudio - Designing

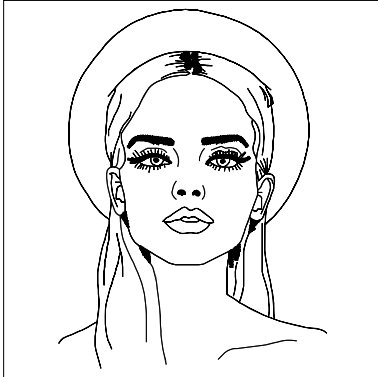
WOMAN FACE C 5X5

Design: **Woman Face C 5x5**

Title:

Stitches: 3,666
Height: 127.0 mm
Width: 95.1 mm
Colors: 1
Colorway: Colorway 1
Zoom: 0.37

 **digitizing**
support@zdigitizing.com
+1 (213) 788-6748



Stop #: 1

Element:

Code: 1000

Name: Black

Chart: Madeira Classic 40

Stitches: 3,664

Thread used: 14.49m