

Production Worksheet

Wilcom EmbroideryStudio - Designing

WOMAN FACE C 6X6

Design: **Woman Face C 6x6**

Title:

Stitches: 4,307
Height: 152.0 mm
Width: 113.9 mm
Colors: 1
Colorway: Colorway 1
Zoom: 1.14

z digitizing
support@zdigitizing.com
+1 (213) 788-6748

Machine format: Tajima
Color changes: 0
Stops: 1
Trims: 18
Left: 56.9 mm
Right: 56.9 mm
Up: 76.0 mm
Down: 76.0 mm
EndX: 0.0 mm
EndY: 0.0 mm
Area: 17304.1 mm²
Max stitch: 6.6 mm
Min stitch: 0.1 mm
Max jump: 6.6 mm

Stop Sequence:

#	N#	Color	St.	Code	Name	Chart
1.	1	█	4,305	1000	Black	Madeira Classic 40



Color Film

Wilcom EmbroideryStudio - Designing

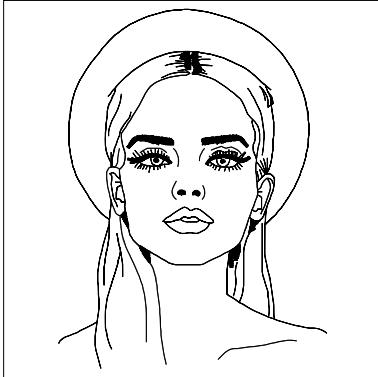
WOMAN FACE C 6X6

Design: **Woman Face C 6x6**

Title:

Stitches: 4,307
Height: 152.0 mm
Width: 113.9 mm
Colors: 1
Colorway: Colorway 1
Zoom: 0.31

z digitizing
support@zdigitizing.com
+1 (213) 788-6748



Stop #: 1

Element:

Code: 1000

Name: Black

Chart: Madeira Classic 40

Stitches: 4,305

Thread used: 17.53m