

# Production Worksheet

Wilcom EmbroideryStudio - Designing

## \*FISH H 3X3\*

Design: **Fish H 3x3**





Title:

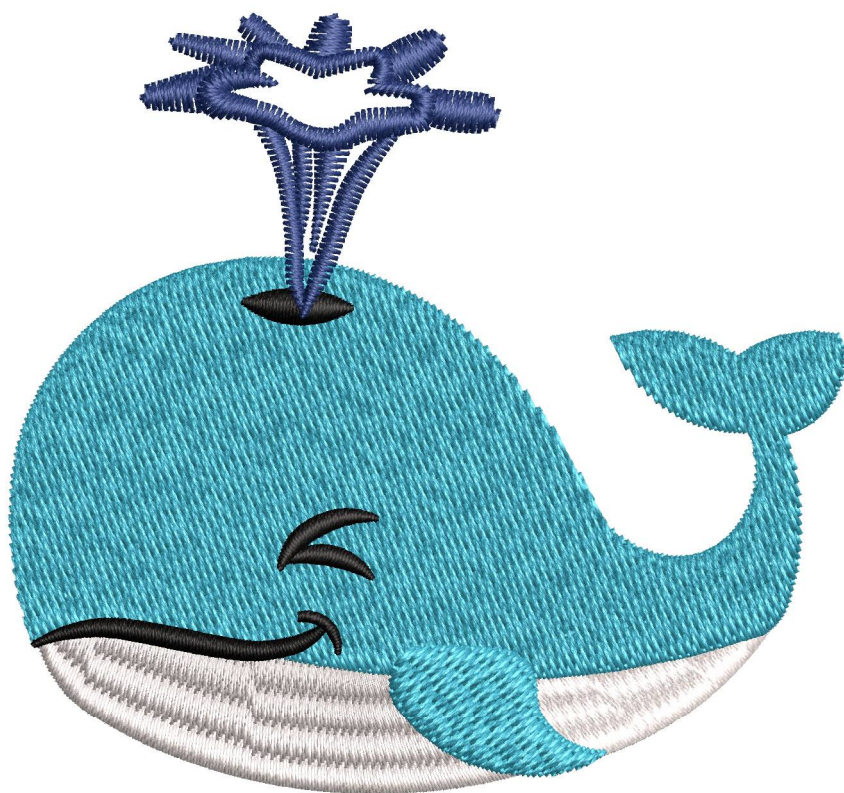
Stitches: 8,279  
Height: 71.6 mm  
Width: 76.5 mm  
Colors: 4  
Colorway: Colorway 1  
Zoom: 1.44

**z digitizing**  
support@zdigitizing.com  
+1 (213) 788-6748

Machine format: Tajima  
Color changes: 3  
Stops: 4  
Trims: 8  
Left: 38.2 mm  
Right: 38.2 mm  
Up: 35.8 mm  
Down: 35.8 mm  
EndX: 0.0 mm  
EndY: 0.0 mm  
Area: 5471.6 mm<sup>2</sup>  
Max stitch: 6.6 mm  
Min stitch: 0.2 mm  
Max jump: 6.6 mm

### Stop Sequence:

#	N#	Color	St.	Code	Name	Chart
1.	4		2,524	1003	White	Madeira Classic 40
2.	2		7,033	1094	Caribbean Blue	Madeira Classic 40
3.	3		7,530	1000	Black	Madeira Classic 40
4.	1		8,277	1466		Madeira Classic 40



# Color Film

Wilcom EmbroideryStudio - Designing

## \*FISH H 3X3\*

Design: **Fish H 3x3**

Title:

Stitches: 8,279

Height: 71.6 mm

Width: 76.5 mm

Colors: 4

Colorway: Colorway 1

Zoom: 0.62



Stop #: 1

Element:

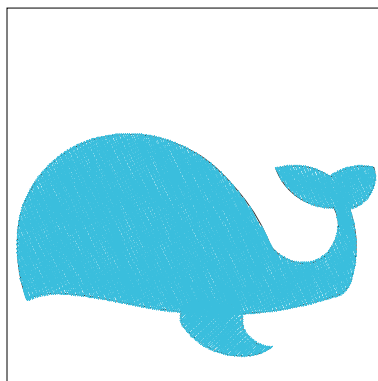
Code: 1003

Name: White

Chart: Madeira Classic 40

Stitches: 2,524

Thread used: 15.14m



Stop #: 2

Element:

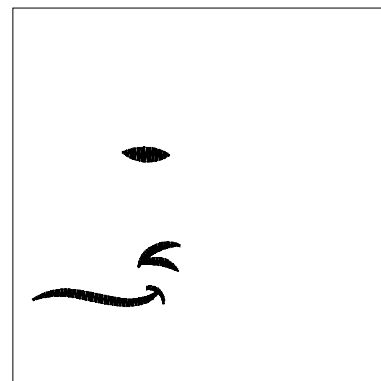
Code: 1094

Name: Caribbean Blue

Chart: Madeira Classic 40

Stitches: 4,509

Thread used: 28.95m



Stop #: 3

Element:

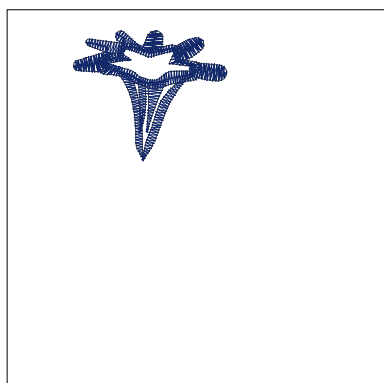
Code: 1000

Name: Black

Chart: Madeira Classic 40

Stitches: 497

Thread used: 2.03m



Stop #: 4

Element:

Code: 1466

Name:

Chart: Madeira Classic 40

Stitches: 747

Thread used: 3.53m