

Production Worksheet

Wilcom EmbroideryStudio - Designing

GIRL FACE A 5X5

Design: **Girl Face A 5x5**

Title:

Stitches: 4,833
Height: 127.2 mm
Width: 83.5 mm
Colors: 1
Colorway: Colorway 1
Zoom: 1.55

z digitizing
support@zdigitizing.com
+1 (213) 788-6748



Machine format: Tajima
Color changes: 0
Stops: 1
Trims: 8
Left: 41.8 mm
Right: 41.7 mm
Up: 63.7 mm
Down: 63.6 mm
EndX: 0.0 mm
EndY: 0.0 mm
Area: 10626.3 mm²
Max stitch: 6.5 mm
Min stitch: 0.3 mm
Max jump: 6.5 mm

Stop Sequence:

#	N#	Color	St.	Code	Name	Chart
1.	1	█	4,831	1000	Black	Madeira Classic 40

Color Film

Wilcom EmbroideryStudio - Designing

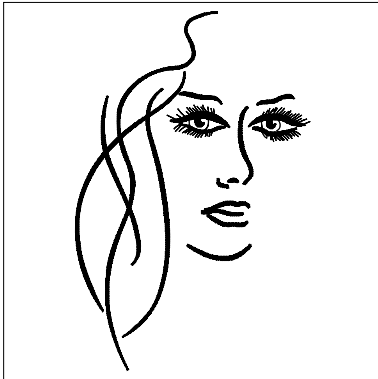
GIRL FACE A 5X5

Design: **Girl Face A 5x5**

Title:

Stitches: 4,833
Height: 127.2 mm
Width: 83.5 mm
Colors: 1
Colorway: Colorway 1
Zoom: 0.37

 **digitizing**
support@zdigitizing.com
+1 (213) 788-6748



Stop #: 1

Element:

Code: 1000

Name: Black

Chart: Madeira Classic 40

Stitches: 4,831

Thread used: 19.16m