

Production Worksheet

Wilcom EmbroideryStudio - Designing

GIRL FACE E 6X6

Design: **Girl Face E 6x6**

Title:

Stitches: 3,687
Height: 152.5 mm
Width: 66.1 mm
Colors: 1
Colorway: Colorway 1
Zoom: 1.56

z digitizing
support@zdigitizing.com
+1 (213) 788-6748

Machine format: Tajima
Color changes: 0
Stops: 1
Trims: 12
Left: 33.0 mm
Right: 33.0 mm
Up: 76.2 mm
Down: 76.3 mm
EndX: 0.0 mm
EndY: 0.0 mm
Area: 10076.6 mm²
Max stitch: 6.9 mm
Min stitch: 0.3 mm
Max jump: 7.0 mm

Stop Sequence:

#	N#	Color	St.	Code	Name	Chart
1.	1	█	3,685	1000	Black	Madeira Classic 40



Color Film

Wilcom EmbroideryStudio - Designing

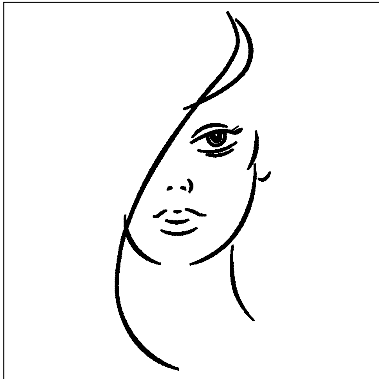
GIRL FACE E 6X6

Design: **Girl Face E 6x6**

Title:

Stitches: 3,687
Height: 152.5 mm
Width: 66.1 mm
Colors: 1
Colorway: Colorway 1
Zoom: 0.31

z digitizing
support@zdigitizing.com
+1 (213) 788-6748



Stop #: 1

Element:

Code: 1000

Name: Black

Chart: Madeira Classic 40

Stitches: 3,685

Thread used: 14.88m