

# Production Worksheet

Wilcom EmbroideryStudio - Designing

**\*SISTERS DAY A 5X5\***

Design: **Sisters Day A 5x5**

Title:

Stitches: 12,668  
 Height: 127.4 mm  
 Width: 90.5 mm  
 Colors: 8  
 Colorway: Colorway 1  
 Zoom: 1.21

**z digitizing**  
 support@zdigitizing.com  
 +1 (213) 788-6748

Machine format: Tajima  
 Color changes: 18  
 Stops: 19  
 Trims: 38  
 Left: 45.3 mm  
 Right: 45.3 mm  
 Up: 63.7 mm  
 Down: 63.7 mm  
 EndX: 0.0 mm  
 EndY: 0.0 mm  
 Area: 11534.4 mm<sup>2</sup>  
 Max stitch: 11.1 mm  
 Min stitch: 0.3 mm  
 Max jump: 6.9 mm

Stop Sequence:

#	N#	Color	St.	Code	Name	Chart
1.	6		726	1361	Battleship	Madeira Classic 40
2.	5		1,102	1317	Blush Pink	Madeira Classic 40
3.	6		2,097	1361	Battleship	Madeira Classic 40
4.	7		2,480	1000	Black	Madeira Classic 40
5.	5		2,731	1317	Blush Pink	Madeira Classic 40
6.	7		2,923	1000	Black	Madeira Classic 40
7.	1		3,559	1029	Blue Jay	Madeira Classic 40
8.	3		3,693	1277	Blueberry Smash	Madeira Classic 40
9.	5		4,221	1317	Blush Pink	Madeira Classic 40
10.	4		4,793	1310	Magenta	Madeira Classic 40
11.	7		5,207	1000	Black	Madeira Classic 40
12.	5		5,419	1317	Blush Pink	Madeira Classic 40
13.	7		5,617	1000	Black	Madeira Classic 40
14.	2		6,159	1031	Frosted Lavender	Madeira Classic 40
15.	4		6,652	1310	Magenta	Madeira Classic 40
16.	2		7,664	1031	Frosted Lavender	Madeira Classic 40
17.	8		8,114	1003	White	Madeira Classic 40
18.	7		11,696	1000	Black	Madeira Classic 40
19.	1		12,666	1029	Blue Jay	Madeira Classic 40

HAPPY  
**Sister's**



# Color Film

Wilcom EmbroideryStudio - Designing

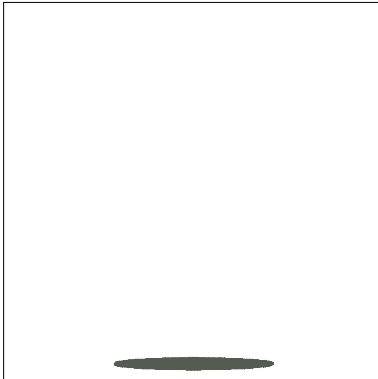
## \*SISTERS DAY A 5X5\*

Design: **Sisters Day A 5x5**

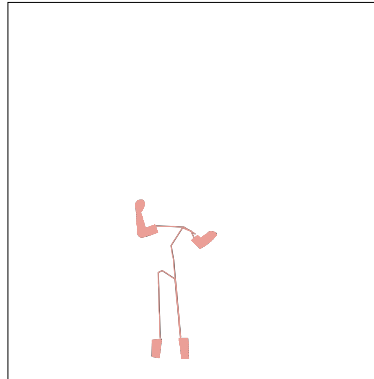
Title:

Stitches: 12,668  
Height: 127.4 mm  
Width: 90.5 mm  
Colors: 8  
Colorway: Colorway 1  
Zoom: 0.37

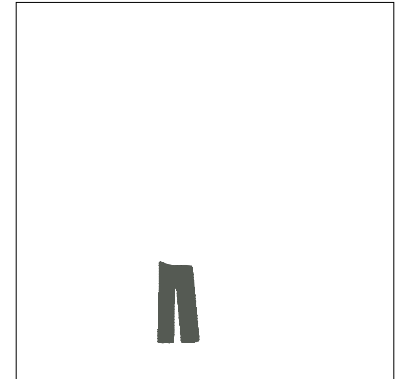
  
support@zdigitizing.com  
+1 (213) 788-6748



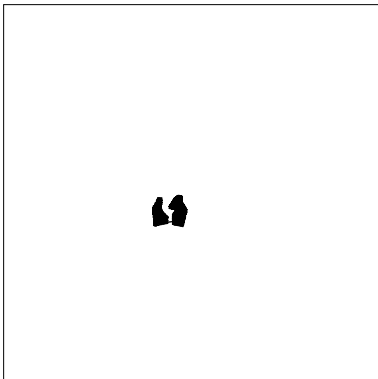
Stop #: 1  
Element:  
Code: 1361  
Name: Battleship  
Chart: Madeira Classic 40  
Stitches: 726  
Thread used: 3.38m



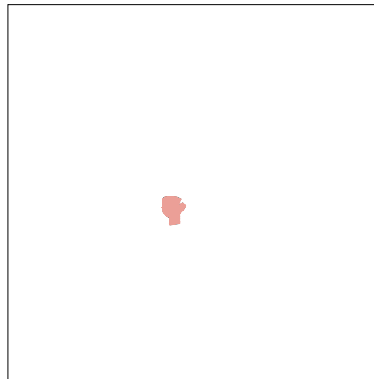
Stop #: 2  
Element:  
Code: 1317  
Name: Blush Pink  
Chart: Madeira Classic 40  
Stitches: 376  
Thread used: 2.08m



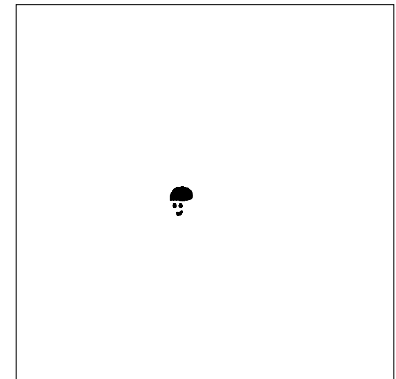
Stop #: 3  
Element:  
Code: 1361  
Name: Battleship  
Chart: Madeira Classic 40  
Stitches: 995  
Thread used: 5.44m



Stop #: 4  
Element:  
Code: 1000  
Name: Black  
Chart: Madeira Classic 40  
Stitches: 383  
Thread used: 1.73m



Stop #: 5  
Element:  
Code: 1317  
Name: Blush Pink  
Chart: Madeira Classic 40  
Stitches: 251  
Thread used: 1.19m



Stop #: 6  
Element:  
Code: 1000  
Name: Black  
Chart: Madeira Classic 40  
Stitches: 192  
Thread used: 0.80m

# Color Film

Wilcom EmbroideryStudio - Designing

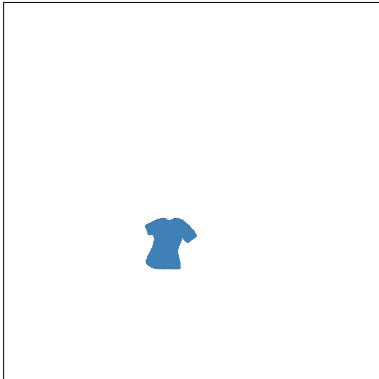
## \*SISTERS DAY A 5X5\*

Design: **Sisters Day A 5x5**

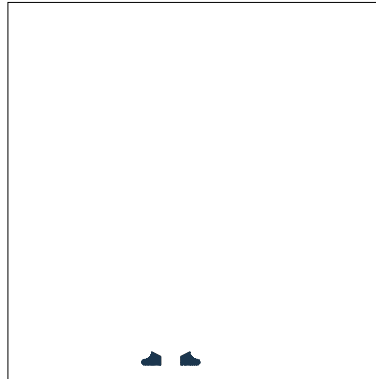
Title:

Stitches: 12,668  
Height: 127.4 mm  
Width: 90.5 mm  
Colors: 8  
Colorway: Colorway 1  
Zoom: 0.37

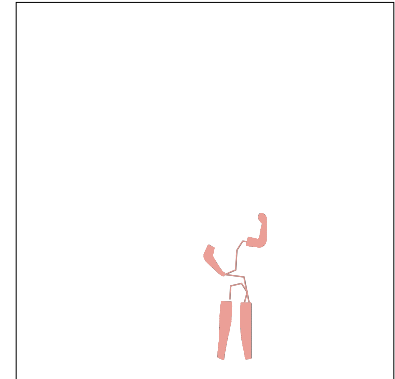
  
support@zdigitizing.com  
+1 (213) 788-6748



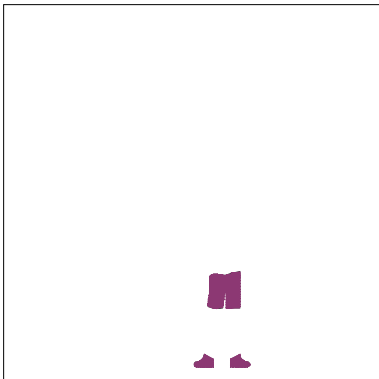
Stop #: 7  
Element:  
Code: 1029  
Name: Blue Jay  
Chart: Madeira Classic 40  
Stitches: 636  
Thread used: 3.59m



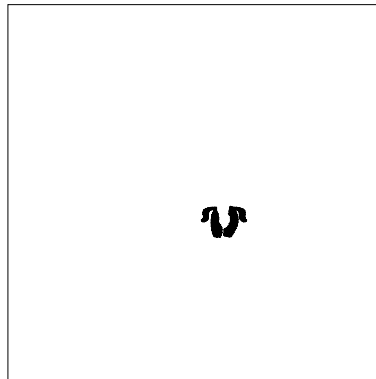
Stop #: 8  
Element:  
Code: 1277  
Name: Blueberry Smash  
Chart: Madeira Classic 40  
Stitches: 134  
Thread used: 0.77m



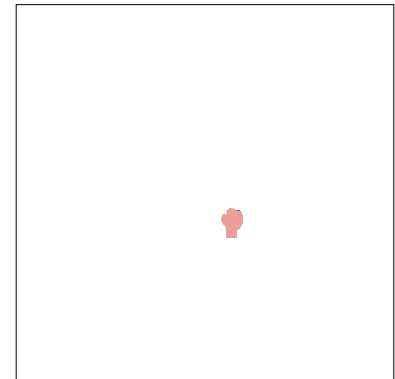
Stop #: 9  
Element:  
Code: 1317  
Name: Blush Pink  
Chart: Madeira Classic 40  
Stitches: 528  
Thread used: 3.08m



Stop #: 10  
Element:  
Code: 1310  
Name: Magenta  
Chart: Madeira Classic 40  
Stitches: 572  
Thread used: 3.13m



Stop #: 11  
Element:  
Code: 1000  
Name: Black  
Chart: Madeira Classic 40  
Stitches: 414  
Thread used: 1.73m



Stop #: 12  
Element:  
Code: 1317  
Name: Blush Pink  
Chart: Madeira Classic 40  
Stitches: 212  
Thread used: 1.02m

# Color Film

Wilcom EmbroideryStudio - Designing

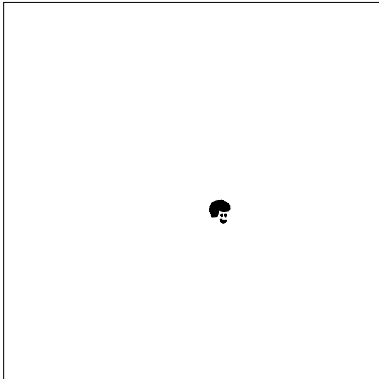
## \*SISTERS DAY A 5X5\*

Design: **Sisters Day A 5x5**

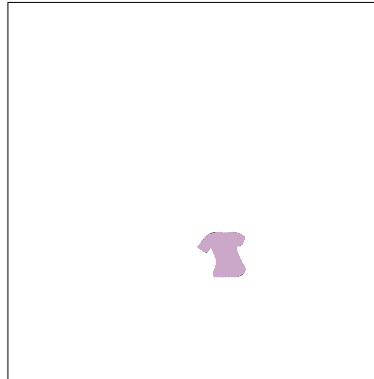
Title:

Stitches: 12,668  
Height: 127.4 mm  
Width: 90.5 mm  
Colors: 8  
Colorway: Colorway 1  
Zoom: 0.37

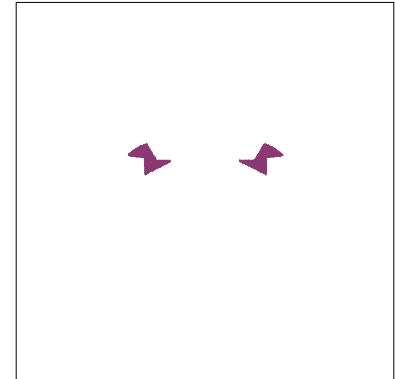
  
support@zdigitizing.com  
+1 (213) 788-6748



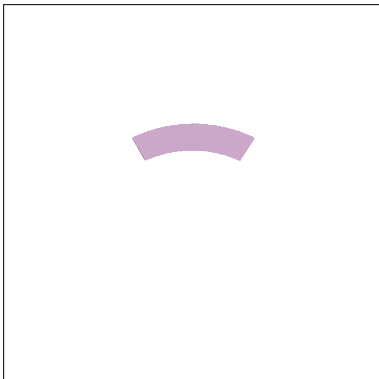
Stop #: 13  
Element:  
Code: 1000  
Name: Black  
Chart: Madeira Classic 40  
Stitches: 198  
Thread used: 0.79m



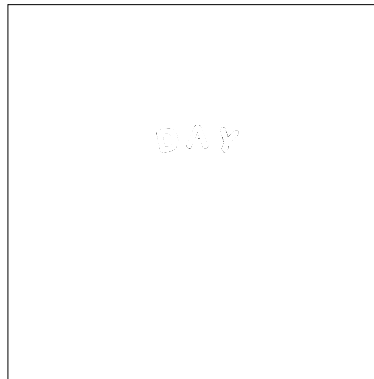
Stop #: 14  
Element:  
Code: 1031  
Name: Frosted Lavender  
Chart: Madeira Classic 40  
Stitches: 542  
Thread used: 2.95m



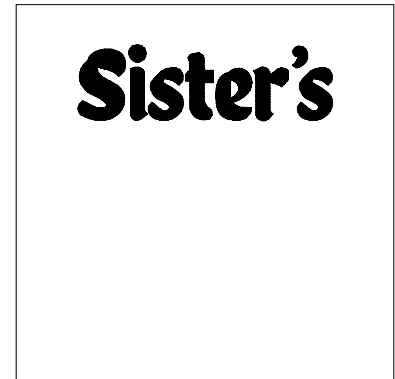
Stop #: 15  
Element:  
Code: 1310  
Name: Magenta  
Chart: Madeira Classic 40  
Stitches: 493  
Thread used: 2.21m



Stop #: 16  
Element:  
Code: 1031  
Name: Frosted Lavender  
Chart: Madeira Classic 40  
Stitches: 1,012  
Thread used: 5.78m



Stop #: 17  
Element:  
Code: 1003  
Name: White  
Chart: Madeira Classic 40  
Stitches: 450  
Thread used: 1.88m



Stop #: 18  
Element:  
Code: 1000  
Name: Black  
Chart: Madeira Classic 40  
Stitches: 3,582  
Thread used: 28.96m

**Color Film**

Wilcom EmbroideryStudio - Designing

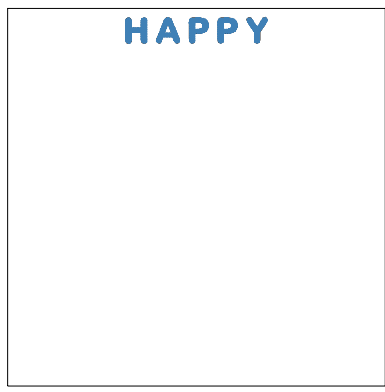
**\*SISTERS DAY A 5X5\***

Design: **Sisters Day A 5x5**

Title:

Stitches: 12,668  
Height: 127.4 mm  
Width: 90.5 mm  
Colors: 8  
Colorway: Colorway 1  
Zoom: 0.37

**z digitizing**  
support@zdigitizing.com  
**+1 (213) 788-6748**



Stop #: 19  
Element:  
Code: 1029  
Name: Blue Jay  
Chart: Madeira Classic 40  
Stitches: 970  
Thread used: 4.15m