

Production Worksheet

Wilcom EmbroideryStudio - Designing

SPIDER A 5X5

Design: Spider A 5x5





Title:

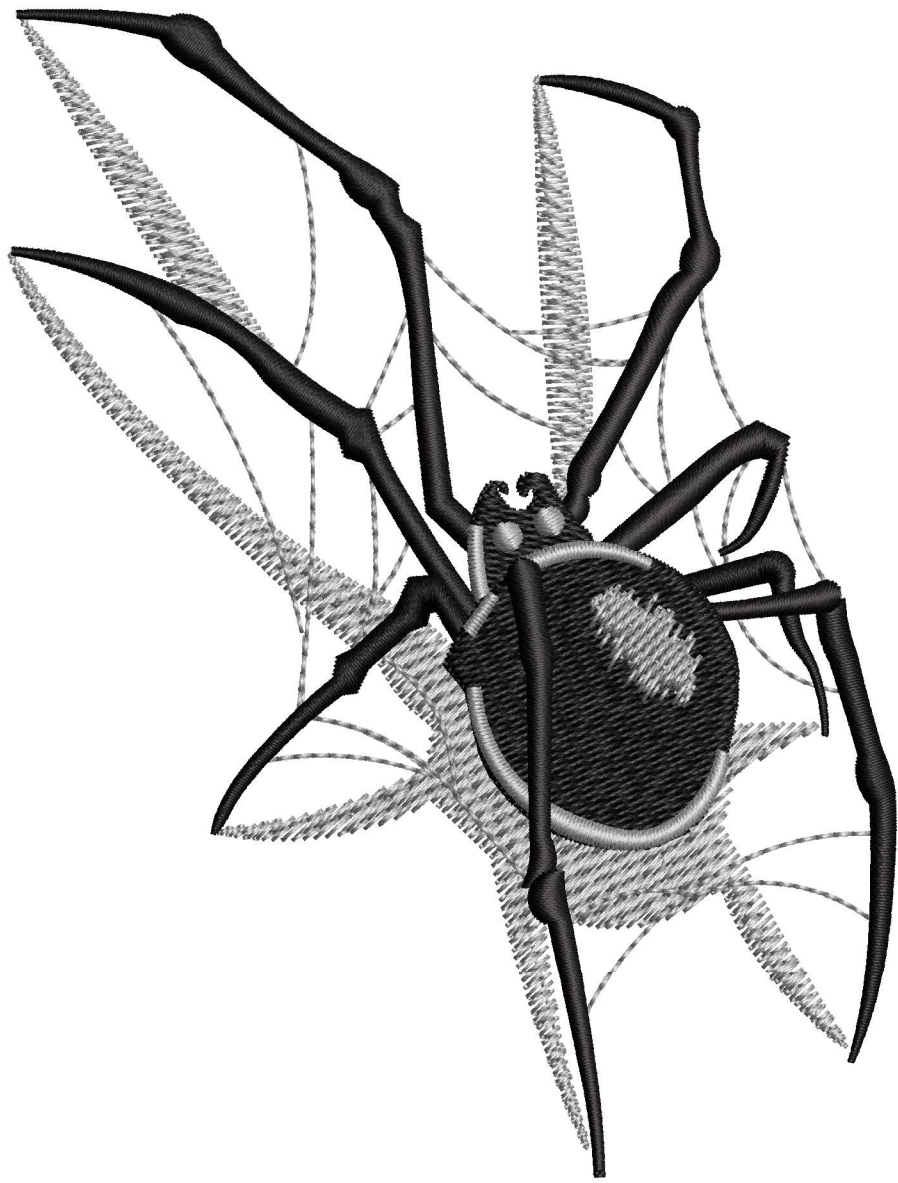
Stitches: 8,640
Height: 127.2 mm
Width: 96.9 mm
Colors: 2
Colorway: Colorway 1
Zoom: 1.21

z digitizing
support@zdigitizing.com
+1 (213) 788-6748

Machine format: Tajima
Color changes: 3
Stops: 4
Trims: 9
Left: 48.4 mm
Right: 48.5 mm
Up: 63.7 mm
Down: 63.5 mm
EndX: 0.0 mm
EndY: 0.0 mm
Area: 12323.5 mm²
Max stitch: 6.7 mm
Min stitch: 0.3 mm
Max jump: 6.7 mm

Stop Sequence:

#	N#	Color	St.	Code	Name	Chart
1.	1		2,803	1118	Overcast Gray	Madeira Classic 40
2.	2		7,576	1000	Black	Madeira Classic 40
3.	1		8,160	1118	Overcast Gray	Madeira Classic 40
4.	2		8,638	1000	Black	Madeira Classic 40



Color Film

Wilcom EmbroideryStudio - Designing

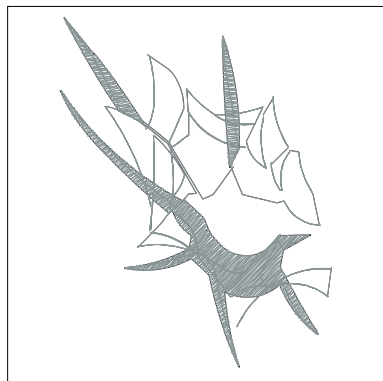
SPIDER A 5X5

Design: **Spider A 5x5**

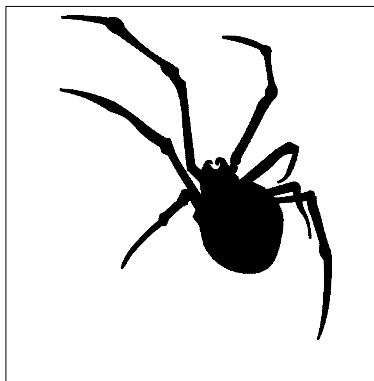
Title:

Stitches: 8,640
Height: 127.2 mm
Width: 96.9 mm
Colors: 2
Colorway: Colorway 1
Zoom: 0.37

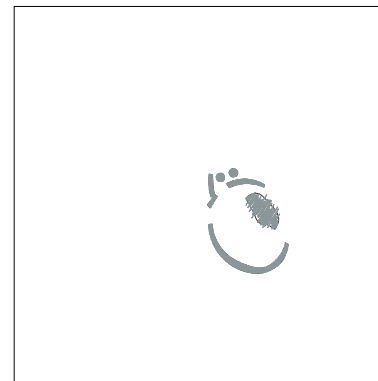
z digitizing
support@zdigitizing.com
+1 (213) 788-6748



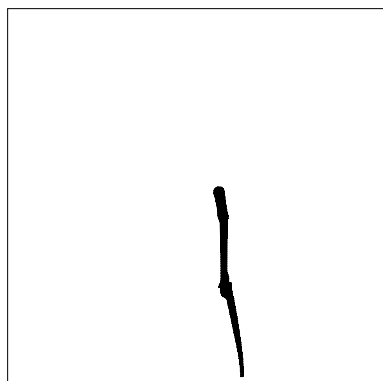
Stop #: 1
Element:
Code: 1118
Name: Overcast Gray
Chart: Madeira Classic 40
Stitches: 2,803
Thread used: 13.38m



Stop #: 2
Element:
Code: 1000
Name: Black
Chart: Madeira Classic 40
Stitches: 4,773
Thread used: 27.92m



Stop #: 3
Element:
Code: 1118
Name: Overcast Gray
Chart: Madeira Classic 40
Stitches: 584
Thread used: 2.67m



Stop #: 4
Element:
Code: 1000
Name: Black
Chart: Madeira Classic 40
Stitches: 478
Thread used: 2.53m