

Production Worksheet

Wilcom EmbroideryStudio - Designing

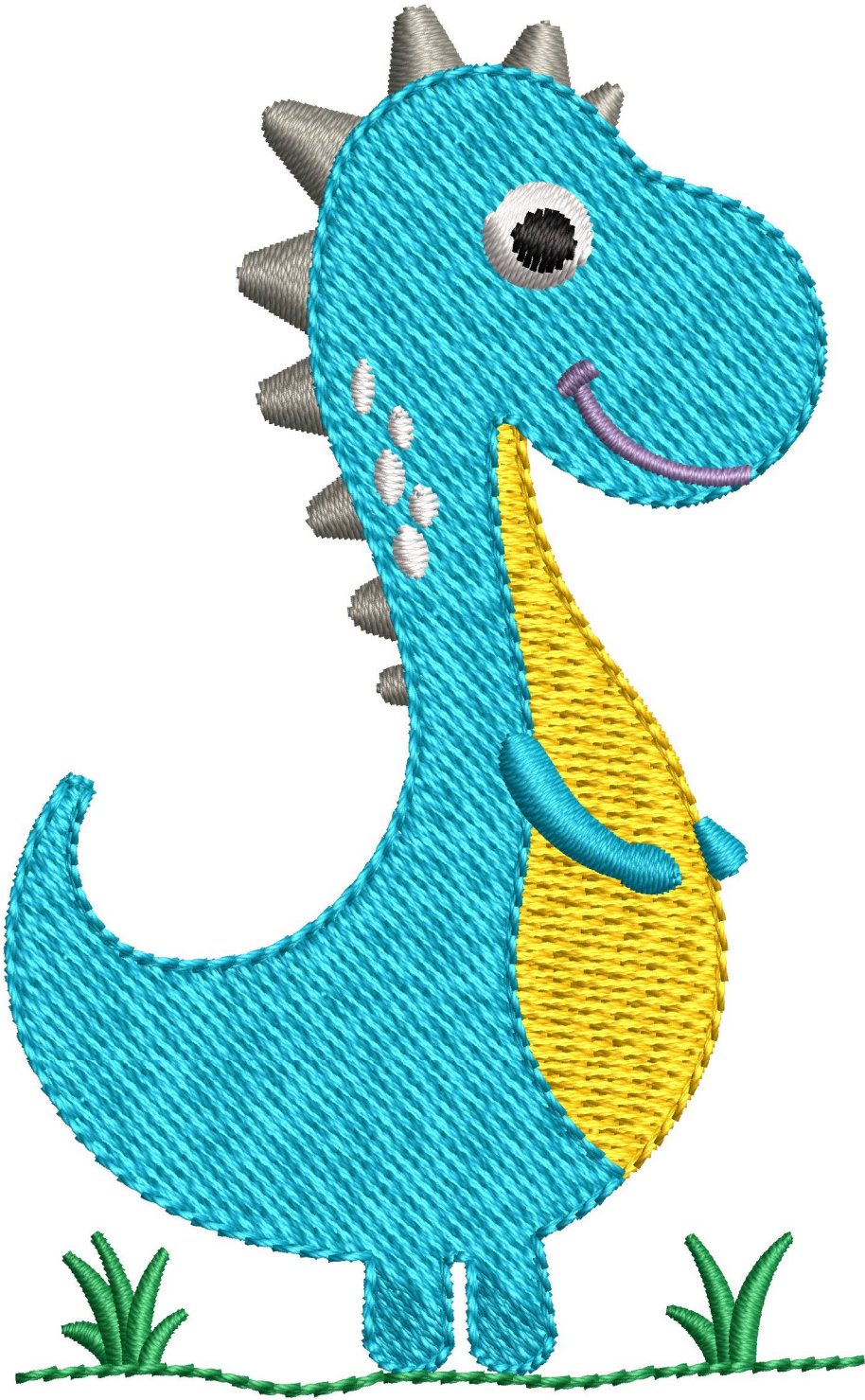
DRAGON A 3X3

Design: **Dragon A 3x3**

Title:

Stitches: 5,741
Height: 76.4 mm
Width: 47.2 mm
Colors: 7
Colorway: Colorway 1
Zoom: 2.54

z digitizing
support@zdigitizing.com
+1 (213) 788-6748



Machine format: Tajima
Color changes: 6
Stops: 7
Trims: 12
Left: 23.7 mm
Right: 23.5 mm
Up: 38.1 mm
Down: 38.3 mm
EndX: 0.0 mm
EndY: 0.0 mm
Area: 3608.3 mm²
Max stitch: 6.7 mm
Min stitch: 0.2 mm
Max jump: 6.7 mm

Stop Sequence:

#	N#	Color	St.	Code	Name	Chart
1.	5	Grey	396	1463		Madeira Classic 40
2.	2	Yellow	1,402	1068	Canary	Madeira Classic 40
3.	3	Blue	4,922	1095	Larimar	Madeira Classic 40
4.	6	White	5,085	1003	Cream White	Madeira Classic 40
5.	4	Black	5,115	1000	Black	Madeira Classic 40
6.	7	Purple	5,224	1032	Velvet Violet	Madeira Classic 40
7.	1	Green	5,739	1051	Bell Pepper	Madeira Classic 40

Color Film

Wilcom EmbroideryStudio - Designing

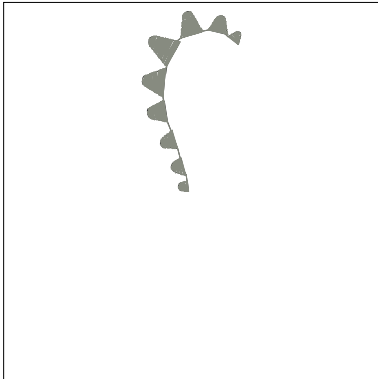
DRAGON A 3X3

Design: **Dragon A 3x3**

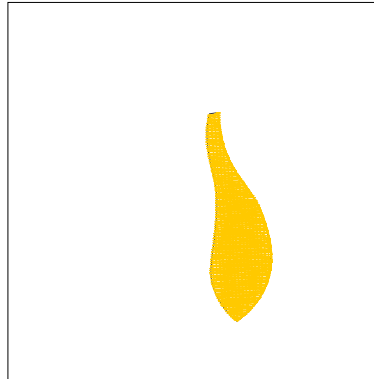
Title:

Stitches: 5,741
Height: 76.4 mm
Width: 47.2 mm
Colors: 7
Colorway: Colorway 1
Zoom: 0.62

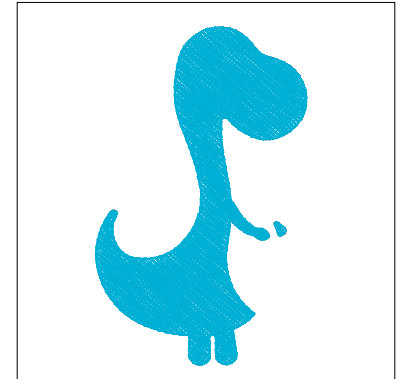
z digitizing
support@zdigitizing.com
+1 (213) 788-6748



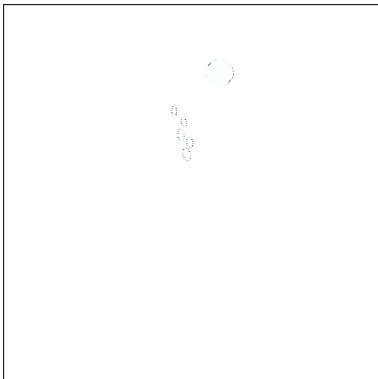
Stop #: 1
Element:
Code: 1463
Name:
Chart: Madeira Classic 40
Stitches: 396
Thread used: 2.23m



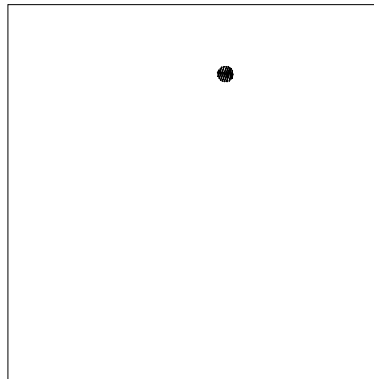
Stop #: 2
Element:
Code: 1068
Name: Canary
Chart: Madeira Classic 40
Stitches: 1,006
Thread used: 5.60m



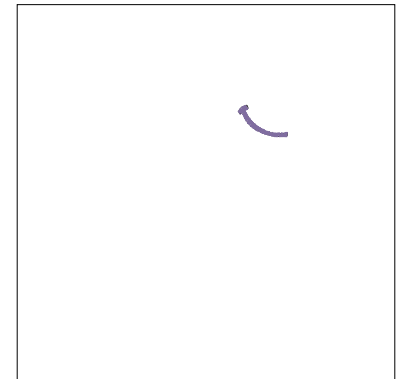
Stop #: 3
Element:
Code: 1095
Name: Larimar
Chart: Madeira Classic 40
Stitches: 3,520
Thread used: 20.45m



Stop #: 4
Element:
Code: 1003
Name: Cream White
Chart: Madeira Classic 40
Stitches: 163
Thread used: 0.82m



Stop #: 5
Element:
Code: 1000
Name: Black
Chart: Madeira Classic 40
Stitches: 30
Thread used: 0.13m



Stop #: 6
Element:
Code: 1032
Name: Velvet Violet
Chart: Madeira Classic 40
Stitches: 109
Thread used: 0.38m

Color Film

Wilcom EmbroideryStudio - Designing

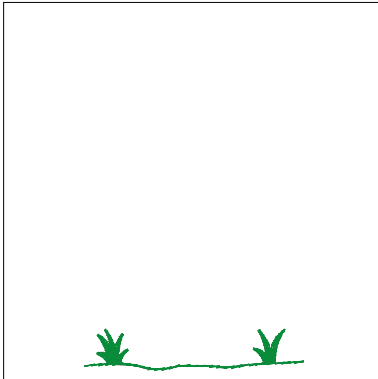
DRAGON A 3X3

Design: **Dragon A 3x3**

Title:

Stitches: 5,741
Height: 76.4 mm
Width: 47.2 mm
Colors: 7
Colorway: Colorway 1
Zoom: 0.62

 **digitizing**
support@zdigitizing.com
+1 (213) 788-6748



Stop #: 7

Element:

Code: 1051

Name: Bell Pepper

Chart: Madeira Classic 40

Stitches: 515

Thread used: 1.94m