

Production Worksheet

Wilcom EmbroideryStudio - Designing

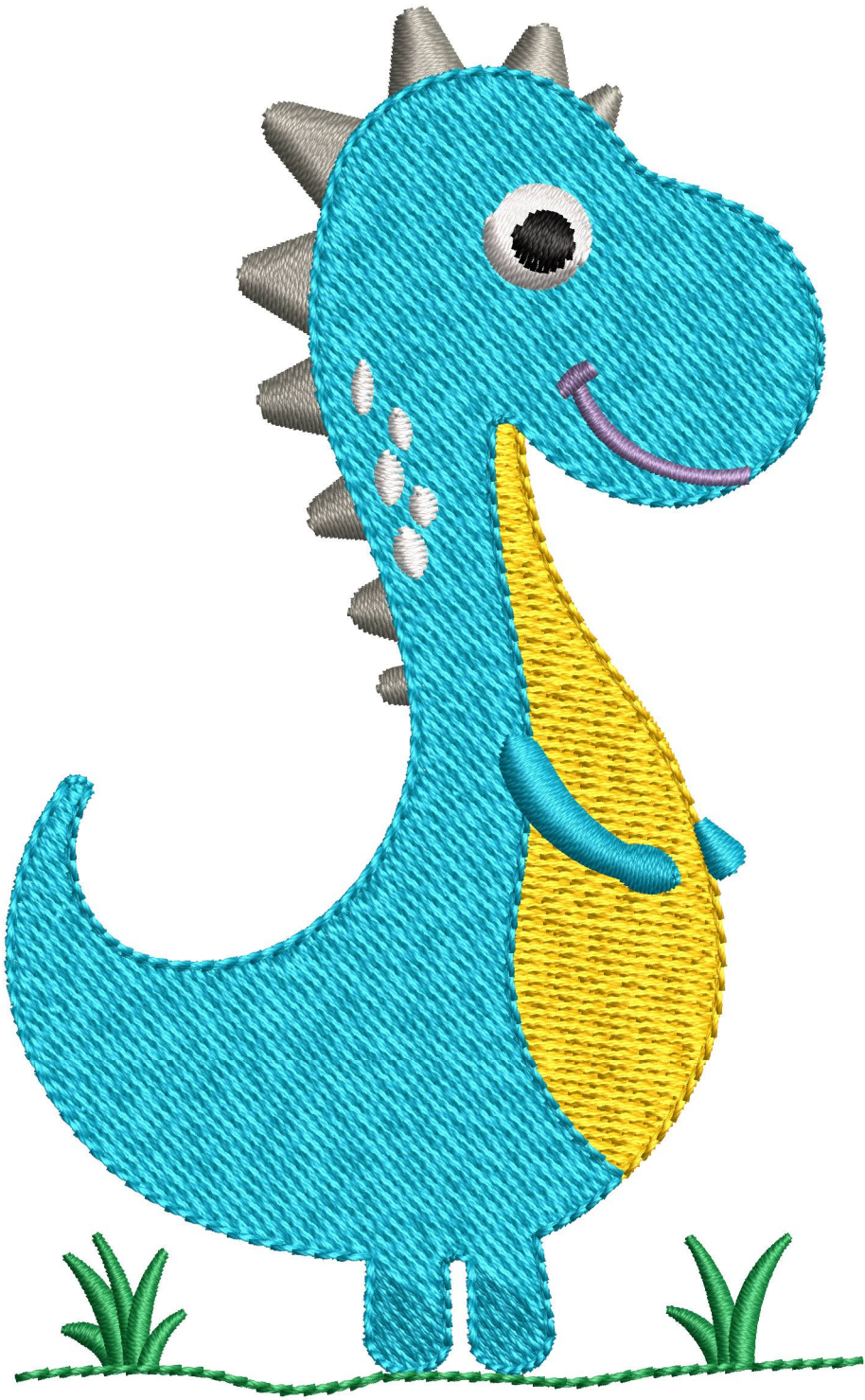
DRAGON A 4X4

Design: **Dragon A 4x4**

Title:

Stitches: 7,864
Height: 95.2 mm
Width: 58.8 mm
Colors: 7
Colorway: Colorway 1
Zoom: 2.03

z digitizing
support@zdigitizing.com
+1 (213) 788-6748



Machine format: Tajima
Color changes: 6
Stops: 7
Trims: 11
Left: 29.5 mm
Right: 29.3 mm
Up: 47.5 mm
Down: 47.7 mm
EndX: 0.0 mm
EndY: 0.0 mm
Area: 5600.3 mm²
Max stitch: 7.8 mm
Min stitch: 0.3 mm
Max jump: 7.0 mm

Stop Sequence:

#	N#	Color	St.	Code	Name	Chart
1.	5	Grey	461	1463		Madeira Classic 40
2.	2	Yellow	1,862	1068	Canary	Madeira Classic 40
3.	3	Blue	6,876	1095	Larimar	Madeira Classic 40
4.	6	White	7,068	1003	Cream White	Madeira Classic 40
5.	4	Black	7,102	1000	Black	Madeira Classic 40
6.	7	Purple	7,234	1032	Velvet Violet	Madeira Classic 40
7.	1	Green	7,862	1051	Bell Pepper	Madeira Classic 40

Color Film

Wilcom EmbroideryStudio - Designing

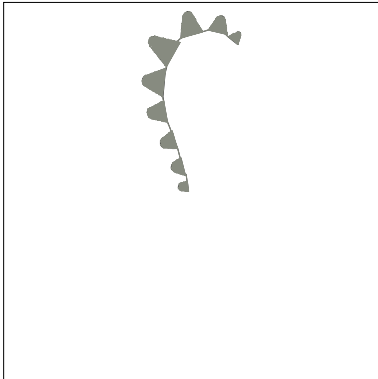
DRAGON A 4X4

Design: **Dragon A 4x4**

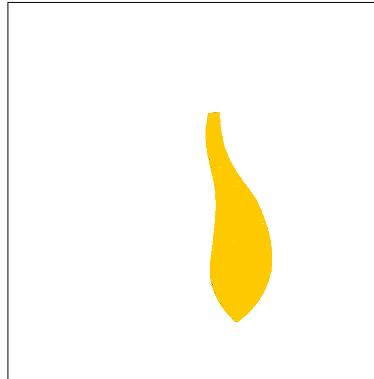
Title:

Stitches: 7,864
Height: 95.2 mm
Width: 58.8 mm
Colors: 7
Colorway: Colorway 1
Zoom: 0.50

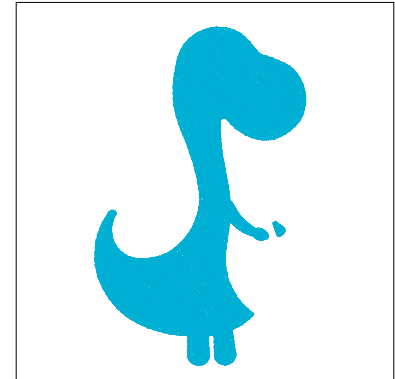
 **digitizing**
support@zdigitizing.com
+1 (213) 788-6748



Stop #: 1
Element:
Code: 1463
Name:
Chart: Madeira Classic 40
Stitches: 461
Thread used: 3.01m



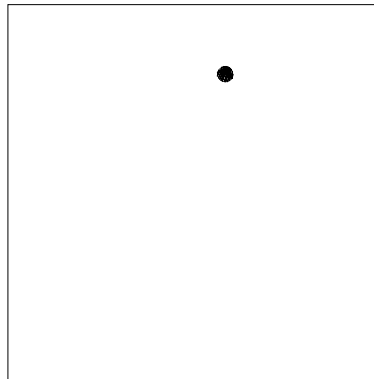
Stop #: 2
Element:
Code: 1068
Name: Canary
Chart: Madeira Classic 40
Stitches: 1,401
Thread used: 8.17m



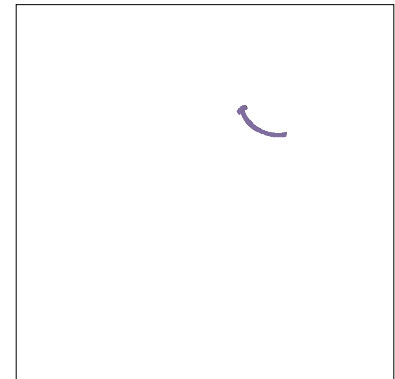
Stop #: 3
Element:
Code: 1095
Name: Larimar
Chart: Madeira Classic 40
Stitches: 5,014
Thread used: 30.36m



Stop #: 4
Element:
Code: 1003
Name: Cream White
Chart: Madeira Classic 40
Stitches: 192
Thread used: 1.13m



Stop #: 5
Element:
Code: 1000
Name: Black
Chart: Madeira Classic 40
Stitches: 34
Thread used: 0.18m



Stop #: 6
Element:
Code: 1032
Name: Velvet Violet
Chart: Madeira Classic 40
Stitches: 132
Thread used: 0.48m

Color Film

Wilcom EmbroideryStudio - Designing

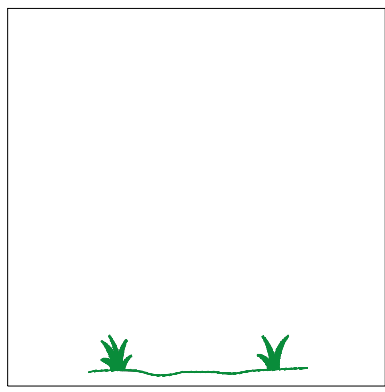
DRAGON A 4X4

Design: **Dragon A 4x4**

Title:

Stitches: 7,864
Height: 95.2 mm
Width: 58.8 mm
Colors: 7
Colorway: Colorway 1
Zoom: 0.50


support@zdigitizing.com
+1 (213) 788-6748



Stop #: 7
Element:
Code: 1051
Name: Bell Pepper
Chart: Madeira Classic 40
Stitches: 628
Thread used: 2.49m