

Production Worksheet

Wilcom EmbroideryStudio - Designing

GIRL B 5X5

Design: **Girl B 5x5**

Title:

Stitches: 2,970
Height: 127.4 mm
Width: 58.6 mm
Colors: 1
Colorway: Colorway 1
Zoom: 1.87

z digitizing
support@zdigitizing.com
+1 (213) 788-6748



Machine format: Tajima
Color changes: 0
Stops: 1
Trims: 11
Left: 29.3 mm
Right: 29.3 mm
Up: 63.7 mm
Down: 63.7 mm
EndX: 0.0 mm
EndY: 0.0 mm
Area: 7468.6 mm²
Max stitch: 6.8 mm
Min stitch: 0.3 mm
Max jump: 6.8 mm

Stop Sequence:

| # | N# | Color | St. | Code | Name | Chart |
|----|----|-------|-------|------|-------|--------------------|
| 1. | 1 | █ | 2,968 | 1000 | Black | Madeira Classic 40 |

Color Film

Wilcom EmbroideryStudio - Designing

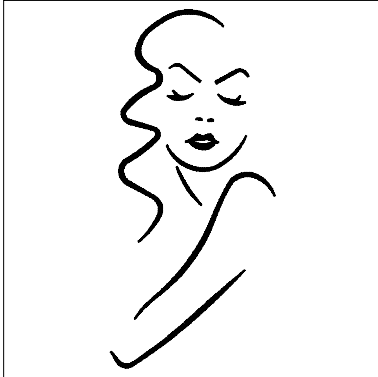
GIRL B 5X5

Design: **Girl B 5x5**

Title:

Stitches: 2,970
Height: 127.4 mm
Width: 58.6 mm
Colors: 1
Colorway: Colorway 1
Zoom: 0.37

z digitizing
support@zdigitizing.com
+1 (213) 788-6748



Stop #: 1
Element:
Code: 1000
Name: Black
Chart: Madeira Classic 40
Stitches: 2,968
Thread used: 12.21m