

Production Worksheet

Wilcom EmbroideryStudio - Designing

GIRL B 6X6

Design: **Girl B 6x6**

Title:

Stitches: 3,510

Height: 152.4 mm

Width: 70.1 mm

Colors: 1

Colorway: Colorway 1

Zoom: 1.57

z digitizing
support@zdigitizing.com
+1 (213) 788-6748



Machine format: Tajima

Color changes: 0

Stops: 1

Trims: 12

Left: 35.1 mm

Right: 35.1 mm

Up: 76.2 mm

Down: 76.2 mm

EndX: 0.0 mm

EndY: 0.0 mm

Area: 10685.5 mm²

Max stitch: 7.0 mm

Min stitch: 0.3 mm

Max jump: 7.0 mm

Stop Sequence:

#	N#	Color	St.	Code	Name	Chart
---	----	-------	-----	------	------	-------

1.	1	█	3,508	1000	Black	Madeira Classic 40
----	---	---	-------	------	-------	--------------------

Color Film

Wilcom EmbroideryStudio - Designing

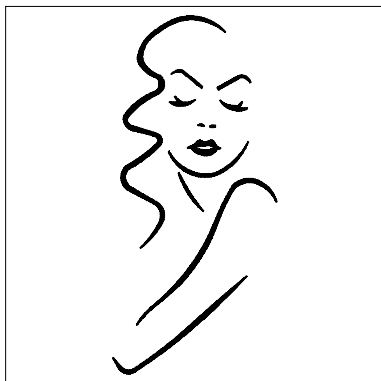
GIRL B 6X6

Design: **Girl B 6x6**

Title:

Stitches: 3,510
Height: 152.4 mm
Width: 70.1 mm
Colors: 1
Colorway: Colorway 1
Zoom: 0.31

z digitizing
support@zdigitizing.com
+1 (213) 788-6748



Stop #: 1

Element:

Code: 1000

Name: Black

Chart: Madeira Classic 40

Stitches: 3,508

Thread used: 15.40m