

Production Worksheet

Wilcom EmbroideryStudio - Designing

LADY FACE 5X5

Design: **Lady Face 5x5**

Title:

Stitches: 5,552
Height: 127.2 mm
Width: 54.7 mm
Colors: 1
Colorway: Colorway 1
Zoom: 1.87

z digitizing
support@zdigitizing.com
+1 (213) 788-6748



Machine format: Tajima
Color changes: 0
Stops: 1
Trims: 1
Left: 27.3 mm
Right: 27.4 mm
Up: 63.7 mm
Down: 63.5 mm
EndX: 0.0 mm
EndY: 0.0 mm
Area: 6955.2 mm²
Max stitch: 6.0 mm
Min stitch: 0.3 mm
Max jump: 7.0 mm

Stop Sequence:

#	N#	Color	St.	Code	Name	Chart
1.	1	■	5,550	1000	Black	Madeira Classic 40

Color Film

Wilcom EmbroideryStudio - Designing

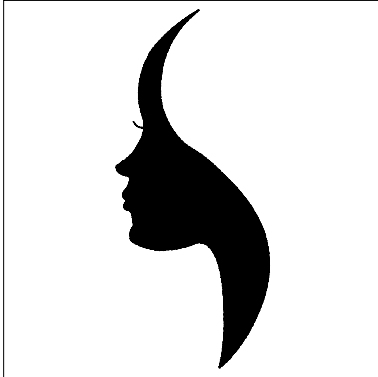
LADY FACE 5X5

Design: **Lady Face 5x5**

Title:

Stitches: 5,552
Height: 127.2 mm
Width: 54.7 mm
Colors: 1
Colorway: Colorway 1
Zoom: 0.37

z digitizing
support@zdigitizing.com
+1 (213) 788-6748



Stop #: 1

Element:

Code: 1000

Name: Black

Chart: Madeira Classic 40

Stitches: 5,550

Thread used: 34.13m