

Production Worksheet

Wilcom EmbroideryStudio - Designing

RAINBOW HORSE 4X4

Design: **Rainbow horse 4x4**



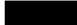
Title:

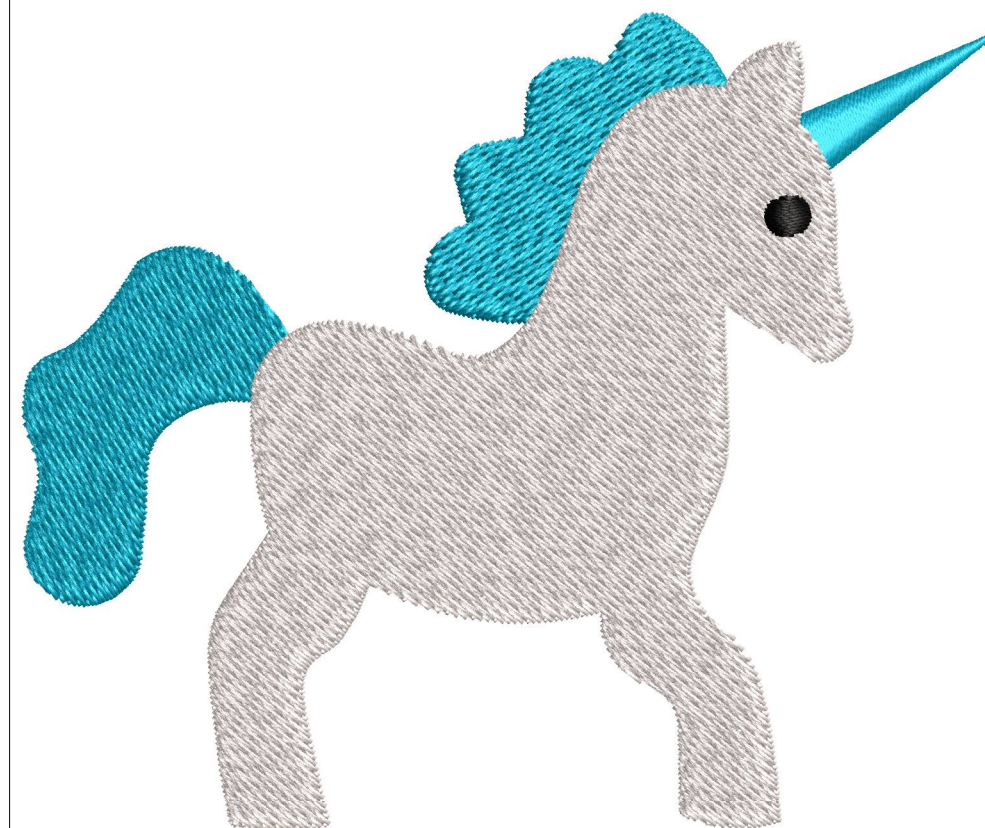
Stitches: 7,326
Height: 80.6 mm
Width: 95.2 mm
Colors: 3
Colorway: Colorway 1
Zoom: 1.34

z digitizing
support@zdigitizing.com
+1 (213) 788-6748

Machine format: Tajima
Color changes: 2
Stops: 3
Trims: 3
Left: 47.6 mm
Right: 47.6 mm
Up: 40.3 mm
Down: 40.3 mm
EndX: 0.0 mm
EndY: 0.0 mm
Area: 7677.3 mm²
Max stitch: 6.6 mm
Min stitch: 0.3 mm
Max jump: 6.8 mm

Stop Sequence:

#	N#	Color	St.	Code	Name	Chart
1.	1		2,441	1095	Larimar	Madeira Classic 40
2.	3		7,280	1003	White	Madeira Classic 40
3.	2		7,324	1000	Black	Madeira Classic 40



Color Film

Wilcom EmbroideryStudio - Designing

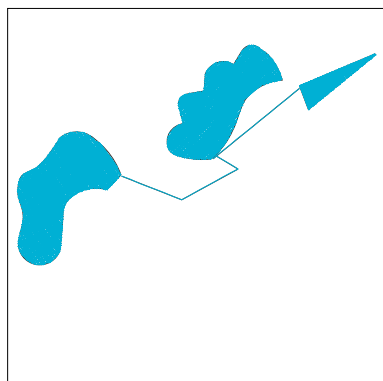
RAINBOW HORSE 4X4

Design: **Rainbow horse 4x4**

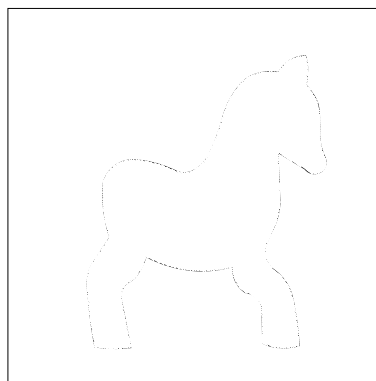
Title:

Stitches: 7,326
Height: 80.6 mm
Width: 95.2 mm
Colors: 3
Colorway: Colorway 1
Zoom: 0.50

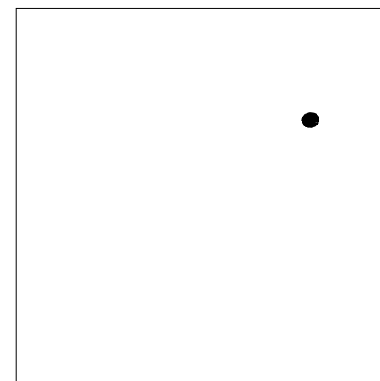

support@zdigitizing.com
+1 (213) 788-6748



Stop #: 1
Element:
Code: 1095
Name: Larimar
Chart: Madeira Classic 40
Stitches: 2,441
Thread used: 14.95m



Stop #: 2
Element:
Code: 1003
Name: White
Chart: Madeira Classic 40
Stitches: 4,839
Thread used: 31.17m



Stop #: 3
Element:
Code: 1000
Name: Black
Chart: Madeira Classic 40
Stitches: 44
Thread used: 0.23m