

**Production Worksheet**

Wilcom EmbroideryStudio - Designing

**\*PIGEON A 5X5\***

Design: **pigeon A 5x5**



Title:

Stitches: 5,503  
Height: 109.2 mm  
Width: 127.2 mm  
Colors: 2  
Colorway: Colorway 1  
Zoom: 0.84

**z digitizing**  
support@zdigitizing.com  
**+1 (213) 788-6748**

Machine format: Tajima  
Color changes: 1  
Stops: 2  
Trims: 15  
Left: 63.6 mm  
Right: 63.6 mm  
Up: 54.6 mm  
Down: 54.6 mm  
EndX: 0.0 mm  
EndY: 0.0 mm  
Area 13897.2 mm<sup>2</sup>  
Max stitch: 6.8 mm  
Min stitch: 0.3 mm  
Max jump: 6.8 mm

Stop Sequence:

#	N#	Color	St.	Code	Name	Chart
1.	1		4,869	1295	Cyan	Madeira Classic 40
2.	2		5,501	1196	Medium Camo Green	Madeira Classic 40



# Color Film

Wilcom EmbroideryStudio - Designing

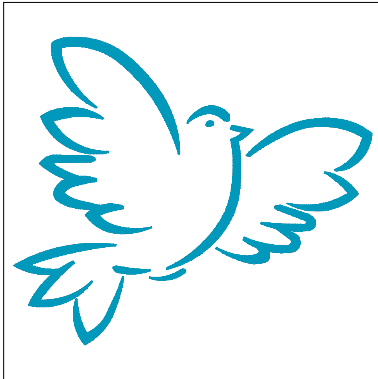
## \*PIGEON A 5X5\*

Design: **pigeon A 5x5**

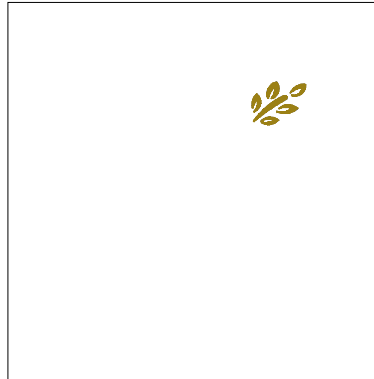
Title:

Stitches: 5,503  
Height: 109.2 mm  
Width: 127.2 mm  
Colors: 2  
Colorway: Colorway 1  
Zoom: 0.37

  
support@zdigitizing.com  
+1 (213) 788-6748



Stop #: 1  
Element:  
Code: 1295  
Name: Cyan  
Chart: Madeira Classic 40  
Stitches: 4,869  
Thread used: 26.14m



Stop #: 2  
Element:  
Code: 1196  
Name: Medium Camo Green  
Chart: Madeira Classic 40  
Stitches: 632  
Thread used: 2.35m