

Production Worksheet

Wilcom EmbroideryStudio - Designing

PIGEON A 6X6

Design: **pigeon A 6x6**



Title:

Stitches: 6,510
Height: 130.8 mm
Width: 152.2 mm
Colors: 2
Colorway: Colorway 1
Zoom: 0.71

z digitizing
support@zdigitizing.com
+1 (213) 788-6748

Machine format: Tajima
Color changes: 1
Stops: 2
Trims: 15
Left: 76.1 mm
Right: 76.1 mm
Up: 65.4 mm
Down: 65.4 mm
EndX: 0.0 mm
EndY: 0.0 mm
Area: 19905.5 mm²
Max stitch: 7.2 mm
Min stitch: 0.2 mm
Max jump: 6.9 mm

Stop Sequence:

#	N#	Color	St.	Code	Name	Chart
1.	1		5,775	1295	Cyan	Madeira Classic 40
2.	2		6,508	1196	Medium Camo Green	Madeira Classic 40



Color Film

Wilcom EmbroideryStudio - Designing

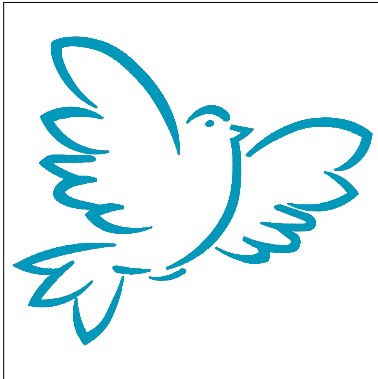
PIGEON A 6X6

Design: **pigeon A 6x6**

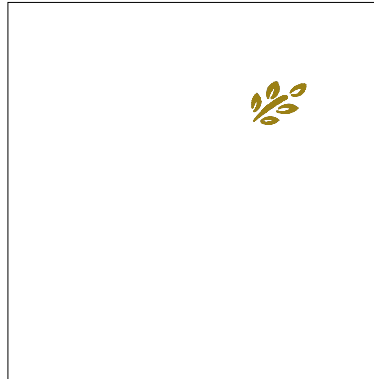
Title:

Stitches: 6,510
Height: 130.8 mm
Width: 152.2 mm
Colors: 2
Colorway: Colorway 1
Zoom: 0.31

 **digitizing**
support@zdigitizing.com
+1 (213) 788-6748



Stop #: 1
Element:
Code: 1295
Name: Cyan
Chart: Madeira Classic 40
Stitches: 5,775
Thread used: 34.05m



Stop #: 2
Element:
Code: 1196
Name: Medium Camo Green
Chart: Madeira Classic 40
Stitches: 733
Thread used: 2.92m