

Production Worksheet

Wilcom EmbroideryStudio - Designing

CARTOON FACE 3X3

Design: **Cartoon Face 3x3**

Title:

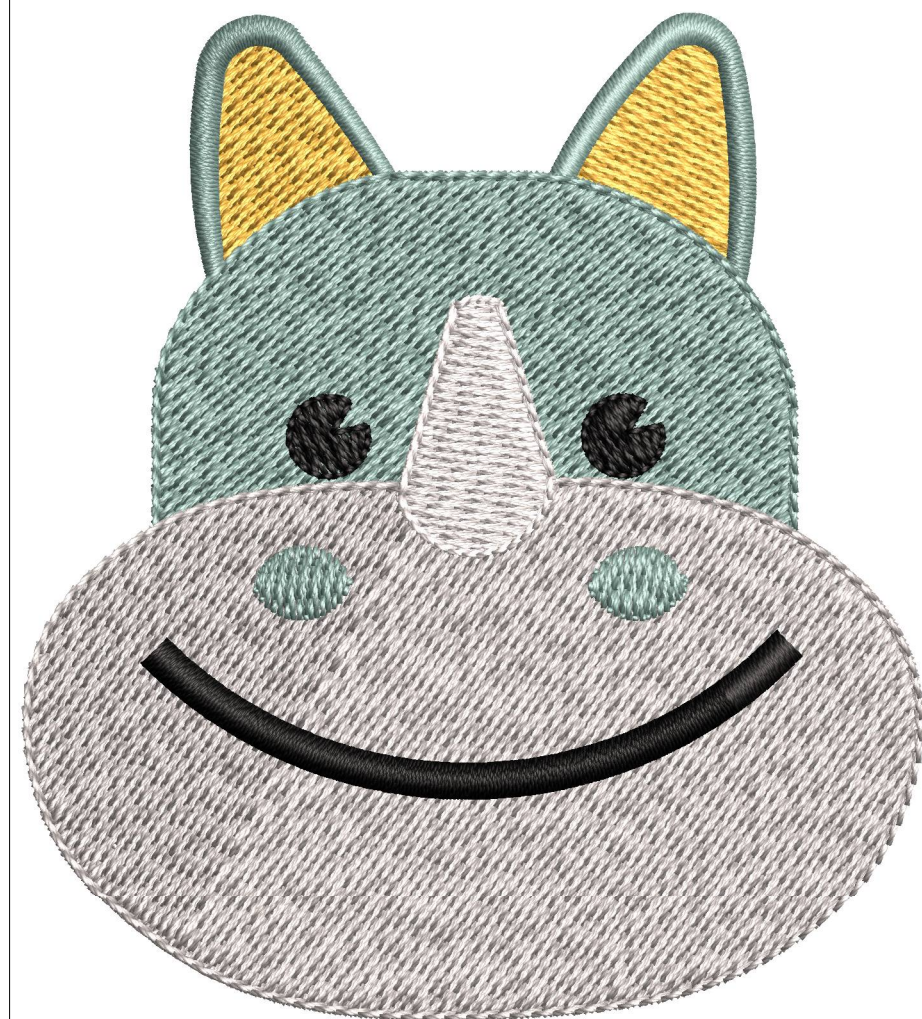
Stitches: 10,069
Height: 76.7 mm
Width: 68.3 mm
Colors: 5
Colorway: Colorway 1
Zoom: 1.74

z digitizing
support@zdigitizing.com
+1 (213) 788-6748

Machine format: Tajima
Color changes: 5
Stops: 6
Trims: 9
Left: 34.1 mm
Right: 34.1 mm
Up: 38.3 mm
Down: 38.3 mm
EndX: 0.0 mm
EndY: 0.0 mm
Area: 5235.1 mm²
Max stitch: 10.5 mm
Min stitch: 0.3 mm
Max jump: 6.5 mm

Stop Sequence:

#	N#	Color	St.	Code	Name	Chart
1.	5		932	1171	Lemon Drop	Madeira Classic 40
2.	1		3,930	1227	Mint Jubilee	Madeira Classic 40
3.	2		8,639	1447		Madeira Classic 40
4.	4		9,158	1001	White	Madeira Classic 40
5.	3		9,897	1000	Black	Madeira Classic 40
6.	1		10,067	1227	Mint Jubilee	Madeira Classic 40



Color Film

Wilcom EmbroideryStudio - Designing

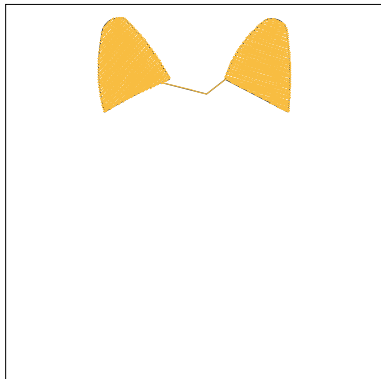
CARTOON FACE 3X3

Design: **Cartoon Face 3x3**

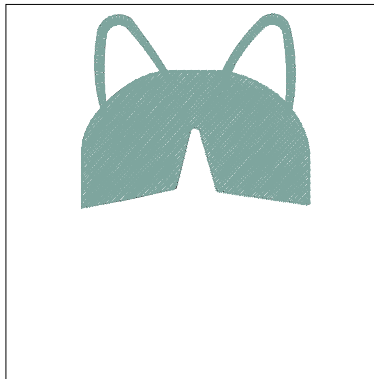
Title:

Stitches: 10,069
Height: 76.7 mm
Width: 68.3 mm
Colors: 5
Colorway: Colorway 1
Zoom: 0.62

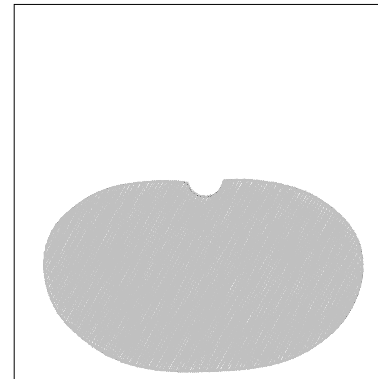
z digitizing
support@zdigitizing.com
+1 (213) 788-6748



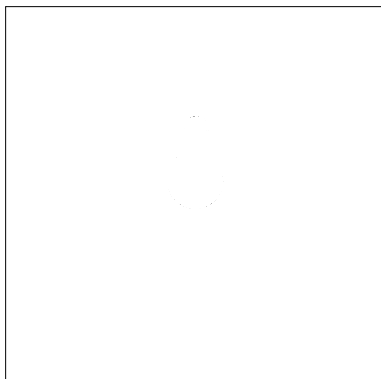
Stop #: 1
Element:
Code: 1171
Name: Lemon Drop
Chart: Madeira Classic 40
Stitches: 932
Thread used: 5.40m



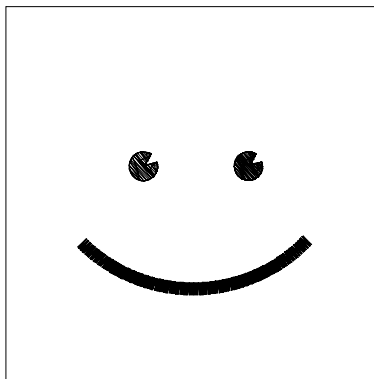
Stop #: 2
Element:
Code: 1227
Name: Mint Jubilee
Chart: Madeira Classic 40
Stitches: 2,998
Thread used: 17.97m



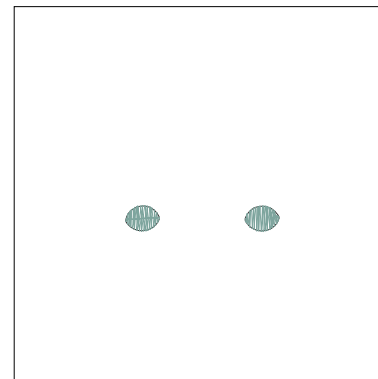
Stop #: 3
Element:
Code: 1447
Name:
Chart: Madeira Classic 40
Stitches: 4,709
Thread used: 31.43m



Stop #: 4
Element:
Code: 1001
Name: White
Chart: Madeira Classic 40
Stitches: 519
Thread used: 2.78m



Stop #: 5
Element:
Code: 1000
Name: Black
Chart: Madeira Classic 40
Stitches: 739
Thread used: 3.57m



Stop #: 6
Element:
Code: 1227
Name: Mint Jubilee
Chart: Madeira Classic 40
Stitches: 170
Thread used: 0.75m