

Production Worksheet

Wilcom EmbroideryStudio - Designing

NATIONAL FREEDOM DAY F 5X5

Design: **National Freedom Day F 5x5**

Title:

Stitches: 20,521
Height: 127.0 mm
Width: 116.4 mm
Colors: 4
Colorway: Colorway 1
Zoom: 1.10

z digitizing
support@zdigitizing.com
+1 (213) 788-6748

Machine format: Tajima
Color changes: 5
Stops: 6
Trims: 85
Left: 58.2 mm
Right: 58.2 mm
Up: 63.5 mm
Down: 63.5 mm
EndX: 0.0 mm
EndY: 0.0 mm
Area: 14787.1 mm²
Max stitch: 6.9 mm
Min stitch: 0.2 mm
Max jump: 6.9 mm

Stop Sequence:

#	N#	Color	St.	Code	Name	Chart
1.	3	Black	1,961	1000	Black	Madeira Classic 40
2.	2	Red	6,837	1037	Red	Madeira Classic 40
3.	4	White	9,363	1001	White	Madeira Classic 40
4.	1	Dark Blue	12,449	1467	Dark Blue	Madeira Classic 40
5.	4	White	16,479	1001	White	Madeira Classic 40
6.	1	Dark Blue	20,519	1467	Dark Blue	Madeira Classic 40



Color Film

Wilcom EmbroideryStudio - Designing

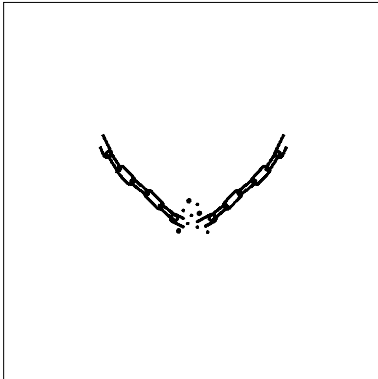
NATIONAL FREEDOM DAY F 5X5

Design: **National Freedom Day F 5x5**

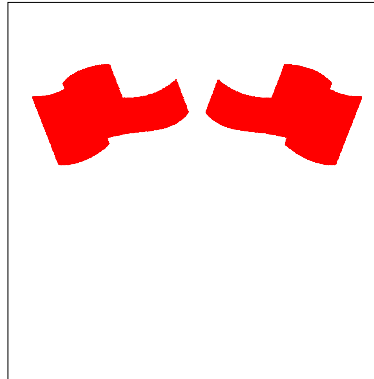
Title:

Stitches: 20,521
Height: 127.0 mm
Width: 116.4 mm
Colors: 4
Colorway: Colorway 1
Zoom: 0.37

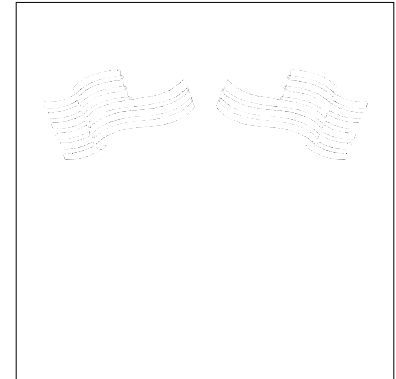
z digitizing
support@zdigitizing.com
+1 (213) 788-6748



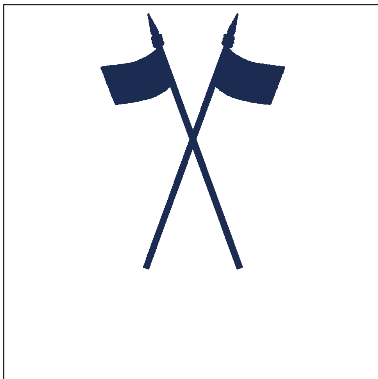
Stop #: 1
Element:
Code: 1000
Name: Black
Chart: Madeira Classic 40
Stitches: 1,961
Thread used: 6.39m



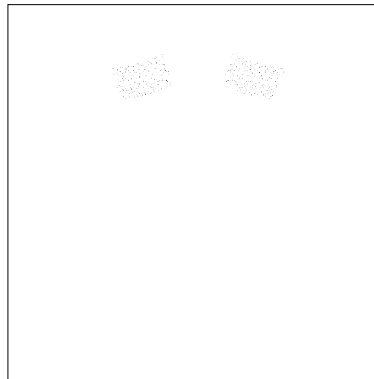
Stop #: 2
Element:
Code: 1037
Name: Red
Chart: Madeira Classic 40
Stitches: 4,876
Thread used: 30.17m



Stop #: 3
Element:
Code: 1001
Name: White
Chart: Madeira Classic 40
Stitches: 2,526
Thread used: 12.68m



Stop #: 4
Element:
Code: 1467
Name:
Chart: Madeira Classic 40
Stitches: 3,086
Thread used: 16.18m



Stop #: 5
Element:
Code: 1001
Name: White
Chart: Madeira Classic 40
Stitches: 4,030
Thread used: 11.31m



Stop #: 6
Element:
Code: 1467
Name:
Chart: Madeira Classic 40
Stitches: 4,040
Thread used: 18.95m