

Production Worksheet

Wilcom EmbroideryStudio - Designing

NATIONAL FREEDOM DAY F 6X6

Design: **National Freedom Day F 6x6**

Title:

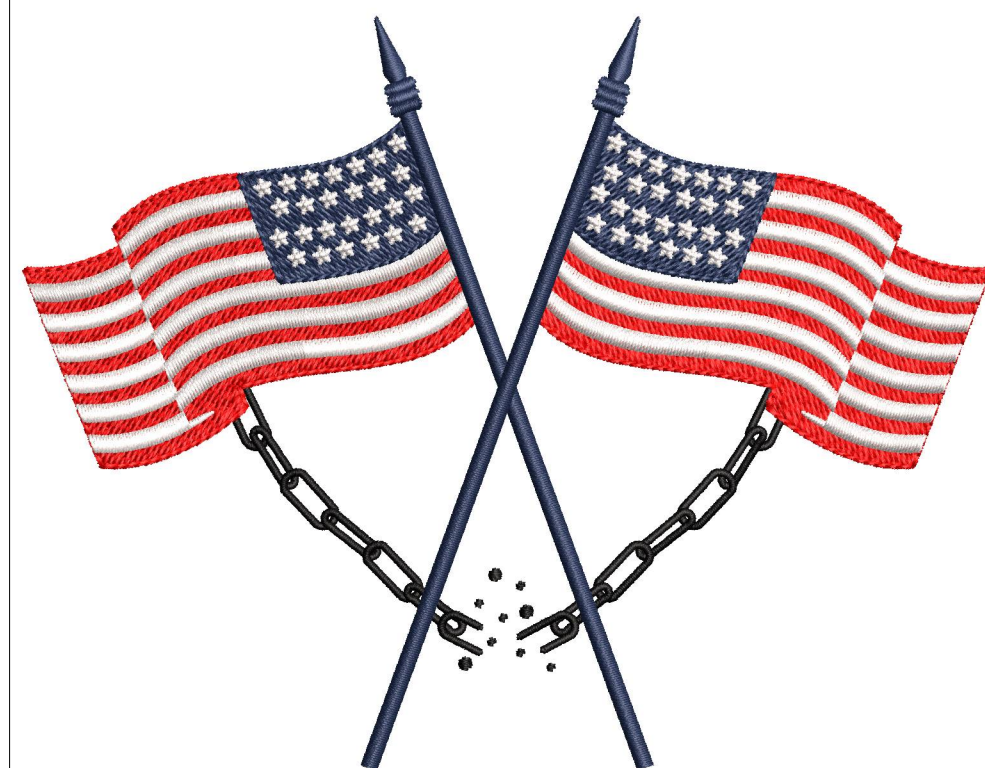
Stitches: 24,565
Height: 152.0 mm
Width: 139.3 mm
Colors: 4
Colorway: Colorway 1
Zoom: 0.92

z digitizing
support@zdigitizing.com
+1 (213) 788-6748

Machine format: Tajima
Color changes: 5
Stops: 6
Trims: 87
Left: 69.6 mm
Right: 69.6 mm
Up: 76.0 mm
Down: 76.0 mm
EndX: 0.0 mm
EndY: 0.0 mm
Area: 21167.8 mm²
Max stitch: 6.8 mm
Min stitch: 0.2 mm
Max jump: 6.9 mm

Stop Sequence:

#	N#	Color	St.	Code	Name	Chart
1.	3	Black	2,306	1000	Black	Madeira Classic 40
2.	2	Red	8,899	1037	Red	Madeira Classic 40
3.	4	White	11,905	1001	White	Madeira Classic 40
4.	1	Dark Blue	15,787	1467		Madeira Classic 40
5.	4	White	19,843	1001	White	Madeira Classic 40
6.	1	Dark Blue	24,563	1467		Madeira Classic 40



**NATIONAL
★ FREEDOM ★
DAY**

Color Film

Wilcom EmbroideryStudio - Designing

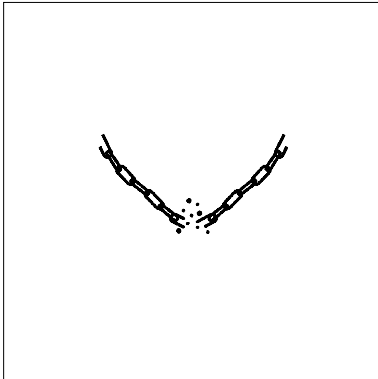
NATIONAL FREEDOM DAY F 6X6

Design: **National Freedom Day F 6x6**

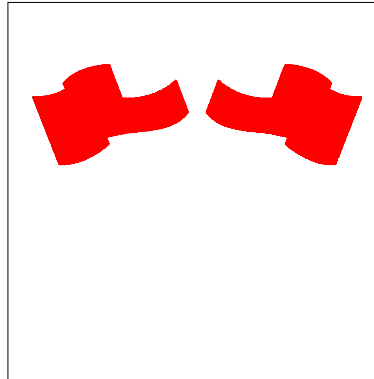
Title:

Stitches: 24,565
Height: 152.0 mm
Width: 139.3 mm
Colors: 4
Colorway: Colorway 1
Zoom: 0.31

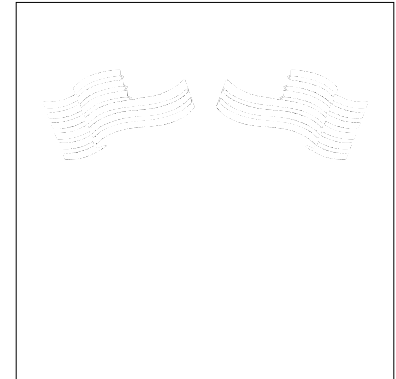

support@zdigitizing.com
+1 (213) 788-6748



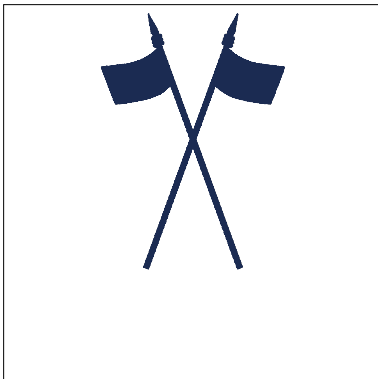
Stop #: 1
Element:
Code: 1000
Name: Black
Chart: Madeira Classic 40
Stitches: 2,306
Thread used: 7.88m



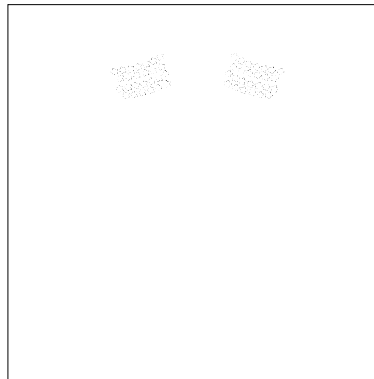
Stop #: 2
Element:
Code: 1037
Name: Red
Chart: Madeira Classic 40
Stitches: 6,593
Thread used: 41.89m



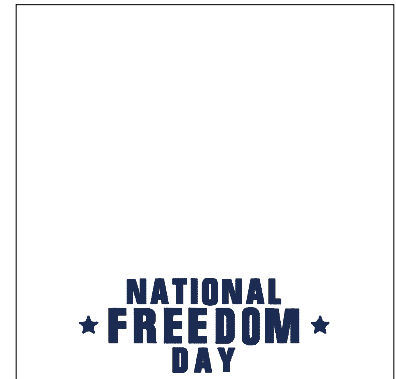
Stop #: 3
Element:
Code: 1001
Name: White
Chart: Madeira Classic 40
Stitches: 3,006
Thread used: 16.52m



Stop #: 4
Element:
Code: 1467
Name:
Chart: Madeira Classic 40
Stitches: 3,882
Thread used: 21.63m



Stop #: 5
Element:
Code: 1001
Name: White
Chart: Madeira Classic 40
Stitches: 4,056
Thread used: 11.72m



Stop #: 6
Element:
Code: 1467
Name:
Chart: Madeira Classic 40
Stitches: 4,720
Thread used: 24.27m