

Production Worksheet

Wilcom EmbroideryStudio - Designing

LOVE EMOJI 3X3

Design: **Love Emoji 3x3**




Title:

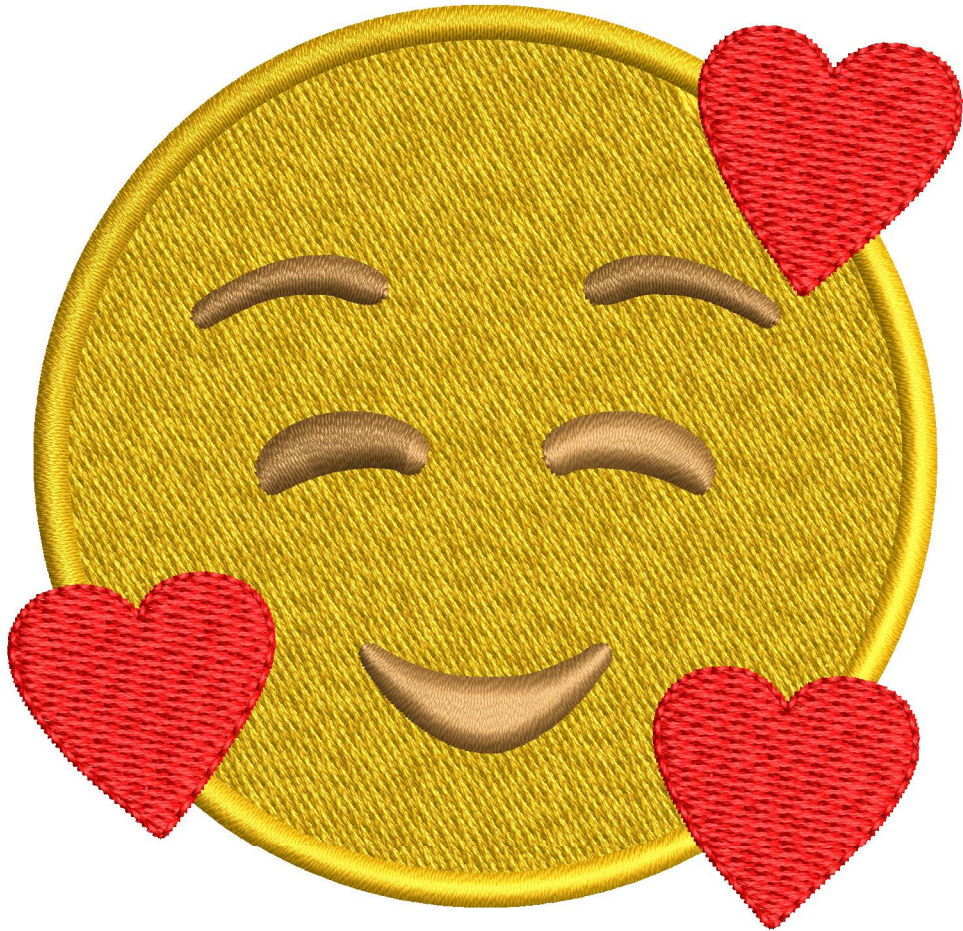
Stitches: 11,821
Height: 74.1 mm
Width: 76.6 mm
Colors: 3
Colorway: Colorway 1
Zoom: 1.65

z digitizing
support@zdigitizing.com

Machine format: Tajima
Color changes: 2
Stops: 3
Trims: 9
Left: 38.3 mm
Right: 38.3 mm
Up: 37.1 mm
Down: 37.1 mm
EndX: 0.0 mm
EndY: 0.0 mm
Area: 5681.9 mm²
Max stitch: 7.4 mm
Min stitch: 0.2 mm
Max jump: 6.8 mm

Stop Sequence:

#	N#	Color	St.	Code	Name	Chart
1.	1		8,344	1068	Canary	Madeira Classic 40
2.	3		9,278	1491		Madeira Classic 40
3.	2		11,819	1037	Red	Madeira Classic 40



Color Film

Wilcom EmbroideryStudio - Designing

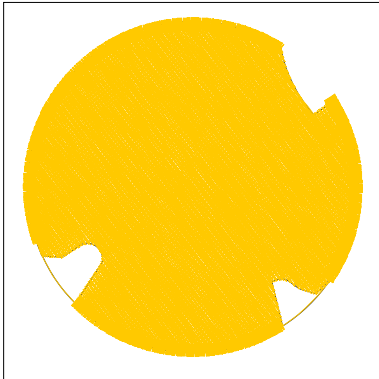
LOVE EMOJI 3X3

Design: **Love Emoji 3x3**

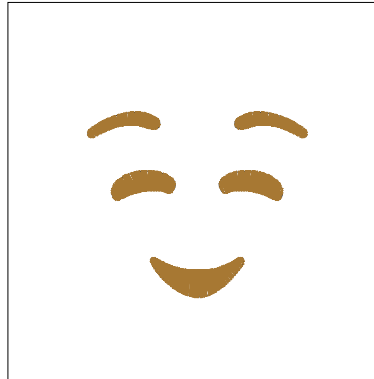
Title:

Stitches: 11,821
Height: 74.1 mm
Width: 76.6 mm
Colors: 3
Colorway: Colorway 1
Zoom: 0.62

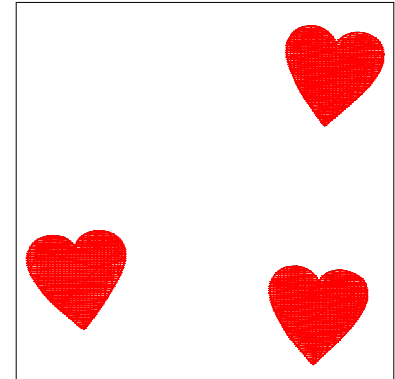

support@zdigitizing.com



Stop #: 1
Element:
Code: 1068
Name: Canary
Chart: Madeira Classic 40
Stitches: 8,344
Thread used: 55.99m



Stop #: 2
Element:
Code: 1491
Name:
Chart: Madeira Classic 40
Stitches: 934
Thread used: 5.83m



Stop #: 3
Element:
Code: 1037
Name: Red
Chart: Madeira Classic 40
Stitches: 2,541
Thread used: 14.26m